

RADIO DIAL

REGISTERED

ESTABLISHED 1925
CINCINNATI, OHIO
PUBLISHED WEEKLY
MAY 5, 1932

Volume 1, No. 50

WEEK ENDING MAY 5, 1932

Price 5c

They Are Cast in WLW Murder Trial



—Photographs by Newman Gilmore Studios, Cincinnati.

(1) Mrs. William Heald; (2) Mrs. Sophia Hamant; (3) Mrs. William Brady; (4) William Ramsey; (5) Reginald Barnard.

Vivienne's fate is in your hands. You and other WLW listeners are the jury (and potential prize-winners) in "The Trial of Vivienne Ware," WLW's first radio murder case, now being broadcast each Tuesday, Thursday and Saturday at 10 p. m. Edmund D. Coblentz, New York newspaperman, is said to have conceived the idea for a radio murder trial upon reading a Copenhagen cable telling of the broadcast of a real murder hearing. The above photos show persons cast in the WLW case. The sponsor, Standard Oil Company of Ohio, will award prizes for the best verdicts by listeners.

Pogue's Birthday Party To Recall Cincinnati of Old

Cincinnati history from Civil War days to 1932 will be traced in the H. & S. Pogue Company's 69th anniversary special one-hour program beginning at 10 p. m. Sunday (May 1) over WKRC. With that will be twinned the history of the Pogue stores since Henry and Samuel Pogue established their business on the banks of the Ohio River. Music of today and yesterday will be heard. Robert W. Pogue, president of the company, will speak. Howard Harford, WKRC musical director, will lead the special orchestra.

NEW BOY ON AIR

"Hep Lulliver," new juvenile drama in the manner of Booth Tarkington's "Penrod and Sam," will be heard each Saturday at 5 p. m., beginning April 30 over an NBC-WJZ chain.

In This Issue

SKIPPY WINCHELL

BOB NEWHALL

Pons, Gigli and Schumann-Heink Starred on WSAI

Beniamino Gigli, Lily Pons, Mme. Schumann-Heink and John Charles Thomas are among the 12 concert and operatic artists who will present a Musicians Emergency Aid one-hour program Sunday (May 1) at 4 p. m. over WSAI (NBC-WEAF).

This is in place of the regular General Electric Circle program. Walter Damrosch will be master of ceremonies and will lead the National Symphony Orchestra.

Other participants are George Cehanovsky, baritone; Aida Dominelli, soprano; Giovanni Martinelli, tenor; Grace Moore, soprano; Carmela Ponselle, mezzo soprano; Gladys Swarthout, soprano; Theodore Webb, baritone, and Reinald Werrenrath, baritone.

PRINCE ON AIR

Prince George will be the third member of the English Royal family to be heard in the United States and Canada when an address at the annual dinner of the Royal Academy in London is broadcast through the Columbia network from 2:10 to 3 p. m., Saturday (April 30).

O. HENRY ON AIR

O. Henry's famous short stories will be dramatized on the air each Wednesday at 8 p. m., beginning May 4th, over WLW (NBC-WJZ) by G. Washington Coffee, producers of Sherlock Holmes and Rudyard Kipling radio dramas. "Mammon and the Archer" will be first. Meanwhile, Sherlock Holmes adventures will continue each Thursday at 8:30 p. m. over WSAI (NBC-WEAF).

Rudy and Irene in Person at WSAI



Rudy Vallee and Irene Bordoni

Rudy Vallee and Irene Bordoni will appear in person at WSAI in Cincinnati Thursday (May 5) at 7 p. m. for the Fleischmann Hour over NBC-WEAF. They will be here because Rudy is traveling with George White's "Scandals" and that show is playing at the Taft Theater this week. Irene, Fleischmann Hour guest-artist, is making each city on the "Scandals" route.

KAY STARS

A new weekly series of broadcasts dedicated to the ballads of yesteryear, and starring Kay Donna, 18-year-old contralto is heard over WSAI (NBC-WEAF) on Monday at 9:30 p. m. The program is "Do You Remember?" and originates at WTAM (Cleveland).

One of the Roses



LOUISE GROODY

Louise Groody, petite star of "No, No, Nanette," is the latest of legitimate stage figures to turn to radio. She will sing the role of "Marcheta" in "Accused of Witchcraft" over WKRC (CBS) Sunday (May 1) at 5:30 p. m. This is the second episode in "Roses and Drums," playlets built about the American home and sponsored by the Union Central Life Insurance Company. Louise has also sparkled in "Hit the Deck," "Good Morning, Dearie" and "Night Boat." Her current show is "A Church Mouse."

'Tis the Old Maestro Himself--In Person

"The next number will be 'Of Thee I Sing.' This is a \$1 song, but we're giving it away tonight."

Thus Ben Bernie told his world over his Blue Ribbon Malt airway last Tuesday in St. Louis.

Saturday, on his arrival in Cincinnati for a week's stand at the RKO Albee, Ben showed us the following follow-up postal card from a feminine fan in Oskaloosa, Kansas:

"Ben Bernie,
"Blue Ribbon Malt,
"St. Louis.
"Dear Sir:

"We heard your program last night. You said you were going to give away the song, 'Of Thee I Sing.' I would like to have the song."

That's how it goes in the radio business.

The postal card was one of 300 messages awaiting Ben on his arrival at the Albee and the Hotel Sinton-St. Nicholas. He tells you frankly that the letters are what make it all worth while—his guide, philosopher and friend. He averages 1,000 to 1,500 letters daily and three secretaries handle the mail.

"I read all the knocks," says Ben. If you're a gentleman, he'll receive you informally, as in b. v. d.'s. Not all the returns are in, but off-hand we'd say they (the b. v. d.'s, not the returns) are pink, with a yearning for red.

We have two classifications for those who go suddenly to Rome:

- (1) Those who take it seriously.
- (2) Those who continue to wear the same hat—size and all.

Ben Bernie is wearing the same hat. He's glad to see you and will spend precious minutes with you, while he could be selling Blue Ribbon Malt.

"The Bernie-Winchell 'fend'?"
"No seriousness there," says Ben. "We are great friends. I'm terribly sorry about Walter's illness and am a little hesitant about 'kidding' him just now. But certain that everyone knows it's in jest."

(Then Ben read aloud a letter from a feminine admirer who offered to "punch Winchell in the eye any time for you, Ben")

"Diversion while in Cincinnati?"
"Golf at Maketewah with three of the boys in the band... stiff four-some."

(The band will soon celebrate its tenth anniversary; half of the "boys" were with Ben at the very start.)

"Friends in Cincinnati?"

WITH THE REDS ON AIR VIA WFBE

WFBE will broadcast Cincinnati Reds' games as follows:

Monday (May 2), 4:15 p. m., at St. Louis.

Tuesday (May 3), 4:15 p. m., at St. Louis.

Wednesday (May 4), 4:15 p. m., Cincinnati at St. Louis.

Thursday (May 5), 2:45 p. m., Cincinnati-Boston, here.

Friday (May 6), 2:45 p. m., Cincinnati-Boston, here.

"Johnny Morgan at the Sinton-St. Nicholas... Gus Arnheim at the Plaza... Pat Harrington at WLW... Pat played in the Bernie band on the Leviathan last summer."

"Ben's love for horses a myth?"
"Quite the contrary. My son, Jason, now at Culver, is one of the few ahead of horses in my affection."

"New contract?"
"Well, I've had several other flattering offers. But the Blue Ribbon Malt folks are wonderful to me. We'll probably renew the contract when it expires this summer and for a similar frequency."

"Where from Cincinnati?"
"To the Palace at Chicago; then a week's rest; then Cleveland, Boston, Washington, and then to the Palace at New York."

"And finally—his choice—radio or stage?"

"Well, the stage was my first love, you know. But there's a nervousness or perspiration accompanying a stage performance that is absent from the microphone."

The radio gets his first vote—and he hopes you're listening.

PENN RELAYS ON AIR

Ted Husing will describe the Penn Relays Friday (April 29) from 2 until 2:15 and from 3:30 until 4:15 p. m. over Columbia.

FANNIE HURST NEXT

Fannie Hurst, author, will be interviewed Wednesday (May 4) over WKRC (CBS) by Allie Lowe Miles in "The Bath Club" at 7 p. m.

Weekly RADIO DIAL

Entered as second-class matter July 29, 1931, at the post office at Cincinnati, Ohio, under the Act of March 3, 1879.

Published every Friday by the Radio Dial Publishing Co., 22 East 12th St., Cincinnati, Ohio. Contents copyrighted.

Six Months for \$1. Single Copies 5 cents

RADIO DIAL brings you latest available programs and news of your favorite stations and artists. All programs listed are correct up to press-time, but are, of course, subject to later changes by networks and local stations.

Vol. I WEEK ENDING MAY 5, 1932 No. 50

NOW IT'S THE ENTERTAINMENT INDUSTRY

The recent election of M. H. Aylesworth, president of NBC, as president also of RKO is something more significant than another of those interlocking management tricks with which one big business bewilders the "man in the street." It is frank and conclusive evidence of the David-and-Jonathan bond that now binds radio to the theater.

'Twas not ever thus.

Readers whose enlistment in the loudspeaker army dates back to the "good old days" can remember a time when any vaudeville or movie star who appeared on a broadcasting program did so at the imminent risk of forfeiting his theatrical contract. Then the theater looked upon radio as its "hated enemy." But everything is different now.

The old feud has been fading for several years. Radio stars have been headlining theater bills and theatrical headliners starring in air shows with increasing frequency. RKO was organized by the same interest, which own NBC. And now with Mr. Aylesworth serving as president of both, the one-time bitter rivals come under unified command.

It is all part of an unfolding pattern, not so much as disturbed by Paramount-Publix's sale, a short time ago, of its half-interest in Columbia. CBS and various theatrical groups also co-operate cordially.

In short, there is no longer a broadcasting industry as opposed to a theatrical industry. There is an entertainment industry, with closely affiliated broadcasting and theatrical branches.

That, of course, is as it should be. The two have enough in common to make the union logical. Still, every happy marriage demands a pretty even score on the matter of give and take. And thus far there is reason for the suspicion that radio has been giving more than it has been receiving.

Frankly, the chief harm of broadcasting for the theater seems to be its usefulness as a "build-up" medium. Numerous vaudeville and film hits could be mentioned whose box-office success can be traced directly—and sometimes solely—to the fact that they were first loudspeaker favorites. On the other hand, comparatively few stage or screen stars have twinkled so brilliantly before the microphone.

Granted, this may be due merely to shortcomings of technique. But the point is that the radio-theater wedding can scarcely be happy if radio continues to be principally an advertiser of its partner. That is neither fair play nor good business. For its own sake, the theater should see that its contribution to radio more nearly pays its debt to the microphone.



"Here it is! My first"

"I believe I owe a great deal to the Newspaper Institute, for without the training you so conscientiously equipped me with I would not now be able to say: 'Here it is—the first one.' I am mailing you, today, a copy of my first novel, 'Hungry Hollow,' published by Dorrance & Company, of Philadelphia."

Dr. Benjamin B. Milnes, 2620 Main St., Buffalo, N. Y.

How do you know you can't write?

Have you ever tried? ... Have you ever attempted even the least bit of training, under competent guidance? Or have you been sitting back, as it is so easy to do, waiting for the day to come some time when you will awaken, all of a sudden, to the discovery, "I am a writer"? If the latter course is the one of your choosing, you probably never will write. Lawyers must be law clerks. Engineers must be draftsmen. We all know that, in our times, the egg does come before the chicken. It is seldom that anyone becomes a writer until he (or she) has been writing for some time. That is why so many authors and writers spring up out of the newspaper business. The day-to-day necessity of writing—of gathering material about which to write—develops their talent, their insight, their background and their confidence as nothing else could.

corrected and constructively criticized. A group of men with 182 years of newspaper experience behind them are responsible for this instruction. Under such sympathetic guidance, you will find that (instead of vainly trying to copy some one else's writing tricks) you are rapidly developing your own distinctive, self-flavored style—undergoing an experience that has a thrill to it and which at the same time develops in you the power to make your feelings articulate. Many people who should be writing become awe-struck by fabulous stories about millionaire authors and therefore give little thought to the \$25, \$50 and \$100 or more that can often be earned for material that takes little time to write—stories, articles on business, fads, travel, sports, recipes, etc.—things that can easily be turned out in leisure hours, and often on the impulse of the moment. Let us help you test your native abilities. Our interesting Writing Attitude Test will do it. It's free—entirely without obligation. Fill in and send coupon.

NEWSPAPER INSTITUTE OF AMERICA 1776 Broadway, New York

Form for writing attitude test with fields for name, address, and phone number.

Learn to write by writing NEWSPAPER Institute training is based on the New York Copy-Desk Method. It starts and keeps you writing in your own home, on your own time. Week by week you receive actual assignments, just as if you were right at work on a great metropolitan daily. Your writing is individually

Ann Howe!



ELSIE HITZ

The latest love of Elsie is Joe Palooka, amiable boob of the prize ring and comic skit hero, now heard each Tuesday and Thursday at 5:45 p. m. over WKRC (CBS) for the H. J. Heinz Company. She is cast as Ann Howe, daughter of Heerz Howe, wealthy cheese-maker.

Damrosch to End Season with 17 Numbers Friday

Walter Damrosch will direct the season's last NBC Music Appreciation program Friday (April 29) at 10 a. m. over WSAI (NBC-WEAF). The 17 numbers were adapted by Damrosch himself to familiarize singers with orchestral masterpieces. First the orchestra will play the themes and then the 16 Singers will repeat the choral versions.

Four Nations Join for University's Birthday Party

Berlin, London, Paris and New York will be heard over WSAI (NBC-WEAF) Sunday (May 1) at 11:30 a. m. in a program celebrating the seventh anniversary of the Hebrew University at Jerusalem and entitled "The Cultural Awakening of the Near East."

The program includes: New York, Dr. A. S. W. Rosenbach and Felix M. Warburg, talks; Armenia and Tokatyan of Metropolitan Opera, London, Sir Herbert Samuel, British Home Secretary, on "The Bridge Between East and West," and James A. de Rothschild on "The Practical Fruits of Idealism." Berlin, Dr. Oscar Wasserman, on "Breaking Down Barriers," and Dr. Thomas Mann, a 1929 Nobel Prize winner, on "The Renaissance of Intellectual Life in the Near East." Paris, Israel Levi, Grand Rabbi, on "The Birthplace of World Religions."

"Show Boat Stars" In Next Ziegfeld Follies of the Air

A half-hour of highlights of one of Florenz Ziegfeld's greatest stage productions, "Show Boat," with several members of the original cast taking part, will be presented during the fifth "Ziegfeld Radio Show," over WKRC (CBS) at 10:30 p. m. Sunday (May 1).

Helen Morgan, "Julie" of the American "Show Boat" company, and Paul Robeson, celebrated Negro singer and actor who took the part of "Joe" in the London company, are two of the "Show Boat" stars who will be heard.

« PROGRAM JOTTINGS »

Choice of the Week's Programs on Local and Out-of-Town Stations

Friday, April 29

With a waltz, a rumba, and a selection of other numbers in varied tempo and rhythm, Leo Reisman will show his versatility as interpreter of popular music on the Pond's program at 8:30 p. m. over WCKY (NBC-WEAF).

Saturday, April 30

What happens to a young man's heart in Spring? Orestes H. Caldwell, editor and former Federal Radio Commissioner, will tell the world at 5:30 p. m. over NBC-WJZ via electronic tubes in Westinghouse cardiograph applied to the heart of the man now being chosen by NBC girls as NBC's most handsome announcer. Caldwell has shown he can broadcast electric currents engendered by moving muscles. This time he will broadcast current resulting from thought of movement.

Sunday, May 1

Murray Horton and his dance band, "Sisters Three" and Jack Curran will harmonize in the Crosley Roamios over WLW at 5:30 p. m. The program includes "My Woman," "Candles in the Sky," "Sing A New Song" and an original orchestral arrangement of "Dinah."

The Four Eton Boys will sing on the Ever-Ready Radio Gaieties with Belle Baker and Jack Denny's orchestra Sunday (April 24) at 8 p. m. over WKRC (CBS). Their numbers will be "Mean Music" and "Ding Dong Daddy from Duma." Jack will present "You Can Make My Life a Bed of Roses," "Gosh Darn," "Paradise" (from "A Woman Commands") and "Sun's In My Heart."

Count Felix von Luckner, "The Sea Devil," will return to the ether at 8:15 p. m. for the first of a series on the Bayuk Stag Party program over WLW (NBC-WJZ).

Monday, May 2

Upton Close, internationally famous author, lecturer, reporter and historian, will be guest-speaker on the National Student Federation program over WKRC (CBS) at 3:30 p. m. The investigating officer for the United States in Shantung during the Japanese invasion of 1916-1919 and one of this country's leading authorities on conditions in the Far East, Close will speak on "What Lies Beyond in the Orient."

George Burns and Grace Allen will continue their comedy, with Guy Lombardo's Royal Canadians providing the tempos, when the Robert Burns Panatela Program is presented over WKRC (CBS) at 9 p. m. This will be Lombardo's last broadcast from New York prior to a three-months tour of the East and Middle West during which time the music will originate at various points.

Tuesday, May 3

Tangee Music... Dreams on WLW at 8 p. m. will include "There's Romance in the Air," "Hello, Sweetheart, Hello," "Night" and "My Lips Want Kisses."

Alex Gray will sing the Creole serenade, "Love Me Tonight," and "Rio Rita," accompanied by Nat

Shilkret's orchestra in the "Music That Satisfies" program over WKRC (CBS) at 9:30 p. m.

President Nicholas Murray Butler of Columbia University and George W. Wickersham will talk at 10 p. m. over Columbia in a program analyzing the Wickersham report. John H. Finley, associate editor of The New York Times, will preside.

Wednesday, May 4

Robert L. Ripley will open a new "Believe It Or Not" series at 6:15 p. m. on the Esso program, to be heard each Wednesday and Friday night at that hour over NBC-WJZ. He is home from a trip through the South Seas and Orient.

Irvin S. Cobb and Grantland Rice will discuss Kentucky Derbies and other horse races at 9 p. m. over WSAI (NBC-WEAF) on the Coca-Cola program.

Victor Herbert operettas— "Madelmoiselle Modiste" and "Eileen"— will be presented in miniature at 10 p. m. over WLW in the "Curtain Calls" half-hour.

College of Music Moves to 2 P.M. Sundays on WLW

The time for the College of Music faculty recital broadcast from WLW every other Sunday has been changed, beginning May 1, from 12:45 noon to 2 p. m. On May 1, Fenton Pugh, tenor, and Dorothy Stolzenbach Payne and Herbert Newman, duopianists, will be presented.

Old Favorites On the Crosley Choir Hour for Sunday

Favorite old melodies will be heard over WLW Sunday (May 1) at 5 p. m. in the Crosley Choir broadcast. Mary Steele, Helen Marie Anderson, Louis John Johnson, Franklin Bens, Wilson Lang and Dean Yocum will be the artists, with Grace Claude Raine, WLW vocal director, conducting.

Paul Robeson and Thelma Kessler Open Kodak Hour

Paul Robeson, concert baritone and stage star, will be guest-singer on the first 1932 Kodak Week-end Hour, opening under Nat Shilkret Friday (April 29) at 8 p. m. over WKRC (CBS).

Robeson will appear with Shilkret's novelty orchestra, male quartet and Thelma Kessler, soprano. He will sing "Water Boy," "Scandalizin' My Name" and "River, Stay Away from My Door."

With the ensemble he will feature in "Without A Song" and other numbers from "Great Day." The male quartet consists of Jack Parker, Willard Amison, Vernon Jacobsen and James Stanley.

Ely Culbertson does most of his work in bed. He rarely dresses before 4 p. m. He never writes a letter—if he can reach his party by phone—even unto London.

Here is the Key to the Out-of-Town Radio Stations

To simplify the tuning of chain stations, the following log of network stations is given with each chain headed by the New York station which broadcasts its programs: (Those marked * take either NBC network.)

NATIONAL BROADCASTING COMPANY

Table listing radio stations and frequencies for National Broadcasting Company, including WJZ, KDKA, KYW, WCKY, WENR, WGAR, WJR, WLW, WLS, WMAQ, WEAF, WENR, WGY, WHAS, WSAI, WTAM, WWJ.

COLUMBIA BROADCASTING COMPANY

Table listing radio stations and frequencies for Columbia Broadcasting Company, including WABC, KMOX, WADC, WBBM, WCCO, WFBM, WHK, WKRC, WLAP, WSPD.

Wise and Otherwise

By BOB NEWHALL



Gehrig vs. Ruth

(A Prophecy With the Usual Apology)

A bunch of the boys were batting them out, In the Yankee Park one day, And the whistling drives 'gainst the distant walls Were pounding a rag-time lay; In an old sweat-shirt that was stiff with dirt, Said the Babe, "I'll ride a few," And watching his luck from the dugout near, Was the laddy that's known as Lou.

Then the months rolled by as they ever do, And two bats flashed in the park Of each rooting town; then the season's end, And a king lay stiff and stark. Crashed on his head and pumped full of lead, Was the Babe we all once knew, And the one who had filched his four-base poke, Was the laddy that's known as Lou!

Ma Stribling's influence over Willie the Clutch may be most beneficial but it occurs to me that Willie's back-pedaling in the ring may be due not so much to the fact that he's tied to her apron-string but that said string is of rubber!

Despite the depression and the outcry against football over-emphasis, it appears that star coaches can still be temperamental and fussy about what jobs to finally accept. Which leads me into the following misdemeanor, being just bursting with song these spring days:

"Oh football coach, in hours of ease Uncertain, coy and hard to please; When jobless days do rend your brow, You do not act as you do now!"

Pepper Martin, being a leap-year baby born on February 29th, is now but seven years of age, which may be the reason fellow travelers, observing Pepper in dining-cars, wonder why the steward doesn't furnish him with a high-chair and a bib!

Great minds would run in the same channel if it were not for the decimal point. For, where Jack Dempsey's exhibition tour netted him a quarter of a million, Max Schmeling's has brought in a quarter of a dollar!

Red Lucas declares he doesn't know whether somebody stole his missing skid-chains or his wife cut them up for costume jewelry!

When Jack Dempsey cancelled his Youngstown bout on account of the flu, it was the first time he ever disappointed anybody. Except, maybe, Estelle Taylor! Who knows!

It is rumored that the new ideas making the slow-motion movie-camera even slower were obtained from watching Eppa Rixey trying to beat out an infield hit and a study of the 1931 Princeton football team in action!

Manager Bill Killifer, of the Browns, says that if Ralph Kress will only observe the training rules, he'll have a big year. In other words, Bill wants Ralph to be a water-kress.

Misery loves Company, let me remark that times are even harder in England. They cut down the distance of the Oxford-Cambridge boat-race a quarter of a mile!

Yours for Mail-Pouch and until next week, So-o-olong!
BOB NEWHALL.



Hello Folkses . . .

"Sally" is no more. She developed hardening of the arteries and was on the verge of a nervous breakdown so we sent her to the old ladies' home. Her place is

taken by a car still in the flower of youth. If you wake up some morning to see a mass of black, red and chromium wrapped around your corner lamp-post you'll know Jim and Walt were there last night.

Blayne Richards came forth with a gag for the column. Sez Blayne: "There's one thing, anyway, you can be sure of these days: 'Posterity' is just around the corner."

We were playing the Sherman Theater in Chillicothe. The letter "S" was missing in the "S-H-E-R-M-A-N" sign. For a while we thought we were Stoopnagle and Budd, playing a theater named Herman.

We ran across a fine example of

MONEY Boys: Sell RADIO DIAL

A little of your time and effort will pay good profits. Here's an easy way to have an income of your own. Show them the kind of salesman you are.

J. Louis Motz News Co. 918 E. Court St., Cincinnati, Ohio Phone CHerry 3205

youthful pride in New Lexington. A little girl and her brother came around to the stage door to talk to us while we were waiting to go on. "Aren't you going to the show?" we asked. "No," they replied. "We haven't got the money." We were in our stage clothes. Our money was back in our hotel rooms. "Tell you what we'll do," we said. "You be back here at five o'clock when we come down for our second show; we'll give you each a quarter and you can see the show." The little girl quickly replied: "No, thank you. You need your money as much as anybody." And that was that.

Across from the WLW studios are a couple of enterprising young fellows named Art and Willie. They run a parking lot, keep cars shined up at so much a week, and generally manage to make quite a tidy sum from Crosley people. Art took a vacation in Florida last season. "On ten dollars," he'll proudly tell you. And the adventures he had! "Once," said Art, "I went swimming in a lagoon with all my clothes on." "Why did you do that?" we asked. "Well, I didn't mean to," he explained. Willie had ten dollars once, too,

but he didn't go to Florida; it seems he loaned it to a WLW artist who paid him back in installments.

Signs of the depression: Ben Bernie's three saxophone players all reading off a single sheet of music. Heh, heh . . . Albee seein' you, Ben.

JIM AND WALT.

VOICE FROM SOUTH

Dixie Lee—a voice from the South—blends the two arts into a style of singing that is all her own, and the listeners of WCKY have taken Dixie and her singing right to their hearts. "Just a Voice on the Air" is the identifying song that introduces this petite songbird several nights weekly. Edith Casagrande matches the beauties of Dixie's songs with her clever piano interpretations and accompaniments.

Sheer Extravagance?

Welcome Lewis pays \$20 a pair for stockings for dress and evening wear. They are woven to order. For gardening by day at her Yonkers (N. Y.) home, this tiny star wears small boys' stockings.

Calvin and Al

Of famous public men who come to the microphone, Ward Wilson credits Calvin Coolidge with the clearest enunciation and Al Smith with the most dramatic delivery.

Tune in . . .

Baseball Scores

WKRC
6:15 P. M.
Daily excepting
Tuesdays
and Thursdays
9:45 P. M.

Sponsored by the
RED TOP MALT
CO., Manufacturer
of the famous
quality—

**RED TOP
MALT**

No More Shaving!



No Razors!
No Cuts!

No Soap! No Wait-
ing at Barbers! And
What a Skin—
Smooth And Cool!

Sensational Discovery Now Makes Shaving With A Razor Unnecessary!

SHAVIX

The FACIAL Depilatory

The only hair remover applied swiftly and easily with a brush! Especially good for tough beards! No rash—no itch—no pimples. Just lay it on and take it off! \$1.00 package lasts from one to two months.

NOTHING ELSE TO BUY

Millions Sold In
U.S. And Abroad

Not a harsh chemical that eats off the hair. But a gentle compound that makes the beard so brittle it "breaks" off. Men with very tender skins now actually enjoy their morning glorification (which, by the way, may now be performed at night, because the beard barely grows overnight). In contrast with razor-shaving, SHAVIX greatly slows up the growth of the beard and makes it much lighter, thinner and softer.

Think of it—the quickest and slickest, closest and smoothest "shave" you ever had—without using a razor! A face so smooth you never knew you had such soft skin! And instead of shaving every day you need apply this delightful new discovery only every other day. Some use it less often! It "breaks" the whiskers off slightly below the skin while a razor cuts them off above the surface. You just cannot believe it till you try it for yourself.

Approved in daily shaving tests over long periods under supervision of a physician. It is the only genuine product approved by Ph. D. H. H. S. of a leading U. S. University and endorsed by well known Laboratories and authorities of U. S. and abroad. Perfectly harmless. BEWARE OF IMITATIONS. Silver medal award.

with this new and gentle depilatory which may be used on face or limbs with great speed and complete freedom from pain or stench.

"Shavix" leaves your skin and complexion soft and smooth like a baby's. It performs the swiftest removal you have ever known. Just think of it, men use it without a razor to take off their tough, stiff whiskers.

The latest fashion demands your legs, arms and armpits smooth and white. Hair on these parts of your body are considered ugly and superfluous. A \$1 package is 4 times larger than most others.



WOMEN
TOO
ARE
DELIGHTED

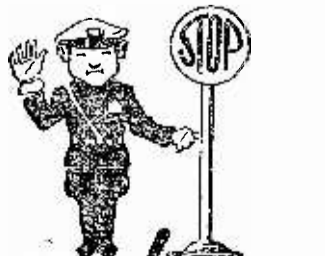
AGENTS ASK FOR SPECIAL OFFER.

Huge Profits!

INTERNATIONAL TRADE SERVICE,
11 West 42nd Street, New York, N. Y., Dept. 863
Please send a large box of "SHAVIX" and a special fibre brush free. I enclose \$1 (or will pay \$1.20 on delivery). "SHAVIX" is fully guaranteed.

Name.....

Address.....



STOP! READ THE CLASSIFIED ADS

Behind the Scenes at WKRC

E. S. M'ttendorf, known to legends as "Mitty" . . . the man who made WKRC . . . and seven years its manager . . . now President of WKRC, Inc., and still very much in the saddle . . . as the managerial chair is jokingly called. Knows all there is to know about radio . . . a tireless worker

"MODEL" ROMANCES

Tune In WKRC 12:15 NOON Every Week Day hear the

IMMORTAL MUSIC and Love Songs of the World MODEL LAUNDRY CO.

for the good of the Station and Columbia Broadcasting System.

What a time the assistant manager has trying to keep up with such a manager. William Osborn ("Oz") is like a short man at the circus trying to look over the shoulders of a tall man in front of him. The circus idea is a good one; the job is a ring-master's job . . . so many things can go wrong. "Oz" has a reputation as a "grouch," but in reality is quite a cheerful person . . . would give anything for eight hours' sleep.

Lucretia Freudenberg ("Luke"), private secretary to "Mitty" and watchdog of the treasury . . . likes flowers and embraces any excuse to buy some . . . such as the general manager's seventh anniversary with WKRC . . . and collects the money for them, too. Likes her Saturday afternoon off . . . and spends a great deal of time with bank books, check books and other financial paraphernalia.

Ray Lawwill . . . formerly the "demon announcer" . . . has

"IF IT'S 'CLEVER DICK' IT'S THE BEST"



"If you must clean: then use 'Clever Dick.'"

"Little Miss Clever Dick"

TUNE IN TO WKRC Mondays at 6:05 P. M. — Fridays at 6:40 P. M. This program is presented to you with the compliments of CLEVER DICK PRODUCTS CO. 1448 Walnut St., Cincinnati Manufacturers of "The Cleaner that Cleans Everything"

passed from a life of remote controls and continuity tongue trippers into the realm of Traffic Manager, where he has nothing to worry about except to see that Columbia's Schedule doesn't crush the life out of local programs . . . his dreams are filled with clock faces, and minute, second and hour hands chasing around at a pace that was never dreamed of by Gruen.

Howard "Moon of My Delight" Hafford . . . first radio voice of Cincinnati . . . now Musical Director . . . and shares 50-50 with "Oz" the title of "Fuss Budget" . . . in charge of all studio programs at WKRC . . . principal difficulty: won't go home . . . also likes flowers . . . still yearning for that "Old Fashioned Garden" . . .

Tommy Mack . . . a newcomer to WKRC's announcing staff, lives at the Hotel Alms so he spends all his time under one roof . . . a Greek Key man from Ann Arbor, with a Philadelphia accent, if you know what we mean. A disciple of Kenneth Robert . . . You will recognize Tommy by his smile that won't come off.

Frank Dieringer . . . the man behind the guns . . . you seldom hear of him, but when you tune in WKRC you may be sure Frank is the reason you get it on your set so clearly and distinctly . . . master of all the gadgets . . . and goes to the University of Cincinnati during his spare time . . . in order to learn even more . . . the kind of man who is so busy his wife complains she never sees him . . . many wives envy her.

Tune in on the Worthmore Twins "Soup" & "Chili"

Hear the songs and piano selections of this popular duo, who bring you daily greetings from the Phil J. Hock & Co., makers of Cincinnati's largest selling brand of Turtle Soup and Chili—


WORTHMORE WKRC 4:30 P. M. Daily, Sunday, 12:45—1:00 P. M. WCKY Wed. and Fri., 5:30 P. M.—6:00 P. M. Sunday, 2:00 P. M.—2:30 P. M.

WALTER WINCHELL— On BROADWAY

THIS TOWN OF OURS

Joan Bennett and Gene Markey, whose marriage pact is only a few weeks old, are already at the First Barrier. . . . Louis Calhern and Julia Hoyt will soon have Something To Say. . . . And the neck-romance of Emil (Wall St.) Roth and Sydel Bloomfield, heirs to the \$9,000,000 chapeau fortune, may reach a June altar. . . . Count Luddy Salm, Millicent Roger's X, ran \$6 up to \$93,000 at the Cannes Casino last Wed. and ran it down to 60 cents the following night. . . . And let that be a lesson! . . . The 24-hour bodyguard that trails Barbara Hutton, of the Woolworth millions, has been increased by another husky, two of the armed-corps following her limousine in a bullet-proof sedan. . . . The Russ Columbo-Dorothy ("Follies") Dell sweet-words, which were interrupted by NBC execs. a few mos. ago, were resumed at the C. P. Casino premiere. . . . Because of the favorable treatment of the pressing Red regime in his new vol., "The Hist. of the Russian Rev.", Leon Trotsky's return from exile is being plotted by Stalin. . . . Aside to Z. X. Z.; Police Com. Mulrooney has that interesting letter of yours—so, little boy, better keep your nose clean.

Elvin N. Edwards, D. A. of Nassau Co., who handled the 5-gun Crowley and the Starr Faithful cases, is planning a secret campaign for Governorship on the Rep. billet . . . Rosa Ponselle is seeking a ghost to write her "inside" on the opera racket, which will score you, me and them . . . Gustave Tenggren, the play-boy painter, turned down a \$25,000 syndicate offer last wk to trip the South Seas . . . The 1st female pilot under: 21 to get a com. license will be Peggy Haynes, the Philly deb. . . . There'll be S. R. O. at Municipal Court Tues. when Lynn Fontanne appears in her fur dispute . . . After all these years, Clara Kimball Young will return to the stage for a farewell bow in Nov. . . . Lois (Bway Virgin) Bull is seriously ailing . . . Terry Jackson, the real estate heir, who is singing the blues for Jean Murray, now blissfully cruising the Mediterranean, will assuage his love pains with a law course at Oxford. . . . Irene Schoelkopf Carmen's income is down to a mere 30 or 40 G's a yr, poor thing! . . . James Cagney will learn here that Warners have already signed Lee ("Broadway") Tracy for the emotion-version of "Blessed Event" . . . And the whispers would have you believe that Heywood Broun's hairs are not really the hue they appear to the naked eye.



Doodlescocker Dribbles By SIDNEY TENEYCK

As I write this little bit of nothing in particular my heart leaped and boundeth with that essence of joy known only to the potentates of ancient Egypt when a new species of caviar had been found growing in copious abundance in the family gardens. Perhaps that sounds just a bit incoherent 'at I'm going home tomorrow for a week's visit and the best part of it is my esteemed parents, Turtleback and Tuliptime Teneyck, know nothing of their fair-haired boy's coming. What is

that cartoon called, "It's a grand and glorious feeling."

Installed the latest Crosley Roamio in the family wreck and while cruising the byways last night, heard our old friends, Andy Mansfield and Virginia Leg, from some station west of the Mississippi. I forgot the call letters but Andy was doing one of his famous pianologues concerning the burning of Rome and the roasting of sliced curtain rods. It ended with the fire department setting fire to the village water pump and everyone was happy again.

You know, I suppose, that Bradley Kincaid is the proud father of twin girls and a husky baby boy. That makes three altogether and in a moment of weakness I asked him when he was going to purchase another baby boy to even matters up. He informed me that he had read a compilation of reliable statistics stating that every fourth child born in the world was a Chinese. He's taking no chances, he said.

Talk about conveniences in the modern broadcasting station. The WLW visitor's lounge is even equipped with an electric refrigerator. (One of Crosley's own placed there on display.) Tonight I caught Joe Ries snatching a chicken and five tomatoes from its spacious shelves and wending his way homeward with them, fresh as a pansy in the morning dew. As soon as everyone around the studio gets hep to this new convenience, unscrupulous members of the staff (announcers probably) will be getting free meals.

Our inimitable call-letter caller, Blayne Richards, is seated across from me cutting paper dolls and otherwise trying desperately to amuse himself whilst friend wife sojourns in a far away state. I understand she'll be gone at least two months. His phone number is UNIVERSITY 0332-M. All Sunday dinner invitations welcomed.

Just think, when this goes to press Monday evening, Great Grandfather Tarbaby, the immortal Turtleback, and the humble under-designed will be supping fermented flagons of fluctuating fig fluid or possibly a couple cups o concentrated corn cure. O: sump'n.

SIDNEY TENEYCK.

WHEN YOUR RADIO IS NOT WORKING SATISFACTORILY Call Cherry 9037 and one of our experts will call at your home and make a complete test of your radio and tubes for only

50c

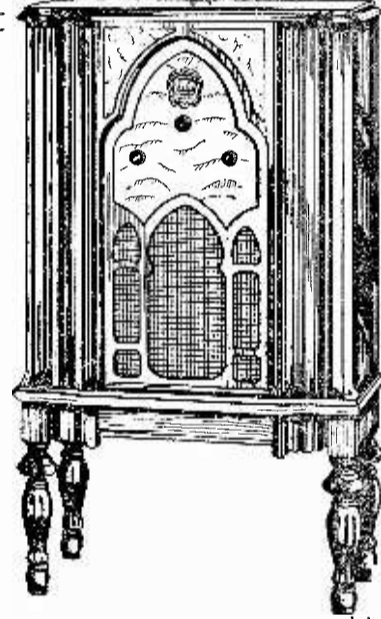
RELIABLE RADIO SERVICE CHerry 9037 All Work Guaranteed 90 Days

The Crosley CAROLER

EIGHT TUBE SUPERHETERODYNE PUSH-PULL PENTODE OUTPUT DYNAMIC SPEAKER TONE CONTROL

\$59.75

COMPLETE WITH TUBES Price subject to change. Any Federal or state taxes which may be levied must be added to this price.



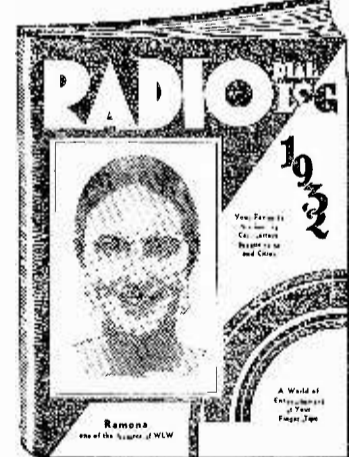
TRY TO MATCH THIS FOR VALUE

Think of getting this eight tube Superheterodyne radio in a beautiful 40-inch console model cabinet for as little as \$59.75! Turn the dial and see how many stations you can tune in with it. Compare it side by side with other makes of radios selling anywhere nearly as low as \$59.75. Such tremendous value has made this radio one of the most popular on the market today. If you are looking for a low-priced console of exceptional performance, see and hear this remarkable receiver. Then you will be convinced that it is the radio for you.

THE CROSLLEY DISTRIBUTING CORPORATION DISTRIBUTORS 3401 COLERAIN AVE. CINCINNATI, O.

YOU'RE THERE WITH CROSLLEY CROSLLEY RADIO

Know ALL the Stations with RADIO DIAL LOG BOOK . . . FREE!



Dial and identify radio stations all over the world with this new LOG BOOK. For a limited time, you can have a copy free with a 6-months' subscription to RADIO DIAL. Here's an idea of what it contains:

1. U. S. and Canadian radio stations listed alphabetically. With space for filling in dial setting on your set.
2. U. S. and Canadian stations listed by frequencies.
3. All stations in U. S., listed by States.
4. Network stations associated with N. B. C. and C. B. S., listed three ways.
5. FOREIGN long-wave stations.
6. Short-wave stations all over the world.
7. Television stations all over the world.
8. Police broadcasting stations.

Convenient—Accurate—Complete—Official

RADIO DIAL 22 E. 12TH STREET, CINCINNATI, OHIO 5 L-B

Send a copy of Radio Dial LOG BOOK Free, and enter my subscription to Radio Dial for 6 months (26 weeks), to start at once. Enclosed is \$1.00.

New Subscriber Renewal

Name _____

Address _____

City _____ State _____

COMPLETE PROGRAMS FOR FRIDAY, APRIL 29, ON THIS PAGE

WSAI (225m.—1330 kc.)

8:00 A. M.—Gene and Glenn (NBC)
8:15—Popular Musicale
8:45—Layne Mountaineer Fiddlers
9:00—Morning Dance Concert
9:30—Newman Program (NBC)
9:45—Betty Crocker (NBC)
10:00—Music Appreciation Hour (NBC)
11:00—General Electric Circle (NBC)
11:15—Celebrated Compositions
Noon—Dance Selections
12:50 P. M.—Live Stock Reports
1:00—Organ Matinee
1:30—Matinee Favorites
2:15—Happiness Kids
2:30—Musical Forum
3:00—Betty Moore Decorating Notes (NBC)
3:15—Afternoon Melodies
4:00—Classical Program
4:15—Skippy (NBC)
4:30—Celebrated Compositions
5:00—Crosby Dealers Salute
5:15—Aces of Harmony
5:30—Southern Singers
5:45—Memory Hour
6:00—Happiness Kids
6:15—Talk by Alice Richards
6:30—Prince Albert Quarter Hour (NBC)
6:45—Trials of the Goldbergs (NBC)
7:00—Cities Service Concert Hour (NBC)
8:00—Cl'couot Club (NBC)
8:30—Pond's Dance (NBC)
9:00—The Sampler Orchestra (NBC)
9:30—National Oratoric Society (NBC)
10:00—Gus Arnheim's Orchestra
10:30—Hotel Gibson Dance Orchestra

WFBE (250m.—1200 kc.)

7:00 A. M.—Break of Day
7:15—Musical Clock
8:30—Birthday Greetings
8:45—Morning Concert
9:00—Our Daily Thought
9:15—Hy C. Geis, organ
9:45—Gold Nuggets
10:05—Dot's School Children's Popularity Program
10:20—Beauty Notes
10:35—WFBE RKO Theatre Party
10:50—Mrs. Evans' Advice
11:00—Mary and John, sketch
11:15—Lyric Program, Musical Novelties
11:30—Beulah Davis, pianist
11:45—Elinor Hurdle, character sketches
Noon—News in Cincinnati
12:30 P. M.—Little Black Joe, songs
12:45—Alfred McCoy, songs
1:00—Victor Salon Orchestra
1:15—Children's Hour, Robert Bentley
1:30—Slumber Songs
1:45—Mrs. Lloyd Hoshaw, readings
2:00—Charles Daunt, tenor
2:15—Mrs. Adolf Hahn and Bertha Mathers
2:45—Cincinnati Reds vs. Pittsburgh, at Pittsburgh
5:00—Bee Campbell
5:15—Pirates Club
5:30—Northside Musicale
5:45—Jules Sein
6:00—Dr. Lewis Dentists—Dot Lee
6:15—Studio
6:30—John McCormick, recordings
6:45—Lost and Found
6:50—Studio
7:15—Post Question Box
7:30—Sports Review, Harry Hartman
7:40—Elaine Ritter, mezzo soprano
7:55—Lost and Found
8:00—Your Garden
8:15—Kentucky Post Program—Marie Holly
8:30—P. K. A. Trio
8:45—Werner Burkhardt, baritone
9:00—The Luckey Boys, piano and banjo
9:15—In the Gloaming, Glenna Will Newland
9:30—Wrestling Matches
11:00—Nocturne

WKRC (545m.—550 kc.)

6:45 A. M.—God's Bible School—Sunrise Worship
7:45—Churngold—The Breakfast Club
8:00—Raysol—Old Time Singing
8:15—Gladys Catron, organist
8:30—Pylol Program
8:45—Cudaby Co.—The Old Dutch Girl (CBS)
9:00—Prescott—The Grant Trio (CBS)
9:15—H. & S. Pogue Co.—Jean West
9:30—Consolidated Merchants Program
9:45—Martin Senour—Don and Betty (CBS)
10:00—F. W. Fitch—The Professor (CBS)
10:15—Lane Cedar Chest—The Reporter (CBS)
10:30—Best Foods—Round the World Cooking School (CBS)
10:45—Consolidated Merchants Program
11:00—Ready-To-Bake Period
11:05—Weather—Time
11:07—Woman's Hour—Tremlette Tully
11:30—Kre-Mel—The Singing Chef (CBS)
11:45—Zorex—Moth Chasers (CBS)
Noon—Miracul Wax—Magic Piano Twins (CBS)
12:15 P. M.—Model Laundry—Model Romances
12:30—Cincinnati Merchants Program
1:00—Cincinnati Paint Club
1:15—Farm Network Program (CBS)
2:00—Studio
2:15—Burck-Bauer Program
2:30—Julia Hayes—Helpful Household Hints
3:00—Queen City Rug Makers
3:15—Sulfox Health Program
3:30—Main Street Business Men
3:45—Worthmore—Soup and Chili
4:00—Pylol Program
4:15—Raysol—Howard Hafford, tenor
4:30—Pollyanna Shoes—Children's Stories (CBS)
4:45—Crazy Crystals Program
5:00—Re-Nu Program
5:15—Malted Products—Golden Age Organist
5:30—Weather Forecast
5:30—Cincinnati Trade School—Ruth Reeves
5:45—Stocks—Studio
5:54—Coney Island Calliope—Time Signal
6:00—Wrigley—Myrt and Marge (CBS)
6:15—Red Top Baseball Scores
6:20—To be announced
6:30—Lavoris—Easy Aces (CBS)
6:45—Camel—Morton Downey (CBS)
7:00—Linit—The Bath Club (CBS)
7:15—Barbasol—Singin' Sam (CBS)
7:30—Speed Blend Auto Polish—Today and Yesterday (CBS)
8:00—Eastman—Kodak—Paul Robeson, baritone (CBS)
8:30—Woodbury Soap—Leon Belasco's Orchestra (CBS)
8:45—Van Heusen—Gus Van (CBS)
9:00—Allen "A"—Beau Bachelor (CBS)
9:15—Horlicks Milk—Adventures In Health—Dr. Herman Bundeson (CBS)
9:30—Chesterfield—Alex Gray (CBS)
9:45—Wurzberg—The German and His Parrot
10:00—Howard Barlow Symphony (CBS)
10:15—Maxwell Coffee—Lannie Ross and Don Voorhees (CBS)
10:30—Weather Forecast—Studio
11:00—Studio
11:15—Isham Jones' Orchestra (CBS)
11:30—Paul Specht's Orchestra (CBS)

WCKY (202m.—1490kc.)

7:00 A. M.—Kapua's Native Hawaiians
7:15—Morning Devotions (NBC)
7:30—Cheerio (NBC)
8:00—Eureka Weather Forecast
8:01—Morning Eyeopeners
8:15—Cumberland Fiddlers
8:45—Band Selections
9:15—Clara, Lu and Em (NBC)
9:30—Tunes in Blue
10:00—Florence Frey Beauty Talk
10:15—Vocal Refrains
10:30—Georgia Gay
10:45—Tomy Ott, organ
11:00—Musical Novelties
11:30—Gene Rupee's Fiddlers
Noon—Luncheon Concert
12:25 P. M.—Norris Brock live stock quotations
12:30—National Farm and Home Hour (NBC)
1:30—Dance Tunes
1:45—Richard Porter, singing pianist
2:00—Siesta Musical
2:30—Moods in Blue
3:00—Bill and Audrey
3:15—This 'n' That
3:30—Wurlitzer's Music School of the Air
4:00—Asher Sizemore and little Jimmy
4:15—Jimmy Eldred
4:30—Kapua's Native Hawaiians
4:45—Little Orphan Annie (NBC)
5:00—Stegner's "Snowdrifts," Jack Snow
5:15—Dr. Belber Quarter Hour
5:30—Royal Vagabonds (NBC)
5:45—Late Dance Tunes
5:55—WCKY Newsmen
6:00—Amos 'n' Andy (NBC)
6:15—Helen Royce, singing the blues
6:30—The Stebbins Boys (NBC)
6:45—Jones and Hare (NBC)
7:00—Nestle Chocolateers (NBC)
7:30—Tommie and Willie, the Coca Cola twins
8:00—Bob Rainier's Lookout House Orchestra
8:30—It Pays to Advertise
8:59—Eureka Weather Forecast
9:00—Pontiac Chieftans (NBC)
9:30—Gustave Haenschen's Orch. (NBC)
9:45—On to Prosperity
10:15—Slumber Music (NBC)
10:30—Vincent Lopez Orchestra (NBC)
11:00—Art Cox Vagabonds
11:15—Club Royal Orchestra
11:30—Hal Kemp's Orchestra (NBC)
12:00—Sign off

WLW (428m.—700 kc.)

6:30 A. M.—Top o' the Morning
7:00—Morning Exercises
7:15—Morning Devotions
7:30—The Round Table
8:30—Beautiful Thoughts (NBC)
8:45—The Early Burdettes—Exercises
9:00—Rumford School of Cookery
9:15—A. & P. Dance Orchestra
9:30—"Our Daily Food," Colonel Goodbody (NBC)
9:45—Rit Cleaning Program
10:00—Live Stock Reports
10:10—Musical Interlude
10:15—Threesome
10:30—Ramona
10:45—Talent Bureau Program
11:00—WLW Mail Bag
11:15—Pat Barnes in Person (NBC)
11:30—Wilson Premium Man
11:45—Morin Sisters
Noon—Tuxedo Fiddlers
12:15 P. M.—Mel Snyder's Orchestra
12:45—Market Reports
12:50—Live Stock Reports
1:00—National Farm and Home Period (NBC)
1:30—Gus Arnheim's Orchestra
2:00—School of the Air
3:00—Varsity Quartet
3:15—Pat Harrington
3:30—String Trio
3:45—Aces of Harmony
4:00—A. & P. Dance Orchestra
4:30—The Singing Lady (NBC)
4:45—The Chatter
5:00—Old Bill
5:15—Bird Talk by Dr. Glenn Adams
5:30—Grace Bradt
5:45—Lowell Thomas (NBC)
6:00—Amos 'n' Andy (NBC)
6:15—"Law for the Layman," Attorney Reuben Horchow
6:30—Mail Pouch Sportsman—Bob Newhall
6:45—Old Man Sunshine
7:00—Peanut Pietro
7:15—Gus Arnheim's Orchestra
7:30—Sisters of the Skillet (NBC)
7:45—To be announced
8:00—Quaker State Oil Program
8:15—Mel Snyder's Orchestra
8:30—Kruschen Program
8:45—Centerville Sketches
9:00—Dayton Thorobreds
9:30—Singing Violin
9:45—Alaga Melodies—Jim and Walt
10:00—Vox Humana
10:30—Tommy Atkins' Londoneers
10:45—Headlines of Yesterday
11:00—Cab Calloway's Orchestra (NBC)
11:30—To be announced
Midnight—Mel Snyder's Orchestra
12:30 A. M.—Gus Arnheim's Orchestra

Network Programs

6:00 P. M.—Myrt and Marge. WABC WKRC wvva wadc wspd
—Henri Gendron's Orchestra. (CBS) wbbm
—Dream Pictures: Archer Gibson, organist. WFAF wvj
—Amos 'n' Andy. WJZ WLW WCKY kdka
—The Singing Lady: nursery songs and stories. (NEC) kstp
6:15—Maxwell House Tune Blenders: Lanny Ross, baritone. WABC
—Paul Specht's Orchestra. (CBS) wlap wbbm
—Esso Program: Robert L. Ripley, "believe-it-or-not;" Harry Salter's Orchestra. WJZ kdka
6:30—Easy Aces: bridge comedy sketch. WABC WKRC whk wfbm wcco kmox wgn
—Prince Albert Quarter Hour: Alice Joy, contralto; "OP Hunch;" Paul Van Loan's Orchestra. WFAF WSAI wgy wtam
—The Stebbins Boys: comedy sketch with Parker Fennelly and Arthur Allen. WJZ WCKY kdka wgar wjr wenr-kstp
6:45—The Camel Quarter Hour: Morton Downey; Tony Wons; Jacques Renard's Orchestra. WABC WKRC wvva wadc whk wch wcpd wowo
—The Goldbergs: comedy sketch. WFAF WSAI wgy wtam wvj wwr
—Billy Jones and Ernie Hare: songs and patter. WJZ WCKY kdka wmaq whas
7:00—The Bath Club: Allie Lowe Miles interviewing guest; Harold Van Duzee, tenor; male quartet; Frank Ventree's Orchestra. WABC WKRC wadc whk wch wcpd wfm wcco kmox wgn
—Cities Service Concert: Jessica Dragonette, soprano; Cavaliers Quartet; Harry Shope and Frank Parker, tenors; John Seagle, baritone; Elliot Shaw, bass; Frank Banta and Milton Rettenberg, piano duo; Rosario Bourdon's Orchestra. WFAF WSAI wtam wvj kyw kstp (wgy off 7:30)
—Nestle's Program: Jack Haley, songs; Leonard Joy's Orchestra. WJZ WCKY kdka wgar wls
7:15—"Singin' Sam, the Barbasol Man. WABC WKRC wadc whk wcpd wfbm wcco kmox wgn
7:30—Today and Yesterday: dramatic and music highlights. Don Voorhees' Concert Orchestra; soprano: du Pont Quartet; Cammie Carr. WABC WKRC wadc whk wcpd wfm wcco kmox wgn
—Tomy Program: E. A. Rolfe and his Orchestra. WJZ WLW kdka wls
7:45—"Sisters of the Skillet: Fede and Ralph, songs and dialogue. WJZ WLW kdka wgar wjs
8:00—Eddie's Week-End Hour: Paul Robeson, baritone. WABC WKRC wvva wadc wcpd wlap wfbm wcco kmox
—Claret Club: Eskimo Night Club; Harry Roe's Orchestra; Eskimo Quartet. WFAF WSAI wgy wtam wvj wls
—Friends 'n' Town: "small town" sketch; Harry S. Her's Orchestra. WJZ kdka wgar wjr kyw kstp whas
8:30—To the Ladies: Leon Belasco's Orchestra; Tito Guizar, Mexican tenor. WABC WKRC wadc whk wcpd wfbm wcco kmox wgn
—Pond's Program: Leo Raiman Orchestra. WFAF WSAI wgy wtam wwr
—Armour Program: Edna Kibbig, soprano; male quartet; Roy Sield's Orchestra. WJZ WLW kdka wgar wjr kstp whas
8:45—Van Heusen Program: Gus Van; Nat Brasloff's Orch. WFAF WKRC wadc whk wcpd wfbm wcco kmox wgn
—Dan Rocco's Orchestra. (CBS) wcco
9:00—Beau Bachelor. WABC WKRC wadc whk wcpd wowo wfbm wbbm wcco kmox
—Sampler Orchestra: Andy Sannel'a, conductor; Fred Hufsmith, tenor. WFAF WSAI wgy wtam wvj wmaq
—Paul Wilkinson's Pontiac Chieftans: Mildred Bell, crooner; Jack Fulton, tenor; Red McKenzie, baritone; the

NETWORK PROGRAMS

King's Jesters; the Romancers. WJZ WCKY kdka wgar wjr wenr kstp whas
9:15—Adventures in Health: Dr. Herman N. Bundeson, Health Commissioner of Chicago. WABC WKRC wadc whk wcpd wowo wfbm wbbm wcco kmox
9:30—Music That Satisfies: Alexander Gray, baritone; Nat Shilkret's Orchestra. WABC WKRC wadc whk wch wcpd wlap wowo wfbm wbbm wcco kmox
—National Oratoric Society: "The First Walpurgis Night;" Reinold Werrenrath, conductor. WFAF WSAI wtam whas
—Gustave Haenschen's Orchestra; Frank Munn, tenor. WJZ WCKY kdka wgar wjr kyw
9:45—The Funnyboners: comedy and songs. WABC wadc
—Myrt and Marge. (CBS) wlap wbbm wcco
—The Pickens Sisters: Jane, Helen and Marla, harmony trio. WJZ
10:00—Howard Barlow and the Columbia Symphony Orchestra. WABC WKRC wadc whk wch wcpd wlap wfbm wcco kmox
—Russ Columbo and his Orchestra. WFAF
—Slumber Music: Ludwig Laurier's String Ensemble. WJZ (WCKY on 10:15)
—Amos 'n' Andy. (NBC) wmaq wenr kstp whas wgar wjr
10:15—Maxwell House Tune Blenders: Lanny Ross, baritone. (CBS) WKRC wadc whk wcpd wlap wowo wfbm wcco kmox wgn
—Vincent Lopez' Hot-1 St. Regis Orchestra. WFAF (WCKY wtam on 10:30)
—Prince Albert Quarter Hour. (NBC) wcnr whas
10:30—Don Redman's Connie's Inn Orchestra. WABC (wadc wch wcpd wlap wowo wfbm wcco on 10:45)
—The Camel Quarter Hour. (CBS) wlap wowo wfbm wcco kmox wgn
—Charles Dornberger's Mount Royal Hotel Orchestra. WJZ wjr wenr (kdka kstp on 10:45)
11:00—Isham Jones' Orchestra. WABC wadc wch wcpd wlap wfbm wbbm wcco (WKRC on 11:15)
—Ralph Kirbery: The Dream Singer. WFAF wgy wcnr

OVER WCKY

Latest news of national, local and fashion events will be given each Monday, Wednesday and Friday at 9:30 a. m., beginning Monday (May 2), over WCKY, by Natalie Giddings for the John R. Coppin Company, dry goods, Covington, Ky. She will be billed as Gloria Lee. Miss Giddings is well known to women radio listeners through a year of broadcasting as WLW's first woman's hour director.

Kruschen is New Commercial at "Nation's Station"

The Kruschen Program, sponsored by makers of Kruschen Salts, is a new commercial at WLW and is heard each Tuesday and Friday at 8:30 p. m. The program features the Morin Sisters, vocal trio; Casper Reardon, harpist, and orchestra directed by Lloyd Shaffer.

NETWORK PROGRAMS

—Cab Calloway's Cotton Club Orchestra: Ada Ward, crooner. WJZ WLW kdka wgar wmaq
11:05—Johnnie Hamp's Hotel New Yorker Orchestra. WFAF wgy wcnr
11:15—Hal Kemp's Orchestra. WJZ wcnr (WCKY on 11:30)
11:30—Paul Specht's Orchestra. WABC WKRC wadc whk wcpd wlap wcco (wfbm on 11:45)
—Jack Denny's Waldorf-Astoria Hotel Orchestra. WFAF wcnr kstp
Midnight—Claude Hopkins' Roseland Ballroom Orchestra. WABC
12:00 A. M.—Coom-Sanders' Orchestra. WABC

ON ACCORDION

Earl Edmonds is the accordion

player to whom WCKY listeners look forward every Monday and Thursday at 11:15 a. m.

DAYTON ELECTRIC REFRIGERATOR 4 Cubic Feet All 20 Gauge Steel Cabinets, Stainless Porcelain Interior only 129.50 Easy Terms if Desired 5 Cu. Ft. Dayton \$159.50 6 Cu. Ft. Dayton \$179.50 8 Cu. Ft. Dayton \$209.50 Free Radio Dial Log Book to the first 25 persons presenting this advertisement. Get your free copy today. STORE OPEN EVENINGS CLAUSS ELECTRIC 110 E. 8th BETWEEN WALNUT & MAIN Parkway 3778

COMPLETE PROGRAMS FOR SATURDAY, APRIL 30, ON THIS PAGE

WSAI (225m.—1330 kc.)

8:00 A. M.—Gene and Glenn (NBC)
 8:15—Popular Musicale
 8:45—Layne Mountaineer Fiddlers
 9:00—Morning Dance Concert
 9:15—Knox Sparkling Music (NBC)
 9:30—Layne Mountaineer Fiddlers and Aces of Harmony
 10:00—Light Classics
 10:15—Radio Household Institute (NBC)
 10:45—Light Classics
 11:00—Musical Forum
 11:30—Live Stock Reports
 11:45—Dance Selections
 1:00 P. M.—Parody Man
 1:15—Matinee Favorites
 2:15—Happiness Kids
 2:30—Musical Forum
 3:00—Washington Bicentennial Celebration (NBC)
 3:30—Dance Melodies
 4:00—Classical Program
 4:15—Skippy (NBC)
 4:30—Blue Moon Cuckoos (NBC)
 5:00—Crosley Dealers Salute
 5:15—Southern Singers
 5:30—Memory Hour
 5:45—Happiness Kids
 6:00—Aces of Harmony
 6:15—Laws that Safeguard Society (NBC)
 6:30—Prince Albert Quarter Hour (NBC)
 6:45—Trials of the Goldbergs (NBC)
 7:00—Ely Culbertson, bridge expert (NBC)
 7:15—Gus Arnheim's Orchestra
 7:30—National Advisory Council on Radio in Education (NBC)
 8:00—"K-7" (NBC)
 8:30—Club Valspar (NBC)
 9:00—Lucky Strike Dance Hour (NBC)
 10:00—Mel Snyder's Orchestra
 10:30—Gus Arnheim's Orchestra

WFBE (250m.—1200 kc.)

7:00 A. M.—Break of Day
 7:15—Musical Clock
 8:30—Birthday Greetings
 8:45—Morning Concert
 9:00—Our Daily Thought
 9:15—Song Birds
 9:30—College Tunes
 9:45—Studio
 10:05—School Children's Popularity Program
 10:20—Walter Wehmier Program
 10:35—WFBE-RKO Theatre Party
 10:50—Ruth Neeley, Women in the News
 11:00—Pabst Musical
 11:15—Studio
 11:30—Marion Hemple, songs
 11:45—Lola Bruce Smith and Don Cheek
Noon—News in Cincinnati
 12:30 P. M.—Max Fisher's Californians
 1:00—Sara Drucker
 1:15—Robert Bentley, Children's Hour
 1:30—Mrs. John A. Hoffman and guest artists
 2:00—Studio
 2:15—Charles Daunt, tenor
 2:30—Harvey Harding, piano and voice
 2:45—Cincinnati Reds vs. Pittsburgh, at Pittsburgh
 4:45—Lulu Mae Clore, soprano and Vivienne Law, pianist
 5:00—Variety
 5:15—The Pirates' Club
 5:30—Madge Alden and Bernice Stugard
 5:45—Murdoch Williams, piano and voice
 6:00—Dr. Lewis Dentists—Dot Lee
 6:15—The Whistlers Club
 6:30—Fritchie and Harrison, musicale
 6:45—Lost and Found
 6:50—Studio
 7:15—Post Question Box
 7:30—Sports Review, Harry Hartman
 7:40—Hazel Storey Webber, songs Ruth N. Webber, piano
 7:55—Lost and Found
 8:00—Cliff Burns and His Orchestra—Green Mill
 8:15—Philansue Trio
 8:30—Covington and Hersh
 8:45—Studio
 9:00—Lucky Boys
 9:15—Cliff Burns and His Orchestra—Green Mill
 9:45—Hy C. Geis, Organ Recital
 10:00—Evening Dance Frolic
 10:15—"Dinty" Moore's Scrap Book
 10:30—Norturne—Lillian Sherman

WKRC (545m.—550 kc.)

6:45 A. M.—God's Bible School—Sunrise Worship
 7:45—Churngold—The Breakfast Club
 8:00—Raysol—Old Time Singing
 8:15—Gladys Catron, organist
 8:30—Pyol Program
 8:45—Main Street Business Men
 9:00—U. S. Army Band (CBS)
 9:15—H. & S. Pogue Co.—Jean West
 9:30—Consolidated Merchants Program
 10:00—Weather—Lange Time Signal
 10:03—Woman's Hour—Tremlette Tully
 10:30—Sulfox Health Program
 10:45—Queen City Rug Makers
 11:00—Julia Hayes—Helpful Household Hints
 11:30—Re-Nu Program
 11:45—Wingate Athletic Program (CBS)
Noon—Geo. Hall's Orchestra (CBS)
 12:15 P. M.—Model Laundry—Model Romances
 12:30—Cincinnati Merchants Program
 1:00—Farm Network Program (CBS)
 2:00—Penn Relays (CBS)
 2:45—Rhythm Kings (CBS)
 3:00—Do Re Me (CBS)
 3:15—Spanish Serenade (CBS)
 3:30—Graves—Musical Shopping Guide
 3:45—Pyol Program
 4:00—Studio
 4:15—Eddie Duchin's Orchestra (CBS)
 4:30—Worthmore—Soup and Chili
 4:45—Connie Boswell (CBS)
 5:00—Snooks Friedman's Orch. (CBS)
 5:15—Malted Products—Golden Age Organist
 5:30—Cincinnati Trade School—Larry Hoppe
 5:45—Stocks—Weather—Time Signal
 5:47—Coney Island Calliope—Studio
 6:15—Red Top Baseball Scores
 6:20—Studio
 6:30—Babo—Guy Lombardo and His Orchestra (CBS)
 6:45—Camel—Morton Downey (CBS)
 7:00—Laboratory Experiment Series (CBS)
 7:15—Phillips—Abe Lyman's Orchestra (CBS)
 7:30—Photoplay—Life Stories of Movie Stars (CBS)
 8:00—Raysol Symphony Orchestra
 8:15—Jr. Chamber of Commerce Program
 8:30—Horse Shoe Gardens—Harry Willsey
 9:00—Chesterfield—Ruth Etting (CBS)
 9:15—Columbia Public Affairs Institute (CBS)
 9:45—Street Singer (CBS)
 10:00—Don Redman's Orchestra (CBS)
 10:30—Weather—Studio
 10:45—Enric Madriguera's Orch. (CBS)
 11:00—Guy Lombardo's Orchestra (CBS)
 11:30—Harold Stern's Orchestra (CBS)

WCKY (202m.—1490kc.)

7:00 A. M.—Kapua's Native Hawaiians
 7:15—Morning Devotions (NBC)
 7:30—Cheerio (NBC)
 8:00—Eureka Weather Forecast
 8:01—Morning Eyeopeners
 8:15—Gene Rupee's Fiddlers
 8:45—Peppy Tunes
 9:15—Vocal Varieties
 10:00—Mrs. A. M. Goudiss (NBC)
 10:15—Tunes in Blue
 10:45—Tommy Ott at the Organ
 11:00—Willie's Music School of the Air
 11:30—Cumberland Fiddlers
Noon—Luncheon Concert
 12:25 P. M.—Norris Brock Live Stock Quotations
 12:30—National Farm and Home Hour (NBC)
 1:30—Geo W. Hill, pantry tunes
 1:45—Siesta Musicale
 2:30—Moods in Blue
 3:00—Larry Topper at the piano
 3:15—Kampus Kutups
 3:30—Saturday Matinee (NBC)
 4:00—Asher Sizemore and Little Jimmy
 4:15—Dr. Lewis' Junior Broadcast Club
 4:30—Palm Beach Buddies
 4:45—Little Orphan Annie (NBC)
 5:00—Stegner's "Snowdrifts," Jack Snow
 5:15—Waldorf-Astoria Orchestra (NBC)
 5:30—Audrey and Bill
 5:45—Late Dance Tunes
 5:55—WCKY News Man
 6:00—Amos 'n' Andy (NBC)
 6:15—Tastyest Jesters (NBC)
 6:30—Dixie Lee
 6:45—To be announced (NBC)
 7:00—Danger Fighters (NBC)
 7:30—Tommie and Willie—Coca Cola Twins
 8:00—Joseph Koestner Ensemble (NBC)
 8:30—It Pays to Advertise
 8:59—Eureka Weather Forecast
 9:00—Four New Yorker's (NBC)
 9:15—Bob Rainier's Lookout House Orchestra
 9:30—Twenty Fingers of Harmony (NBC)
 10:00—Chico 'n' Peppina
 10:15—Slumber Music (NBC)
 10:30—Earl Arnold's Floatilla Club Boys
 11:00—Musical Interlude
 11:05—Buddy Rogers and his California Cavaliers (NBC)
 11:30—Club Royal Orchestra
Midnight—Art Cox Vagabonds

WLW (428m.—700 kc.)

6:30 A. M.—Top o' the Morning
 7:00—Morning Exercises
 7:15—Morning Devotions
 7:30—The Round Table
 8:30—Beautiful Thoughts (NBC)
 8:45—The Early Burdettes
 9:00—Garden Club
 9:15—A. & P. Dance Orchestra
 9:30—"Our Daily Food," Colonel Goodbody (NBC)
 9:45—Art Talk
 10:00—Live Stock Reports
 10:10—Musical Interlude
 10:15—Threesome
 10:30—Ramona
 10:45—Layne Mountaineer Fiddlers
 11:00—Alaga Melodies—Jim and Walt
 11:15—Pat Barnes in Person (NBC)
 11:30—Live Stock Reports
 11:45—Old Bill
Noon—Governmental Glimpses
 12:15 P. M.—Hotel Gibson Orchestra
 12:30—National Farm and Home Period (NBC)
 1:30—Gus Arnheim's Orchestra
 2:00—Old Bill
 2:15—Organ Matinee
 2:45—Secretary Hawkins
 3:15—Pat Harrington
 3:30—Varsity Quartet
 3:45—Aces of Harmony
 4:00—A. & P. Orchestra
 4:30—Southern Singers
 4:45—The Chatter
 5:00—Crosley Dealer's Hour
 5:30—Ramona
 5:45—University of Cincinnati Talk
 6:00—Amos 'n' Andy (NBC)
 6:15—Gus Arnheim's Orchestra
 6:30—Mail Pouch Sportsman
 6:45—Old Man Sunshine
 7:00—Peanut Pietro
 7:15—Mel Snyder's Orchestra
 7:30—Crosley Theatre of the Air
 8:00—Octavio's Rancheros
 8:30—The First Nighter (NBC)
 9:00—The Crosley Follies
 9:30—Old Bill and WLW Singers
 10:00—Sohio Program, "The Trial of Vivian Ware"
 10:30—Over the Rhine
 10:45—Headlines of Yesterday
 11:00—Jack Denny's Orchestra (NBC)
 11:30—Doodlesocks
Midnight—Gus Arnheim's Orchestra
 12:30 A. M.—Mel Snyder's Orchestra

Network Programs

6:00 P. M.—The Political Situation in Washington Tonight: Frederic William Wile. WABC wwva wadc wlap wowo wbbm wcco
 —D'Avrey of Paris, songs. WEA F
 —Amos 'n' Andy. WJZ WLW WCKY kdka
 6:15—William Vincent Hall, baritone, with Freddie Rich's Orchestra. WABC wwva wadc wlap wcco
 —Laws That Safeguard Society: "Effect of Return of Ring in Breach of Promise Cases"—Gleason L. Archer. WEA F WSAI wgy wwr
 —Tastyest Jesters: "Pep," "Vim" and "Vigor," vocal trio. WJZ WCKY kdka wwr
 6:30—The Bright Spot: Guy Lombardo's Orchestra. WABC WKRC wadc whk wspd wcco kmox wgn
 —Prince Albert Quarter Hour: Alice Joy, contralto; "Ol' Hunch"; Paul Van Loan's Orchestra. WEA F WSAI wgy wwtam wwj wwr
 —Sonata Recital: Mathilde Harding, pianist; Arcadie Birkenholz, violinist. WJZ
 6:45—The Camel Quarter Hour: Morton Downey; Tony Wins; Jacques Renard's Orchestra. WABC WKRC wwva wadc whk wch wspd wlap wowo
 —The Goldbergs: comedy sketch. WEA F WSAI wgy wwtam wwj wwr
 7:00—Laboratory Experiment Series. WABC WKRC wwva wadc whk wch wspd wlap wfbm wcco kmox
 —Ely Culbertson: bridge talk. WEA F WSAI wgy wwtam wwj wmaq

NETWORK PROGRAMS

—Danger Fighters: dramatic program. WJZ WCKY kdka wgar wjr wis kstp
 7:15—Abe Lyman's Orchestra. WABC WKRC wadc whk wspd wfbm kmox wgn
 —Paul Specht's Orchestra. (CBS) wcco
 —Civic Concerts Service Program: Josef Koestner, director. WEA F wwtam wwj wmaq
 7:30—Photoplay's "Screen Personalities." WABC WKRC whk wspd kmox wgn
 —Dan Russo's Orchestra. (CBS) wcco

NETWORK PROGRAMS

—National Advisory Council on Radio in Education: "Technology and Big Business," Narlow S. Person; "The Problem of Working Together," Elton Mayo. WEA F WSAI wgy wwtam wwj kyw kstp whas
 —Dance with Countess d'Orsay: Countess d'Orsay and Le Dandy, soloists; Ben Selvin's Orchestra. WJZ WLW kdka wmaq
 8:00—Vaughn de Leath, songs; Fred Beren's Orchestra. WABC wwva wadc whk wch wspd wlap wcco kmox
 —"K-7": Secret Service spy story. WEA F WSAI wwtam whas
 —Josef Koestner Ensemble; Cyril Pitts, tenor. WJZ WCKY
 8:15—Fray and Braggiotti: Franco-Italian piano duo. WABC wwva wadc whk wch wspd wlap wcco kmox
 8:30—Isham Jones' Orchestra. WABC wwva wadc whk wch wspd wlap wcco kmox
 —Club Valspar: Harold Van Emburgh, baritone; William Wirges' Orchestra. WEA F WSAI wgy wwtam wwj wmaq
 —First Nighter: "The Diamond Makers," mystery drama. WJZ WLW kdka wgar wjr kstp wls
 9:00—Music that Satisfies: Ruth Etting, songs; Nat Shilkret's Orchestra. WABC WKRC wadc whk wch wspd wlap wowo wfbm wbbm wcco kmox
 —Lucky Strike Dance Hour, with Louis Sobol. WEA F WSAI wgy wwtam wwj wls kstp whas
 —The Four New Yorkers: male quartet. WJZ WCKY

NETWORK PROGRAMS

9:15—Columbia Public Affairs Institute. WABC WKRC wadc whk wch wspd wlap wowo wfbm wcco kmox
 —Snoop and Peep: comedy sketch. WJZ wgar wjr
 9:30—Twenty Fingers of Harmony: Mathilde Harding, pianist; Irene Harding, organist. WJZ WCKY kdka
 9:45—The Street Singer: Arthur Tracy. WABC WKRC wadc whk wch wspd wlap wfbm kmox
 —McCravey Brothers: Hearthsides Singers. WJZ
 10:00—Don Redman's Connie's Inn Orchestra. WABC WKRC wwva wadc whk wch wspd wlap wfbm wcco kmox
 —Russ Columbo and his Orchestra: WEA F wttam
 —Slumber Music: Ludwig Laurier's String ensemble. WJZ (WCKY on 10:15)
 —Amos 'n' Andy. (NBC) wmaq wls kstp whas wgar wjr
 10:15—Jesse Crawford: Poet of the Organ. WEA F
 —Prince Albert Quarter Hour. (NBC) kstp whas
 —Tepee Singers: Male quartet; piano duo. (NBC) wmaq
 10:30—Enric Madriguera's Biltmore Orchestra. WABC (WKRC wwva wadc wch wspd wlap wfbm wcco on 10:45)
 —The Camel Quarter Hour. (CBS) wlap wfbm wcco kmox wgn
 —Johnnie Hamp's Hotel New Yorker Orchestra. WEA F wgy wwtam whas
 —Piano Moods: Lee Sims, piano; Ilo May Bailey, songs. WJZ wgar wmaq
 10:45—Ted Cook's Midnight Frolics Orchestra. WJZ wgar
 11:00—Guy Lombardo's Royal Canadians. WABC WKRC wwva wadc wch wspd wlap wfbm wcco
 —Ralph Kirbery: The Dream Singer. WEA F wjr
 —Jack Denny's Waldorf-Astoria Orchestra. WJZ WLW wgar

If We Had Our Own Radio Station

By JACK SNOW

ANNOUNCER:
 Ladies and Gentlemen, we are broadcasting a special program direct from Crooning Crooning Prison on The Hudson. By special permission of the gattyright owners our star prisoner, Al Sapone, will croon a group of two selections, "Prisoner of Love" and "That Old Gang of Mine."

ASK FOR PHOTO

Dot Lee's voice on WFBE nightly at 6 has brought many requests for her photo. She appears on the program of Dr. Lewis' Foundation System of Dentistry.

NETWORK PROGRAMS

11:05—Buddy Rogers' Hotel Pennsylvania Orchestra. WEA F WCKY wgy wwtam on 11:15)
 11:30—Harold Stern's St. Moritz Orchestra. WABC WKRC wwva wadc wch wspd wlap wcco (wfbm on 11:45)
 —Herb Gordon's Wardman Park Hotel Orchestra. WEA F wttam
 —Charlie Agnew's Edgewater Beach Hotel Orchestra. WJZ wjr kyw
Midnight—Noble Sissle's Park Central Hotel Orchestra. WABC
 12:30 A. M.—Paul Tremaine's Villa Richard Orchestra. WABC

New Sextet Scores at WLW



Left to right, Joe Klaus, Milt Weiner, Mark Davission, Joe Lugar (seated), Ross Pierce, Charles Nutick and G. C. Hoskins.

Introducing WLW's most recent musical addition—the WLW Saxophone Sextet. The group features special arrangements of popular melodies, light classics and marches and has already won a wide following in its Tuesday 9:30 p. m. program. Joe Lugar is conductor.

CONTEST ON WKRC

Any home-owner or anyone responsible for upkeep of a rented home is eligible to enter the Acme Home Owner's Word Building Contest, sponsored by Acme Lead & Color Works each Thursday at 11:15 a. m. over WKRC. No contest blanks or labels are required. The person submitting the longest correct list of

four-letter words from "Acme Quality Paint" wins.

IN PERSON

Wally Maher and Jack Zoller, Crosley Theater Players of WLW, will obey that impulse soon and return to the stage for a brief personal appearance tour of the Midwest.

ROLL BACK THE YEARS WITH A FACIAL LIFT!



YOUTHFUL beauty can easily be yours by the Five-Angle Facial Lift (not a beauty parlor or peeling treatment). Permanent and immediate results. Makes you look 10 to 25 years younger. Smooths away wrinkles... restores firm contour to cheeks and chin... lifts loose skin, makes scrawny necks lovely. Eyes made young-looking and beautiful. A beautiful nose in one visit. Ill-shaped ears corrected. Double chin, puffy eyes, age lines, scars, acne pits, moles permanently and painlessly removed by highly skilled specialists with European and American training. Thousands have secured youthful beauty this positive way. Come for FREE consultation and proof, or write for FREE BOOK No. 367. Special Rejuvenation and Feature Corrections.

Cincinnati Facial Studio
 Phone CHerry 0436
 Suite 704-6 Keith Bldg., 523 Walnut
 Office Hours: Daily, 9 A. M. to 6 P. M.
 Sunday, 10 A. M. to 12 Noon
 Evenings, Thursday and Friday, Till 8

FREE RADIO SERVICE
 Complete inspection in your home by an expert Radio Technician. Tubes tested and your radio troubles completely analyzed without obligation. All defective parts replaced by original parts only.
 We absolutely guarantee our work for 90 days. Free service from 9 A. M. to 6 P. M.—Night Calls \$1.00
Cherry 5946
SCHWARTZ RADIO SERVICE SHOP
 Established 10 years
 (Formerly Race Auto & Radio Supply Co.)
LIBERTY AND RACE CINCINNATI

COMPLETE PROGRAMS FOR SUNDAY, MAY 1, ON THIS PAGE

WSAI (225m.—1330 kc.)

11:30 A. M.—International Broadcast (NBC)
1:30 P. M.—Sermonette and Hymn Time
2:00—Wayne King's Orchestra (NBC)
2:30—National Sunday Forum (NBC)
3:00—Totent Program (NBC)
3:15—Marie Powers, contralto
3:30—International Broadcast from Paris (NBC)
4:00—Musicians' Emergency Aid Program (NBC)
5:00—Catholic Hour (NBC)
5:30—Our American Schools (NBC)
6:00—Godfrey Ludlow, violinist (NBC)
6:15—Rexall Radio Party (NBC)
6:30—Orchestral Gems (NBC)
7:00—Chase and Sanborn Orchestra (NBC)
8:00—"Our Government," David Lawrence (NBC)
8:15—American Album of Familiar Music (NBC)
8:45—Buick Revelers (NBC)
9:00—What Would You Do? (NBC)
9:06—Musings (NBC)
9:15—NBC Orchestral Awards (NBC)
10:30—Sunday at Seth Parkers' (NBC)

WFBE (250m.—1200 kc.)

8:00 A. M.—Break of Day
8:30—Concert Hour
9:15—Birthday Party Program
9:30—Invitation to the Waltz
9:45—Emily McGowan, pianist
10:00—Eula and Ruth, harmony girls
10:15—Health Hints
10:30—Vocal Varieties
10:45—Lewis Ensemble
11:00—Excerpts from the Opera
11:15—Ralph Pinkston
11:30—Daily Thought
11:45—Morning Melodies
Noon—Galvano and Cortez
12:30 P. M.—Helen and William, tenor and piano
12:45—Little Concert with Gita Gitell, soprano
1:00—Jewish Community Program
1:30—James A. Dorsey, pianist
1:45—Matinee Melodies
2:00—Bernyce Clemons and Bonnie Miller
2:15—Afternoon Concert
2:45—Melodies of Romance
3:00—The Melody Four
3:15—Afternoon Melodies
3:30—Freda Sanker, pianist
3:45—Progressive Glee Club
4:00—George Hoffman, baritone
4:15—Echoes of Persia
4:30—Betty May, contralto
4:45—Post Symphony Hour
5:45—The Vesper Singer
6:00—Twilight Reveries
6:30—Church Federation Hour
7:00—Emma Methvin and Bernice Sturgard, songs
7:15—With the Scouts
7:30—Sports Review
7:45—Cliff Burns and His Orchestra
8:00—Studio
8:45—Evening Star, Henry Grad, baritone, and Ray Hathorn, pianist
9:00—Dorothy-Gene, string trio
9:15—Cliff Burns and his Orchestra
9:30—In the Gloaming, Glenna Will Newland
9:45—Hy C. Geis, organ recital
10:00—Kentucky Harmony Singers
10:15—Studio
10:30—Nocturne—Lillian Sherman

WKRC (545m.—550 kc.)

6:45 to 7:45 A. M.—God's Bible School—Sunrise Worship
9:00—God's Bible School
10:00—Watchtower—Judge Rutherford
10:15—Jim Lightfield's Veteran Civic Hour
10:55—First Church of Christ Scientist
11:59—Green Time Signal
Noon—American Legion Program
12:45 P. M.—Worthmore—Soup and Chili
1:00—Wallace Silver—Eight Sons of Eli (CBS)
1:30—Columbia Church of the Air (CBS)
2:00—Crane & Breed—"On Wings of Song"
2:15—Jewish Community Program
2:45—Toscha Seidel, violinist (CBS)
3:00—Cathedral Hour (CBS)
4:00—Pastorale (CBS)
4:30—Chicago Knights (CBS)
4:45—Atlas Brew—Bob Becker's Outdoor Tales (CBS)
5:00—The Lost Legion (CBS)
5:30—"Roses and Drums"—Union Central Life Insurance Co.
5:59—Burke Weather Forecast
6:00—Lange Time Signal
6:02—Coney Island Calliope
6:07—Studio
6:15—Red Top Baseball Scores
6:20—Studio
6:30—Alex Haas and his Gypsy Orchestra (CBS)
6:45—Hygrade—The Sylvania's (CBS)
7:00—Nat'l Radio—Berry Crafters
7:15—Monarch Supply Co.—Happy Repairmen
7:30—Greyhound Bus—Highway Traveler (CBS)
7:45—Cream of Wheat—Angelo Patri "Your Child" (CBS)
8:00—Ever-Ready Razor—Jack Denny's Orchestra, and Belle Baker (CBS)
8:30—Pennzoil—Harry Sosnick's Orchestra (CBS)
9:00—Affiliated Products—Edna Wallace Hopper Variety Show (CBS)
9:30—Chrysler—Ziegfeld Radio Show (CBS)
10:00—H. & S. Pogue Co.—69th Anniversary Program
11:00—Horse Shoe Gardens—Harry Willsey
11:30—California Melodies (CBS)
Midnight—Sign off

WCKY (202m.—1490kc.)

11:30 A. M.—Careless Love (NBC)
11:45—Lena Pope
Noon—Eureka Weather Forecast
12:01 P. M.—Waldorf-Astoria Organ Recital (NBC)
12:15—Dr. Belber Quarter Hour
12:30—Soup & Chili, Worthmore Twins
1:00—Silver Serenade
1:20—New Era Sportlight
1:30—Moonshine & Honeysuckle (NBC)
2:00—Friendly Hour (NBC)
2:30—Master Composers
2:45—Kroness Floorshow
3:00—Vesper Services at a Village Inn
3:15—Musical Pictures, Nita Milstead
3:30—Lifetime Revue (NBC)
4:00—Sabbath Reveries
4:30—Messer's Melody Moments
4:45—Stegner's "Snowdrifts," Jack Snow
5:00—Pedro Via's Orchestra (NBC)
5:30—To be announced
6:00—Sing a New Song
6:15—Nightingale Quartette
6:45—Dixie Lee
7:00—College of Music Concert
7:30—Sundodgers
8:00—Teddy Hahn, Jr., Orchestra
8:15—Homer Bernhardt, tenor
8:30—Pays to Advertise
8:59—Enreka Weather Forecast
9:00—Earl Arnold's Flotilla Boys
9:30—Homer Bernhardt
9:45—Florentine Trio
10:00—"Haunted House," Coca Cola
10:15—Archer Gibson Ensemble (NBC)
10:30—Piano Moods (NBC)
11:00—Art Cox Vagabonds
11:30—Milt Stuhlberg's Orchestra—Club Royal

WLW (428m.—700 kc.)

8:00 A. M.—NBC Children's Hour (NBC)
9:00—Church Forum: Reverend O. H. Schmidt
9:30—Fiddlers Three (NBC)
9:45—A Song for Today (NBC)
10:00—Morning Musicale (NBC)
11:00—Organ Recital
11:30—The Rancheros
Noon—May Day Melodies (NBC)
1:00 P. M.—Leslie Howard, Yardley Program (NBC)
1:30—Yeast Foamers (NBC)
2:00—College of Music Recital
2:30—Swift Garden Party (NBC)
3:00—Crosley Theatre of the Air
3:30—Donhallrose Trio
4:00—Plantation Days
4:30—Simoniz Guardsmen (NBC)
5:00—Crosley Choir
5:30—Crosley Roamios
6:00—Curtain Calls
6:15—Florence Wightman, harpist (NBC)
6:30—The Three Bakers (NBC)
7:00—Baseball Scores
7:05—Hotel Gibson Orchestra
7:15—Standing Room Only (NBC)
8:00—Gus Arnheim's Orchestra
8:15—Bayuk Stag Party (NBC)
8:45—"Making the Movies," Ray Knight (NBC)
9:15—The Old Singing Master (NBC)
9:45—Casper Reardon, harpist
10:00—Gus Arnheim's Orchestra
10:30—Moon River
11:00—Wm. Stoess and his Flying Dutchmen (to NBC)
Midnight—Gus Arnheim's Orchestra

Network Programs

Noon—"Builders of America—An Epic of American Labor." William Green, President American Federation of Labor. WABC wvva wadc wlap wcco (wovo on 12:15)
Waldorf-Astoria Organ Recital; Karl Bonawitz, organist. WFAF WCKY wjam (wvj on 12:15)
Special Symphony, directed by Erno Rapee. WJZ WLW wgar whas kdka wjr wmaq kstp
12:30 P. M.—Community Center Faculty Recital. WABC wvva wadc whk wcan wspd wlap wbbm wcco
Pop Concert: Walter Logan, conductor. WFAF wgy wjam wvj whas
1:00—Eight Sons of Eli and Howard Twins: Double quartet and piano duo. WABC WKRC wadc whk wovo wbbm wcco kmox
Yardley Program: Leslie Howard, guest artist; London String Quartet. WJZ WLW wgar wmaq
1:30—Columbia Church of the Air: Most Rev. John Gregory Murray, Roman Catholic Archbishop of St. Paul, Minn. WABC WKRC wvva wadc wlap wcco kmox
Moonshine and Honeysuckle: dramatic sketch. WFAF WCKY wgy wjam wmaq wvj
Yeast Foamers: Herbie Kay's Orchestra; Browning Mummery, tenor. WJZ WLW kdka wgar wjr kyw kstp whas
2:00—Symphonic Hour: Toscha Seidel, violinist; Howard Barlow, conductor. WABC Wvva wadc whk wspd wlap wflm wcco kmox (WKRC on 2:45)
Wayne King's Orchestra. WFAF WSAI wgy wjam wvj kyw
Friendly Hour: "Back to the Garden." Dr. J. Stanley Durkee. WJZ WCKY wgar wmaq kdka
2:30—National Sunday Forum: Dr. Ralph W. Sockman, "Our Mysterious Strength." WFAF WSAI wgy wjam wvj kyw kstp whas
Swift Garden Party: Everett Marshall, tenor guest artist; orchestra. WJZ WLW kdka wgar wjr wmaq
3:00—Cathedral Hour: Channon Collinge, conductor; Adele Vaca, soprano; Barbara Maurel, contralto; Theo Karle, tenor; Crane Calder, bass; the Cathedral Choir. WABC WKRC wvva wadc whk wspd wlap wflm wcco kmox
Totent Program with Jane Froman. WFAF WSAI wgy wjam wvj kyw kstp whas
Songs of Home, Sweet Home: Lucille Long, soprano; Edward Davies, baritone; Merric-men Male Quartet; Chester Pecoraro String Ensemble. WJZ wls wjr kdka wgar
3:15—Marie Powers, contralto; Frank La Forge, pianist. WFAF WSAI whas
3:30—International Broadcast from Paris: "Prom of the French Banker in the World Crisis"—Robert Masson. WFAF WSAI wgy wjam wvj wnr
Sheaffer Lifetime Revue: Navarro Sisters, quartet; Gill and Demling, comedy team; Collegians, male quartet; H. Leopold Spitalny Orchestra. WJZ WCKY kdka whas wnr kstp wjr wmaq
3:45—Partels: poetry with music. WFAF WSAI wgy wjam wvj wnr
4:00—Pastorale: Julia Mahoney, soprano; Crane Calder, bass; Andre Kostelanetz, conductor. WABC WKRC wvva wadc whk wspd wlap wflm wbbm wcco kmox
Musicians' Emergency Aid Program: Schumann-Heink, Pons, Gigli, soloists. WFAF WSAI wgy wjam wvj wnr
Sabbath Reveries: "The Guidance of Life." Dr. Charles I. Goodell. WJZ WCKY wgar wmaq kstp
4:30—Blue Coal Radio Revue: John Barclay, engineer; Mystery Drama, introduced by "The Shadow;" George Earl's Orchestra. WABC
Chicago Knights. (CBS) WKRC wvva wadc whk wspd wlap wflm wbbm wcco kmox
Simoniz Guardsmen: Ernie Holst and his Orchestra. WJZ WLW wgar wjr kyw
4:45—Bob Becker's Outdoor Tales. (CBS) WKRC wadc whk wspd wflm wcco

NETWORK PROGRAMS

5:00—The Lost Legion. (CBS) WKRC wvva wadc whk wspd wlap wflm wbbm wcco kmox
Catholic Hour: "Christ the Citizen." Dr. Ignatius Smith; Rev. Joseph A. Daly; the Mediaevalists. WFAF WSAI wgy wjam wvj wnr kstp whas
Pedro Via's Orchestra. WJZ WCKY wgar wjr
5:30—Beau Brummel of Song: William Vincent Hall, baritone; Jack Shilkret's Orchestra. WABC
Ace Brigode's Orchestra. (CBS) wbbm kmox
Our American Schools: "Teaching Arithmetic." WFAF WSAI wgy wjam wvj whas wnr
Dave Schooler's Music. WJZ WCKY whas
5:45—The World's Business: "Labor Conditions in Europe"—Dr. Julius Klein, Assistant Secretary of Commerce. WABC wvva wadc whk wspd wlap wflm wbbm
Godfrey Ludlow, violinist. WFAF WSAI wgy wjam wvj wnr
Golden Blossoms: Maria Cardinale, soprano; Willard Amison, tenor; Brewer and Poister, piano duo. WJZ WCKY
6:15—Alex Haas and His Gypsy Orchestra. WABC wvva wadc whk wspd wlap wcco (WKRC on 6:30)
Rexall Radio Party: Jerry and Ed, songs and comedy; Andy Sannella's Orchestra. WFAF WSAI wgy wjam wvj wmaq wls kstp
Florence Wightman, harpist. WJZ WLW kdka wgar wjr kyw
6:30—Orchestral Gems: Soloist with symphony orchestra directed by Moshe Paranoff. WFAF WSAI wgy wjam wvj wls
The Three Bakers: Frank Luther, Jack Parker, Darrel Woodyard; Sylvia Froom, contralto; Billy Artz' Orchestra. WJZ WLW kdka wgar wjr kyw kstp whas
6:45—The Sylvania's: Rondoliers Quartet; "The Forty Flying Fingers"; Ernie Golden's Orchestra. WABC WKRC whk wlap wcco kmox wgn
7:00—Ernest Hutcheson, pianist; Howard Barlow Concert Orchestra. WABC wvva wadc whk wspd wlap wflm wbbm kmox
Chase and Sanborn Hour: Harry Richmond, master of ceremonies; Rubino's Orchestra. WFAF WSAI wgy wjam wvj wnr wls (whas on 7:15)
McCravy Brothers: Hearthsidesingers. WJZ
7:15—"S. R. O.—Standing Room Only": "The Show Off," comedy. WJZ WLW kdka wgar wjr kyw
7:30—Highway Traveler. WABC WKRC wadc whk wspd wlap wflm wbbm wcco kmox wgn
7:45—Angelo Patri: "Your Child." WABC WKRC wadc whk wspd wovo wcco kmox wgn

NETWORK PROGRAMS

8:00—Ever-Ready Radio Gaities: Belle Baker; Jack Denny's Orchestra. WABC WKRC wadc whk wspd wovo wflm wcco kmox wgn
Our Government: David Lawrence. WFAF WSAI wgy wnr
Enna Jettick Melodies: Betsy Ayres, soprano; Mary Hopple, contralto; Steele Jamison, tenor; Leon Salathiel, bass; Robert Armbruster's Instrumental Ensemble. WJZ kdka wgar wjr kyw kstp whas
8:15—American Album of Familiar Music: Frank Munn, tenor; Mary McCoy, soprano; Veronica Wiggins, contralto; male quartet; Gurtave Haenschen Orchestra. WFAF WSAI wgy wjam wvj wnr kstp whas
Bayuk Stag Party: male quartet Harrison Knox, Harold Woodward, tenors; Paul Parks, baritone; James Stanley, bass; Ivan Rudisill's Orchestra. WJZ WLW kdka wgar wjr kyw
8:30—Enroute to Pennzoil Parade of Melodies: male quartet; Harry Sosnick, pianist, and his Orchestra. WABC WKRC wadc whk wspd wovo wcco kmox wgn
8:45—Buick Revelers: Countess Olga Albani, soprano; Revelers quartet; James Melton, Lewis James, tenors; Phil Dewey, baritone; Wilfred Glenn, bass; Frank Black Orchestra. WFAF WSAI wgy wjam wvj wnr
Making the Movies: comedy sketch with Raymond Knight, Songsmiths quartet, Robert Armbruster Orchestra. WJZ WLW kdka wgar wjr kyw
9:00—Edna Wallace Hopper Variety Show: stage and screen stars; Kit Kat Club Orchestra. WABC WKRC wadc whk wspd wlap wovo wflm wbbm wcco kmox
What Would You Do?—Albie Booth, "Accomplishment of Ideals." WFAF WSAI wgy wjam wvj wnr kstp whas
9:06—Musings: John Brewster reading poetry, with incidental music. WFAF WSAI wgy wjam wvj wnr kstp whas
9:15—NBC Orchestral Awards—First broadcast of five successful works by American composers. WFAF WSAI wgy wjam wvj kstp whas

NETWORK PROGRAMS

The Old Singing Master: Harry Frankel, Helen Janke, Mary Tibbett, Helen Young, vocalists; male quartet; William Stickle's Orchestra. WJZ WLW kdka wgar wmaq
9:30—Ziegfeld Radio Show: Eddie Dowling, master of ceremonies; Florenz Ziegfeld; Ziegfeld stars, past and present. WABC WKRC wadc whk wch wspd wlap wovo wflm wcco kmox wgn
Archer Gibson Ensemble. WJZ (WCKY on 10:15) wgar wjr wnr
10:00—The Gauchos: Tito Guizar; Hernandez Brothers; Vincent Sorey's Orchestra. WABC wadc whk wch wspd wlap wflm wcco kmox
10:15—Russ Columbo and his Orchestra. WFAF WCKY wgy wvj
10:30—Evening Melodies: Vincent Sorey, conductor. WABC wadc wspd wcco
Sunday at Seth Parkers'. WFAF WSAI wgy wjam wvj wnr kstp whas
Piano Moods: Lee Sims, piano; Ilo May Bailey, songs. WJZ wjr wnr
10:45—Mello 'Cello: Ennio Bolognini, cellist; Josef Koestner, pianist. WJZ kdka wjr wnr
11:00—Eddie Duchin's Central Park Casino Orchestra. WABC wadc whk wspd wlap wflm wcco kmox
Larry Funk's Palais d'Or Restaurant Orchestra. WFAF (wgy off 11:30) (wtam on 11:30)
William Stoess and his Flying Dutchmen. WJZ WLW wgar wjr wnr
11:30—California Melodies: Raymond Paige's Los Angeles Orchestra, with guest stars. WABC WKRC wadc whk wspd wlap wcco kmox

JEAN WITH FLO

Jean Sargent, Philadelphia socialite who hit stardom through Irving Berlin's "Face the Music," will play in all "Ziegfeld Radio Shows" over WKRC (CBS) Sundays at 9:30 p. m., succeeding Ethel Merman.

SUNDAY AT 2

Crane & Breed "Wings of Song" now is heard each Sunday at 2 p. m. over WKRC.

IN THE FAMILY

Ray Perkins, NBC wit, is a brother of Grace Perkins, novelist.



GET rid of that noisy Radio Announcer—be able to instantly shut him out or reduce his voice to a whisper and resume regular volume when he finishes talking. Be able instantly to hush the radio without leaving your chair. If the phone rings—if you wish to make a remark and be heard—to call someone in the next room—or again, you wish to reduce the voice or instrument that is not pleasing to you—fade-out or diminish the volume with a Na-ald Fade-Out. Perhaps you like to read with radio music playing, but are disturbed and bothered when the announcer or a speaker comes on—if so—press with foot or finger the Na-ald Fade-Out. Do this without taking your eyes from your reading, reducing the volume to whatever level you wish. Simple to attach, delightful to use and sold on a money back basis. Cannot injure the set. Mail a dollar bill tonight. Try it. If not more than pleased, return within five days and your money will be promptly refunded. Weighted tapestry strap for use on arm chairs or table clamp that clips to Fade-Out either 25c each. Price of Fade-Out to dealers, servicemen or agents, five for \$3.00. Order today.

ALDEN PRODUCTS CO. Dept. S Brockton, Mass.

Get "Coast to Coast" On Long or Short Wave - Avoid Static Volotone "traps" interference and doubles volume of Distant Stations. Also a Super-Adapter. Easily attached. Write Imperial Lab., 5948 Coke Bldg., Kansas City, Mo., for 20-Day Approval Offer.

JANE GREY and The Kampf Artists Mon., Wed., Fri. 11:45 A.M. Sponsored by The A. W. Kampf Jewelry Co. Diamond Remounting Specialists 18 W Sixth St Cincinnati, O

ONE MORE WEEK Regular \$1.00 F. & H. CAPACITY AERIAL ELIMINATOR 59c AND THIS COUPON Plus 6c Postage This coupon and 59c will purchase one F. & H. Aerial Eliminator. Name Address KRAUSS RADIO STORES 111 E. FIFTH ST., CINCINNATI, O. Mail Orders Promptly Filled.

"On Wings of Song" A SUNDAY CLASSIC Crane & Breed Ensemble 2:00 P. M. WKRC Every Sunday Afternoon

Effarsee ANTENNAE is a WIRE AERIAL INSULATED for INSIDE USE NOT A SUBSTITUTE FOR THE HOME FOR THE AUTO Satisfaction guaranteed or money refunded FISHWICK RADIO 226 E. 8th St., Parkway 0681

COMPLETE PROGRAMS FOR MONDAY, MAY 2, ON THIS PAGE

WSAI (225m.—1330 kc.)

8:00 A. M.—Gene and Glenn (NBC)
8:15—Popular Musicale
8:45—McCormick Fiddlers
9:00—Morning Dance Concert
9:45—Light Classics
10:15—Radio Household Institute (NBC)
10:30—Vocal Selections
11:00—General Electric Circle (NBC)
11:15—Celebrated Compositions
Noon—Dance Selections
12:50 P. M.—Live Stock Reports
1:00—Organ Matinee
1:30—Matinee Favorites
2:15—Happiness Kids
2:30—Musical Forum
3:00—Afternoon Melodies
3:30—Ely Culbertson (NBC)
3:45—To be announced
4:00—Classical Program
4:15—Skippy (NBC)
4:30—Celebrated Compositions
5:00—Crosley Dealers Salute
5:15—Aces of Harmony
5:30—Southern Singers
5:45—Memory Hour
6:00—Happiness Kids
6:15—Everyday Poems, by George Elliston
6:30—To be announced
6:45—Trials of the Goldbergs (NBC)
7:00—Gus Arnheim's Orchestra
7:30—Voice of Firestone (NBC)
8:00—A. & P. Gypsies (NBC)
8:30—General Motors Program (NBC)
9:00—National Radio Forum (NBC)
9:30—Do You Remember? (NBC)
10:00—Russ Columbo Orchestra (NBC)
10:15—Quaker State Program
10:30—Mel Snyder's Orchestra

WFBE (250m.—1200 kc.)

7:00 A. M.—Break of Day
7:15—Musical Clock
8:30—Birthday Greetings
8:45—Morning Concert
9:00—Our Daily Thought
9:15—Hy C. Geis, organ recital
9:45—Gold Nuggets
10:00—Novelty Notes
10:05—Dot's School Children's Popularity Program
10:20—Beauty Notes
10:35—WFBE-RKO Theatre Party
10:50—Mrs. Evans Advice
11:00—Mary and John
11:15—Lyric Program, Musical Varieties
11:30—Beulah Davis, pianist
11:45—Old Southern Melodies
Noon—News in Cincinnati
12:30 P. M.—Studio
12:45—Alfred McCoy
1:00—Good Afternoon Melodies
1:15—Robert Bentley, Children's Hour
1:20—Slumber Songs
1:45—Forgetmenots
2:15—Elinor Hurdle, character sketches
2:30—Rhythm Revue
2:45—Bee Campbell
3:00—Studio
3:30—Frank Aston, Show Windows
3:45—Krescup Erion and Mrs. Chas. Diss, soprano and pianist
4:00—Pirates Club
4:15—Cincinnati Reds vs. St. Louis, at St. Louis
6:15—Northside Musicale
6:30—Dr. Lewis Dentists—Dot Lee
6:45—Lost and Found
6:50—Studio
7:15—Post Question Box
7:30—Sports Review, Harry Hartman
7:40—Knight Klub Knights
7:55—Lost and Found
8:00—Mrs. Adolf Hahn and Audrey Gillespie
8:15—"Dinty" Moore's Scrap Book
8:30—Commissioner's Daughter, WFBE Players
9:00—Luckey Boys
9:15—The Peoples School
9:30—Margaret Sponcel
9:45—Studio
10:00—Port of Missing Sam
10:15—Italian Serenaders
10:30—Nocturne—Lillian Sherman

WKRC (545m.—550 kc.)

6:45 A. M.—God's Bible School—Sunrise Worship
7:45—Chunggold—The Breakfast Club
7:59—Gruen Time Signal
8:00—Raysol—Old Time Singing
8:15—Glays Catron, organist
8:30—Pyol Program
8:45—Cudahy Co.—Old Dutch Girl (CBS)
9:00—Chatting with Ida Bailey Allen (CBS)
9:15—H. & S. Pogue Co.—Jean West
9:30—Consolidated Merchants Program
10:00—Weather—Lange Time
10:03—Woman's Hour—Tremlette Tully
10:30—Queen City Rug Makers
10:45—Ben Alley (CBS)
11:00—Julia Hayes
11:30—Kre-Mel—The Singing Chef (CBS)
11:45—Zorex Program (CBS)
Noon—Cincinnati Paint Club
12:15 P. M.—Model Laundry—Model Romances
12:30—Cincinnati Merchants Program
1:00—Farm Network Program (CBS)
1:15—Sulfox Health Program
1:30—Re-nu Program
1:45—Farm Network Program (CBS)
2:00—Studio
2:15—Burck-Bauer Program
2:30—Sam Prager, pianist (CBS)
2:45—Four Eton Boys (CBS)
3:00—The Captivators (CBS)
3:15—Pyol Program
3:30—Nat'l Student Federation of America Program (CBS)
4:00—Pancho and His Orchestra (CBS)
4:15—Raysol—Howard Hafford, tenor
4:30—Worthmore—Soup and Chili
4:45—Snooks Friedman's Orch. (CBS)
5:00—Main Street Business Men
5:15—Malted Products—Golden Age Organist
5:30—Bunke Weather Forecast
5:30—Cincinnati Trade School—Ruth Reeves
5:45—Stocks—Studio—Weather
5:59—Lange Time Signal
6:00—Wrigley—Myrt and Marge (CBS)
6:15—Red Top Baseball Scores
6:20—Studio
6:30—Lavoris—Easy Aces (CBS)
6:45—Camel—Morton Downey (CBS)
7:00—Linit—The Bath Club (CBS)
7:15—Barbasol—Singin' Sam (CBS)
7:30—La Palina—Kate Smith (CBS)
7:45—Ivory Soap—Colonel Stoopnagle and Budd (CBS)
8:00—Eugene Limited—International Revue (CBS)
8:15—Pillsbury—The Street Singer (CBS)
8:30—Bourjois—An Evening in Paris (CBS)
9:00—Gen'l Cigar—Robt. Burns Panatella Program (CBS)
9:30—Chesterfield—Boswell Sisters (CBS)
9:45—Wurzberg—The German and His Parrot
10:00—Studio
10:05—Howard Barlow and Symphony Orchestra (CBS)
10:15—Maxwell Coffee—Lannie Ross and Don Voorhees (CBS)
10:30—Weather Forecast—Studio
11:00—Isham Jones' Orchestra (CBS)
11:30—Enric Madriguera's Orch. (CBS)

WCKY (202m.—1490kc.)

7:00 A. M.—Kapua's Native Hawaiians
7:15—Morning Devotions (NBC)
7:30—Cheerio (NBC)
8:00—Eureka Weather Forecast
8:01—Morning Eye-Openers
8:15—Cumberland Fiddlers
8:45—Band Music
9:15—Clara, Lu & Em (NBC)
9:30—Coppin's Morning News Flashes
9:45—Vocal Varieties
10:00—Mrs. A. M. Goudiss (NBC)
10:15—Tunes in Blue
10:45—Tommy Ott at Liberty Organ
11:00—Musical Novelties
11:15—Earl Edmonds
11:30—Gene Rupee Fiddlers
Noon—Luncheon Concert
12:25 P. M.—Live Stock Quotations
12:30—Farm & Home Hour (NBC)
1:30—Cincinnati Live Stock Exchange Report
1:35—Musical Interlude
1:45—Geo. W. Hill Pantry tunes
2:00—Ky. Federation of Women's Clubs
2:15—Siesta Musicale
2:45—This 'n' That
3:00—Pop Concert (NBC)
3:30—Matinee Melodies
4:00—Asher Sizemore and Jimmy
4:15—Kapua's Native Hawaiians
4:30—Kapua's Native Hiawians
4:45—Little Orphan Annie (NBC)
5:00—Stegner's "Snowdrifts," Jack Snow
5:15—Waldorf-Astoria Orchestra (NBC)
5:30—Royal Vagabonds (NBC)
5:45—Late Dance Tunes
5:55—WCKY Newsman
6:00—Amos 'n' Andy (NBC)
6:15—Tastyest Jesters (NBC)
6:30—Helen Royce, blues singer
6:45—Jones & Hare (NBC)
7:00—Carnation Milk Program (NBC)
7:30—Death Valley Days (NBC)
8:00—Tommie & Willie, Coca Cola Twins
8:30—It Pays to Advertise
8:59—Eureka Weather
9:00—Art Cox and his Vagabonds
9:15—Club Royal, Milt Stuhlberg
9:30—Waves of Melody (NBC)
9:45—Sundodgers
10:15—Slumber Music (NBC)
10:30—Lee Sims Piano Moods (NBC)
10:45—Cab Calloway's Orchestra (NBC)
11:00—Art Cox Vagabonds
11:30—Milt Stuhlberg's Orchestra—Club Royal

WLW (428m.—700 kc.)

6:30 A. M.—Top o' the Morning
7:00—Morning Exercises
7:15—Morning Devotions
7:30—The Round Table
8:30—Beautiful Thoughts (NBC)
8:45—The Early Burdettes—Exercises
9:00—Child Care and Training, Dr. Ada Hart Arlitt
9:15—A. & P. Dance Orchestra
9:30—"Our Daily Food," Colonel Goodbody (NBC)
9:45—Rit Dry Cleaner Program
10:00—Live Stock Reports
10:10—Musical Interlude
10:15—Threesome, vocal trio
10:30—Talk by Beatrice Fairfax (NBC)
10:45—Layne Mountaineer Fiddlers
11:00—WLW Mail Bag
11:15—Pat Barnes in Person (NBC)
11:30—Seeger Ellis, baritone
11:45—Morin Sisters, vocal trio
Noon—Noonday Musicale
12:15 P. M.—Hotel Gibson Dance Orch.
12:45—Market Reports
12:50—Live Stock Reports
1:00—National Farm & Home Period (NBC)
1:30—Netherland Plaza Dance Orchestra
2:00—United States Marine Band (NBC)
3:00—Old Bill, basso
3:15—Organ Matinee
3:45—Aces of Harmony
4:00—A. & P. Dance Orchestra
4:30—The Singing Lady (NBC)
4:45—The Chatter
5:00—Marcella Uhl, songs
5:15—Happiness Kids, vocal duo
5:30—The Royal Vagabonds (NBC)
5:45—Lowell Thomas (NBC)
6:00—Amos 'n' Andy (NBC)
6:15—Footdown Pops Review
6:30—Mail Pouch Sportsman, Bob Newhall
6:45—Old Man Sunshine
7:00—Peanut Pietro
7:15—Gus Arnheim's Orchestra
7:30—Old Bill and Blue Flame Singers
8:00—Cotton Queen with Hink and Dink
8:30—Canada Dry (NBC)
9:00—San Felice Srenaders (NBC)
9:15—Henry Fillmore's Band
9:45—Alaga Melodies: Jim and Walt
10:00—Gus Arnheim's Orchestra
10:30—Varsity Quartet
10:45—Headlines of Yesterday
11:00—WLW Fanfares
11:30—Carl Moore's Orchestra (NBC)
Midnight—Mel Snyder's Orchestra
12:30 A. M.—Gus Arnheim's Orchestra

Network Programs

6:00 P. M.—Myrt and Marge. WABC WKRC wv a wadc wspd kmox
—Henri Gendron's Orchestra. (CBS) wbbm
—D'Avrey of Paris, songs. WFAF wtam wvj
—Amos 'n' Andy. WJZ WLW WCKY kdka
—The Singing Lady: nursery songs and stories. (NBC) kstp
6:15—Maxwell House Tune Blenders: Lanny Ross, baritone. WABC
—Sonata Recital: Joseph Stopak, violinist; Joseph Honti, pianist. WFAF wtam whas
—Paul Specht's Orchestra. (CBS) wbbm
—Tastyest Jesters: "Pep," "Vim" and "Vigor," vocal trio. WJZ WCKY kdka wvnr
6:30—Easy Aces: bridge comedy skit. WABC WKRC whk wfm wcco kmox wgn
—The Stebbins Boys: comedy sketch, with Parker Fennelly and Arthur Allen. WJZ kdka wgar wjr wvnr kstp
6:45—The Camel Quarter Hour: Morton Downey; Tony Wons; Jacques Renard's Orchestra. WABC WKRC wvva wadc whk wvch wvpc wvwo
—The Goldbergs: comedy sketch. WFAF WSAI wgy wtam wvj wvnr
—Billy Jones and Ernie Hare: songs and patter. WJZ WCKY kdka wgar wjr wvnr wmaq whas
7:00—The Bath Club: All'e Lowe Miles interviewing guest; male quartet: Frank Ventree's Orchestra. WABC WKRC wadc whk wvpc wvfm wcco kmox wgn
—Soconyland Sketches: dramatic sketches. WFAF wgy
—Carnation Contented Program: Gene Arnold, narrator; male quartet: Morgan L. Eastman Orchestra. WJZ WCKY kdka wls kstp whas (wjr on 7:15)
7:15—Singin' Sam, the Barbasol Man. WABC WKRC wadc whk wvpc wvfm wcco kmox wgn
7:30—Kate Smith and Her Swanee Music. WABC WKRC wadc whk wvch wvpc wvlp wvfm wcco kmox wgn
—Voice of Firestone: Lawrence Tibbett, baritone; Harvey S. Firestone, Jr., guest speaker; William M. Daly's Orchestra. WFAF WSAI wgy wtam wvj wvnr wmaq whas
—Death Valley Days: "The Death Valley Kid," dramatic program. WJZ WCKY kdka wgar wls kstp
7:45—The Gloom Chasers. Colonel Stoopnagle and Budd: comedy skit. WABC WKRC wadc whk wvpc wcco kmox wgn

NETWORK PROGRAMS

8:00—Eugene International Revue: guest artist: Sam Lanin's Orchestra. WABC WKRC wadc whk wvpc wvfm wcco kmox wgn
—A. & P. Gypsies: Harry Horlick, director; Frank Parker, tenor. WFAF WSAI wgy wtam wvj wmaq
—Sinclair Wiener Minstrels: minstrel show; Roy Shield's Band. WJZ kdka wgar wjr wls kstp whas
8:15—The Street Singer: Arthur Tracy. WABC WKRC wadc whk wvpc wvwo wcco kmox wgn
8:30—An Evening in Paris: Pierre Bruggnon; Alice Remsen, contralto; Max Smolen's Orchestra. WABC WKRC wadc whk wvpc wvwo wgn
—Parade of the States: Howard Clancy, narrator; Phil Dewey, baritone; male Glee Club; Erno Rapee's Orchestra. WFAF WSAI wgy wtam wvj wvnr kstp whas
—Canada Dry Program: George Olsen's Orchestra. WJZ WLW kdka wjr
9:00—Robert Burns Panatella Program: Guy Lombardo's Royal Canadians; Burns and Allen, comedy team. WABC WKRC wadc whk wvpc wvwo wvfm wbbm wcco kmox
—National Radio Forum. WFAF WSAI wtam: wvj wvnr
—San Felician Serenade: Bob Nolan, master of ceremonies. WJZ WLW kdka wgar wjr wmaq
9:15—Four Boys and a Girl: musical novelty program: Frank J. Novak, Jr., director. WJZ kdka wjr
9:30—Music That Satisfies: Boswell Sisters; Nat Shilkret's Orchestra. WABC WKRC wadc whk wvch wvpc wvlp wvfm wbbm wcco kmox

NETWORK PROGRAMS

—"Do You Remember?"—Kay Donna, contralto; orchestra. WFAF WSAI wgy wvj wvnr
—Waves of Melody: Victor Arden's Orchestra; Tom Brown, tenor. WJZ WCKY kdka wgar wjr kyw
9:45—Arthur Jarrett: songs; Freddie Rich's Orchestra. WABC wadc
—Myrt and Marge. (CBS) wlap wbbm wcco
—The McCravy Brothers: hearthside singers. WJZ kdka wgar wjr
10:00—Howard Barlow and the Columbia Symphony Orchestra. WABC wadc wvch wvpc wvlp wvfm wcco kmox (WKRC on 10:05)
—Russ Columbo and his Orchestra. WFAF WSAI
—Slumber Music: Ludwig Laurier's String Ensemble. WJZ (WCKY wls on 10:15)
—Amos 'n' Andy. (NBC) wmaq wvnr kstp whas wgar wjr
10:15—Maxwell House Tune Blenders: Lanny Ross, baritone. (CBS) WKRC wadc wgn whk wvwo kmox wvpc wvlp wcco
—Jack Denry's Waldorf-Astoria Hotel Orchestra. WFAF wvnr
10:30—Noble Sissle's Park Central Hotel Orchestra. WABC (wadc whk wvch wvpc wvlp wvfm wcco on 10:45)
—The Camel Quarter Hour. (CBS) wlap wbbm wcco kmox wgn
—Piano Moods: Lee Sims, piano; Ilo May Bailey, songs. WJZ WCKY wvnr
10:45—Cab Calloway's Cotton Club Orchestra: Ada Ward, crooner. WFAF WCKY wvj wmaq
—Earl Hines' Grand Terrace Cafe Orchestra. WJZ wvnr
11:00—Isham Jones' Orchestra. WABC WKRC wadc wvch wvpc wvfm wbbm wcco

MYSTERY AT 8:30 P. M.

After starting out at 9:30 p. m. Mondays and being shifted to 8:30 p. m. the following week, "The Commissioner's Daughter," WFBE Players' new serial mystery drama, has decided to keep the 8:30 p. m. spot. The cast includes practically every member of the WFBE Players, with Zenobia Hackett and Robert Bentley in the lead. Important characterizations are also being given by Mabel Juanay, and Edward Briggs.

BY BRASS SEXTET

The Brass Sextet of the Maxwell House Cotton Queen Minstrels will feature an original arrangement of "Massa's in the Cold, Cold Ground" in the Cotton Queen broadcast with Hink and Dink Monday (May 2) at 8:15 p. m. over WLW.

NETWORK PROGRAMS

—Ralph Kirbery: the Dream Singer. WFAF
11:05—Buddy Rogers' Hotel Pennsylvania Orchestra. WFAF wgy (wvnr on 11:15)
11:15—Carl Moore's Hotel Drake Orchestra. WJZ (WLW on 11:30)
11:30—Enric Madriguera's Biltmore Orchestra. WABC WKRC wadc wvch wvpc wvlp wvfm wcco
—Larry Funk's Palais d'Or Orchestra. WFAF WCKY wvnr
Midnight—Claude Hopkins' Roseland Ballroom Orchestra. WABC
12:30 A. M.—Paul Specht's Orch. WABC

"Good Morning—"



ORD RUSH

Ford Rush is heard over your breakfast table from WLW in the new "Round Table" period daily at 7:30 a. m., except Sunday, in an entertaining summary of late news, along with music by Arthur Chandler, Jr., WLW organist; Morin Sisters; Happiness Kids; and the Aces of Harmony.

CHRONIC SUFFERERS
If you have a chronic ailment that has failed to respond—you owe it to yourself to consider seriously the investigation of the NEW and GREATLY improved NATIONALLY FAMOUS (MAGNETIC FLUX) THERONOID
By results only—can you be convinced of its merits. Descriptive literature upon request. Come into the office once or several times and use it free of any obligation.
The "Theronoid"—Must Sell Itself
311 Lyric Theatre Bldg. Main 5679Cin., O.

EXPERT RADIO REPAIRING
Reasonable Prices
Work Guaranteed
BY THE
GUARANTEED RADIO SERVICE CO.
4034 GLENWAY AVE.
Wabash 2300
Free Radio Program Listing Book will be mailed to you on request.

BOYS WANTED
Sell RADIO DIAL and make money. It's easy. Other boys are buying many things with the money they earn selling this interesting weekly of programs and radio news. Why don't you?
WARGO NEWS CO.
629 Central Ave.
Hamilton, Ohio

Watch Repairing
All Makes, including SWISS. Broken parts replaced at cost
Work Done by Experts
Watch Crystals 25c.
American Jewelry Co. 3 E. Sixth St.
MAIn 3267

COMPLETE PROGRAMS FOR TUESDAY, MAY 3, ON THIS PAGE

WSAI (225m.—1330 kc.)

8:00 A. M.—Gene and Glenn (NBC)
8:15—Popular Musicale
8:45—McCormick Fiddlers
9:00—Morning Dance Concert
9:15—Knox Sparkling Music (NBC)
9:30—Musical Forum
10:00—"Your Child" (NBC)
10:15—Radio Household Institute (NBC)
10:30—Odas Mattox
10:45—Light Classics
11:00—General Electric Circle (NBC)
11:15—Celebrated Compositions
Noon—Dance Selections
12:50 P. M.—Live Stock Reports
1:00—Dorothy Kempe, cellist
1:15—Matinee Favorites
2:15—Happiness Kids
2:30—Musical Forum
3:00—Afternoon Melodies
4:00—Classical Program
4:15—Skippy (NBC)
4:30—Celebrated Compositions
5:00—Crosley Dealers Salute
5:15—Sam Wilson, baritone
5:30—Memory Hour
5:45—Happiness Kids, vocal duo
6:00—Midweek Federation Hymn Sing (NBC)
6:15—Talent Bureau Program
6:30—To be announced
6:45—Trials of the Goldbergs (NBC)
7:00—Blackstone Plantation (NBC)
7:30—True Story F (NBC)
8:00—Gay Vienna (NBC)
8:30—Texas Program (NBC)
9:00—Lucky Strike Dance Hour (NBC)
10:00—Mel Snyder's Orchestra
10:30—Gus Arnheim's Orchestra

WFBE (250m.—1200 kc.)

7:00 A. M.—Break of Day
7:15—Musical Clock
8:30—Birthday Greetings
8:45—Morning Concert
9:15—Daily Thought
9:30—Morning Glories
9:45—Prof. Briol, French Lesson
10:05—School Children's Popularity Program
10:20—Walter Wehmier Program
10:35—WFBE-RKO Theatre Party
10:50—Anita Auch, dietitian
11:00—Pabst Musical
11:15—Adelaide Apfel
11:30—Housewives' Frolic
11:45—Dulcy Markham's Songs
Noon—News in Cincinnati
12:30 P. M.—Sara Drucker, pianist
12:45—Kitty Burke, songs
1:00—Good Afternoon Melodies
1:15—Robert Bentley, Children's Hour
1:30—Day Dreams
1:45—Frank Brandstetter
2:00—Rhythm Revue
2:15—Ralph Pinkston, piano
2:30—With the Bandmasters
2:45—Afternoon Melodies
3:00—Little Symphony
3:30—Murdock Williams
3:45—J. B. Baker, basso
4:00—Pirates Club
4:15—Cincinnati Reds vs. St. Louis, at St. Louis
6:15—Dr. Lewis Dentists—Dot Lee
6:30—Margaret Cones, pianist
6:45—Lost and Found
6:50—Studio
7:15—Post Question Box
7:30—Harry Hartman Sport Review
7:40—Eleanor Walker McKay, soprano
7:55—Lost and Found
8:00—The Hoofers
8:15—Meinolf of Tinglehoff (German Song Cycle)
8:30—RKO Stars
9:00—The Luckey Boys
9:15—Western Hills Community Program
9:30—Elaine Ritter, vocalist and pianist
9:45—Evening Dance Frolic
10:00—Studio
10:30—Nocturne—Lillian Sherman

WKRC (545m.—550 kc.)

6:45 A. M.—God's Bible School—Sunrise Worship
7:45—Churngold—Breakfast Club
7:59—Gruen Time Signal
8:00—Raysol—Old Time Singing
8:15—Gladys Catron, organist
8:30—Pyol Program
8:45—Wm. Rogers & Sons—Brad and Al (CBS)
9:00—Prescott—The Grant Trio (CBS)
9:15—H. & S. Pogue Co.—Jean West
9:30—Consolidated Merchants Program
10:00—Main Street Business Men
10:15—Pebeco—Stories of Living Great (CBS)
10:30—Helpful Hints to Housewives
11:00—Ready-to-Bake Program
11:05—Weather Forecast
11:06—Lange Time Signal
11:07—Woman's Hour—Tremlette Tully
11:30—Linit—Mid-Day Bath Club (CBS)
11:45—Sulfox Health Program
Noon—Jane Grey and Kampf the Jeweler Artists
12:15 P. M.—Model Laundry—Model Romances
12:30—Cincinnati Merchants Program
1:00—Wyeths—Aunt Jemima Songs (CBS)
1:15—Re-Nu Program
1:30—Farm Network Program (CBS)
1:45—Queen City Rug Makers
2:00—Studio
2:15—Hippodrome Theatre Contest
2:20—Ann Leaf at the Organ (CBS)
2:30—Musical Americana (CBS)
3:00—Boston Variety Hour (CBS)
3:30—Graves—Musical Shopping Guide
3:45—Pyol Program
4:00—Cincinnati Trade School—Ruth Reeves
4:15—Raysol—Howard Hafford, tenor
4:30—Worthmore—Soup and Chili
4:45—Danderine—Movie Star Revue (CBS)
5:00—Miller Brothers Wall Paper Program
5:15—Malted Products—Golden Age, organist
5:30—Burke Weather Forecast—Stocks—Time Signal
5:45—H. J. Heinz—Joe Palooka (CBS)
6:00—Wrigley—Myrt and Marge (CBS)
6:15—Cisico—The Mills Brothers (CBS)
6:30—Richman Brothers—Sylvia Froos—Silver's Orchestra (CBS)
6:45—Camel—Morton Downey (CBS)
7:00—Linit—The Bath Club (CBS)
7:15—Phillips—Abe Lyman's Orchestra (CBS)
7:30—La Palina—Kate Smith (CBS)
7:45—Gerardine—Ed Sullivan (CBS)
8:00—Premier Malt—Ben Bernie and his Blue Ribbon Orchestra (CBS)
8:30—Harold F. Ritchie—Eno Crime Club (CBS)
9:00—Pratt and Lambert—Voice of a Thousand Shades (CBS)
9:15—Gold Medal Fast Freight (CBS)
9:30—Chesterfield—Alex Gray (CBS)
9:45—Red Top Baseball Scores
9:50—Studio
10:00—Tom Collins, Jr.—Eddie Schoelwer
10:15—Wuest Sleeper Mattress Program
10:30—Weather Forecast—Studio
11:00—Harold Stern's Orchestra (CBS)
11:30—Coon Sander's Orchestra (CBS)

WCKY (202m.—1490kc.)

7:00 A. M.—Kapua's Native Hawaiians
7:15—Morning Devotions (NBC)
7:30—Cheerio (NBC)
8:00—Eureka Weather Forecast
8:01—Morning Eye-Openers
8:15—Gene Rupee's Fiddlers
8:45—Peppy Tunes
9:15—Clara, Lu & Em (NBC)
9:30—Tunes in Blue
10:00—Florence Frey's Beauty Talk
10:15—Vocal Varieties
10:45—Georgia Gay
11:00—Musical Novelties
11:30—Cumberland Fiddlers
Noon—Luncheon Concert
12:25 P. M.—Live Stock Quotations
12:30—National Farm & Home Hour (NBC)
1:30—Cincinnati Live Stock Exchange Report
1:35—Musical Interlude
1:45—Geo. W. Hill Pantry tunes
2:00—Richard Porter, singing pianist
2:15—Siesta Musical
2:30—Moods in Blue
2:45—Schubert Symphony—No 9 in C Major
3:45—Russell Henderly, pianist
4:00—Asher Sizemore and little Jimmy
4:15—Dr. Lewis' Junior Broadcast Club
4:30—Messer Melody Moments
4:45—Little Orphan Annie (NBC)
5:00—Stegner's "Snowdrifts," Jack Snow
5:15—Studio
5:30—"Soup" and "Chili," the Worthmore Boys
5:45—Late Dance Tunes
5:55—WCKY News Man
6:00—Amos 'n' Andy (NBC)
6:15—Radio Dialing with Henry Segal
6:30—Stebbins Boys (NBC)
6:45—Jones and Hare (NBC)
7:00—National Advisory Council on Education in Radio (NBC)
7:30—Tommie & Willie, Coca Cola Twins
8:00—Bob Rainier's Lookout Boys
8:30—It Pays to Advertise
8:59—Eureka Weather
9:00—The Regimentalists (NBC)
9:15—Minstrellettes
9:30—Paris Night Life (NBC)
9:45—Bill Dinkle & Eddie Baer
10:00—Chico 'n' Peppina
10:15—Slumber Music (NBC)
10:30—Charles Dornberger's Orchestra (NBC)
11:00—Art Cox Vagabonds
11:30—Club Royal, Milt Stuhlberg

WLW (428m.—700 kc.)

6:30 A. M.—Top o' the Morning
7:00—Morning Exercises
7:15—Morning Devotions
7:30—The Round Table
8:30—Beautiful Thoughts (NBC)
8:45—The Early Burdettes—Exercises
9:00—Public Library Talk
9:15—A. & P. Dance Program
9:30—"Our Daily Food," Colonel Goodbody (NBC)
9:45—Davis Mystery Chef (NBC)
10:00—Live Stock Reports
10:10—Musical Interlude
10:15—Old Bill
10:30—Through the Looking Glass with Frances Ingram (NBC)
10:45—Layne Mountaineer Fiddlers
11:00—Alaga Melodies: Jim and Walt
11:15—Pat Barnes in Person (NBC)
11:30—Talent Bureau Program
11:45—O' Cedar Melody Men (NBC)
Noon—Tuxedo Entertainers
12:15 P. M.—Hotel Gibson Orchestra
12:45—Market Reports
12:50—Live Stock Reports
1:00—National Farm and Home Period (NBC)
1:30—Netherland Plaza Dance Orchestra
2:00—Talent Bureau Program
2:15—Organ Matinee
2:45—Mormon Tabernacle Choir (NBC)
3:15—U. S. Army Band (NBC)
3:45—Acres of Harmony
4:00—A. & P. Dance Orchestra
4:30—The Singing Lady (NBC)
4:45—The Chatter
5:00—Mary Steele, contralto
5:15—WLW Singers
5:30—Ray Perkins (NBC)
5:45—Lowell Thomas (NBC)
6:00—Amos 'n' Andy (NBC)
6:15—Dog Talk by Dr. Glenn Adams
6:30—Mail Pouch Sportsman—Bob Newhall
6:45—Old Man Sunshine
7:00—Peanut Pietro
7:15—Gus Arnheim's Orchestra
7:30—R. F. D. Hour
7:45—Sisters of the Skillet (NBC)
8:00—Tangee Musical Dreams
8:15—Rhythm Club with Bob Nolan (WJR)
8:30—Kruschen Program
9:00—Vox Humana
9:30—A Quarter Hour of Loveliness
9:45—Southern Singers
10:00—Sohio Program: The Trial of Vivian Ware
10:30—Varsity Quartet
10:45—Headlines of Yesterday
11:00—Los Amigos
11:30—Moon River
Midnight—Gus Arnheim's Orchestra
12:30 A. M.—Mel Snyder's Orchestra

Network Programs

6:00 P. M.—Myrt and Marge. WABC WKRC wvva wadc wspd kmox
—Henri Gendron's Orchestra. (CBS) wbbm
—Mid-Week Federation Hymn Sing: Muriel Savage, soprano; Helen Janke, contralto; Richard Maxwell, tenor; Arthur Billings Hunt, baritone, director. WEF WSAI whas
—Amos 'n' Andy. WJZ WLW WCKY kdka
—The Singing Lady: nursery songs and stories. (NBC) kstp
6:15—Crisco Program: The Mills Brothers. WABC WKRC wadc whk wspd wowo wibm wbbm kmox
—Paul Specht's Orchestra. (CBS) wbbm
—Melody Trail, gypsy music. WEF WSAI wgy wtm wmaq whas
—Just Willie: sketches, songs, stories. WJZ kdka wenr
6:30—Richman Brothers Program: Sylvia Froos, contralto; Louis Silvers' Orchestra. WABC WKRC wvva wadc whk wch wspd wlap wowo wibm wbbm wcco kmox
—The Stebbins Boys: comedy sketch, with Parker Fennelly and Arthur Allen. WJZ WCKY kdka wgar wjr wenr kstp
6:45—The Camel Quarter Hour: Morton Downey; Tony Wons; Jacques Renard's Orchestra. WABC WKRC wvva wadc whk wch wspd wlap wowo
—The Goldbergs: comedy sketch. WEF WSAI wgy wtm wjz wenr
—Billy Jones and Ernie Hare: songs and patter. WJZ WCKY kdka wgar wmaq wjr
7:00—The Bath Club: Allie Lowe Miles interviewing guest: male quartet; Frank Ventree's Orchestra. WABC WKRC wadc whk wspd wfbm wcco kmox wgn
—Blackstone Plantation: Julia Sanderson, Frank Crumit, soloists; Jack Shilkret's Orchestra. WEF WSAI wgy wtm wjz kyw kstp
—National Advisory Council on Radio in Education: "The Party and the Issues." Arthur Krock, New York Times. WJZ WCKY wgar wls kyw
7:15—Abe Lyman's Orchestra. WABC WKRC wadc whk wspd wfbm kmox wgn
7:30—Kate Smith and her Swanee Music. WABC WKRC wadc whk wch wspd wlap wfbm wcco kmox wgn
—True Story: Mary and Bob, dramatic sketch. WEF WSAI wgy wtm wjz kyw
—Little Musicale. WJZ wls
7:45—Gerardine Program: "Broadway's Greatest Thrills," Ed Sullivan; Jack Berger's Orchestra. WABC WKRC wadc whk wspd wfbm wowo kmox wgn
—Harley Parham, Harlam Knights. (CBS) wcco
—Sisters of the Skillet: Eddie and Ralph, songs and dialogue. WJZ WLW kdka wls kstp wgar
8:00—Ben Bernie and his Blue Ribbon Orchestra. WABC WKRC wadc whk wspd wowo wcco wgn
—Gay Vienna: Erno Rapee Orchestra. WEF WSAI wgy wtm wjz wls kyw
—The Household Program: Alice Mock, soprano; male trio; Josef Koestner Orchestra WJZ kdka wjr wmaq
8:30—Eno Crime Club: dramatization of Edgar Wallace mystery, opening episode. WABC WKRC wadc whk wspd wowo kmox wgn
—Jane Carpenter, pianist. (CBS) wcco
—Ed Wynn and the Fire-Chief Band. WEF WSAI wgy wtm wjz wmaq kstp whas
—Great Personalities: Harold Sanford's Orchestra. WJZ WLW kdka wgar wjr wenr
8:45—Isham Jones' Orchestra. (CBS) wcco
9:00—The Voice of One Thousand Shades. WABC WKRC whk wch wlap wfbm wbbm wcco kmox

NETWORK PROGRAMS

Lucky Strike Dance Hour, with Louis Sobol. WEF WSAI wgy wtm wjz wenr whas (kstp off 9:30)
—The Regimentalists: male chorus of sixteen voices; Keith McLeod, director. WJZ WCKY kdka wgar wjr wmaq
9:15—Musical Fast Freight: Eddie Dunderster, Gold Medal Organist; Wheaties Quartet. WABC WKRC wadc whk wspd wowo wfbm wbbm wcco kmox
—The Three Graces: harmony trio. WJZ kdka wgar wjr
9:30—Music That Satisfies: Alexander Gray, baritone; Nat Shilkret's Orchestra. WABC WKRC wadc whk wch wspd wlap wowo wfbm wbbm wcco kmox
—Paris Night Life: Princess Ivanova Obolensky; Madelon de Gist, soprano; Pierre le Kreun, tenor; Bertrand Hirsch's Orchestra. WJZ WCKY kdka wgar wjr kyw
9:45—The Funnyboners: comedy and songs. WABC wadc whk
—Myrt and Marge. (CBS) wlap wbbm wcco
—The McCravy Brothers: hearthside singers. WJZ kdka wgar wjr
10:00—Twenty-Ninth Annual Convention of Religious and Educational Associations. WABC (wadc whk wch wspd wlap wowo wfbm wcco kmox on 10:15)
—Joe Palooka. (CBS) wcco wfbm kmox
—Russ Columbo and his Orchestra. WEF
—Slumber Music: Ludvig Laurier's String Ensemble. WJZ (WCKY on 10:15)
—Amos 'n' Andy. (NBC) wmaq wenr kstp whas wgar wjr
10:15—Opry House Tonight: humorous skit with Warren Wade and Roe Wright. WEF
10:30—Pancho and his Orchestra. WABC
—The Camel Quarter Hour. (CBS) wlap wcco wfbm wgn
—Charles Dornberger's Mount Royal Hotel Orchestra. WEF WCKY wtm wjz (wenr off 10:45)
—Piano Moods: Lee Sims, piano; Ilo May Bailey, songs. WJZ wenr
10:45—Bing Crosby, songs. WABC wadc whk wch wspd wlap wfbm wcco

REMEMBER CHAS. W. NEYER For Your New Home 1980 Baltimore Ave. Cincinnati, O. West 6150

American Women and Krazy Kat Tuesday Feature

"Krazy Kat" jazz pantomime based on the cartoon will be featured in the Musical Americana broadcast over WKRC (CBS) Tuesday (April 26) at 2:30 p. m.
The second half of the presentation will be devoted to the works of American women composers. Rhoda Arnold, Columbia soprano, will offer "Nocturne," the best known of the works of Pearl Curran; "Wild Geese," a composition by Annabel M. Buchanan; and a lie-alike song, "Mother Moon," by Alice Barnett. The program will be concluded with Miss Arnold singing Mana-Zucca's ecstatic spring song, "I Love Life."

NETWORK PROGRAMS

Dancing in Milwaukee. WJZ wgar wenr wlap wfbm wcco
11:00—Harold Stern's St. Moritz Orchestra. WABC WKRC wadc whk wspd wlap wowo wfbm wcco
—Ralph Kirbery: the Dream Singer. WEF wtm
—Earl Hine's Grand Terrace Cafe Orchestra. WJZ kdka wgar wenr
11:05—Johnnie Hamp's Hotel New Yorker Orchestra. WEF wgy
11:30—Coon-Sanders' Orchestra. WABC WKRC wadc whk wch wspd wlap wfbm wbbm wcco
—Seymour Simons' Hotel Teller Orchestra. WEF wtm wjz wenr (kstp on 11:45)
—Charlie Agnew's Edgewater Beach Hotel Orchestra. WJZ wmaq
Midnight—Claude Hopkins' Roseland Ballroom Orchestra. WABC
12:30 A. M.—Paul Tremaine's Villa Richard Orchestra. WABC

UNITED RADIO, INC. 1103 VINE STREET "The House of a Million Parts" We service and repair every make Radio. Cherry 6531

DEAN ADDS "M. C."

Add "M. C." to initials which Dean Yocum is privileged to sign after his name. WLW's "Old Bill" made his debut as "master of ceremonies" in the Peanut Pietro broadcasts—at the request of an official of the program's sponsor, the Planters Nut & Chocolate Co. Now WLW is engaged in answering a flock of enthusiastic letters inquiring into the identity of the deep-voiced "m. c." of Pietro's program.

KAMPF HOUR MOVES

The human interest features that mark Jane Grey's Kampf Artist program, now heard Tuesday and Thursday at 12 noon on WKRC, are drawn from letters received from listeners by Jane Grey, Ruth Reeves, Duane Snodgrass and Howard Hafford are also featured on these Kampf Artist programs.

FRENCH MOVES

Professor Phillippee Briol who has conducted Advanced French over WFBE during the past winter, has changed his time to 9:45 a. m. on Tuesday and Thursday.

Dayton, Xenia and Miamisburg Boys Make Spending Money Selling Radio Dial SEE WILKIE NEWS CO. 125 S. Ludlow, Dayton, Ohio

FO' GIVE ME! FO' GIVE ME!

THE "old maestro" and all the lads beg forgiveness for reminding you that they will be on the air this evening for the alma malta—Blue Ribbon Malt—good, old Blue Ribbon Malt. The best in entertainment is the aim of the old maestro, just as the best in malt is the aim of the makers of Blue Ribbon, so 'elp me.

TUNE IN BEN BERNIE

EVERY Tuesday, 8 P. M. Eastern Standard Time WKRC and CBS

Wherever you go, you find BLUE RIBBON MALT AMERICA'S BIGGEST SELLER

COMPLETE PROGRAMS FOR WEDNESDAY, MAY 4, ON THIS PAGE

WSAI (225m.—1330 kc.)

8:00 A. M.—Gene and Glenn (NBC)
8:15—Popular Musical
8:45—McCormick Fiddlers
9:00—Morning Dance Concert
9:15—Jane Grant's Steero Hour (NBC)
9:30—National Home Hour (NBC)
9:45—Betty Crocker (NBC)
10:00—Keeping Up With Daughter (NBC)
10:15—Radio Household Institute (NBC)
10:30—Vocal Selections
11:00—General Electric Circle (NBC)
11:15—Celebrated Compositions
12:00—Dance Selections
12:50 P. M.—Live Stock Reports
1:00—Ogryn Matinee
1:30—Matinee Favorites
2:15—Happiness Kids
2:30—Musical Forum
3:00—Afternoon Melodies
3:30—Ely Culbertson, bridge expert (NBC)
3:45—To be announced
4:00—Classical Program
4:15—Skiptny (NBC)
4:30—Wayne King's Orchestra (NBC)
4:45—Celebrated Compositions
5:00—Croley Dealers Salute
5:15—Aces of Harmony
5:30—Memory Hour
5:40—Civil Service Talk
5:45—Sutherland Singer
6:00—Memory Hour
6:15—Happiness Kids, vocal duo
6:30—To be announced
6:45—Trial of the Goldbergs (NBC)
7:00—Dig Time (NBC)
7:30—Halvy Stuart Program (NBC)
8:00—Goodyear Program (NBC)
8:30—Mobiloil Program (NBC)
9:30—NBC Artists Service (NBC)
10:00—Gus Arnheim's Orchestra
10:30—Mel Saylor's Orchestra

WFBE (250m.—1200 kc.)

7:00 A. M.—Break of Day
7:15—Musical Clock
8:30—Birthday Greetings
8:45—Morning Concert
9:00—Our Daily Thought
9:15—Hy C. Geis, organ recital
9:45—Gold Nuggets
10:05—Dot's School Children's Popularity Program
10:20—Beauty Notes
10:35—WFBE-RKO Theatre Party
10:45—Better Business Bureau
10:50—Mrs. Evans' Advice
11:00—Mary and John
11:15—Lyric Program, Musical Novelties
11:30—Marion Hemple
11:45—Lola Bruce Smith and Don Cheek
Noon—News in Cincinnati
12:30 P. M.—Studio
12:45—Alfred McCoy
1:00—Good Afternoon Melodies
1:15—Robert Bentley, Children's Hour
1:30—Slumber Songs
1:45—Dedication Program
2:00—Charles Daunt, tenor
2:15—Frank Aston, book review
2:30—With the Band Masters
2:45—Studio
3:00—Galmano and Cortez
3:15—Fritchie and Harrison
3:30—Studio
3:45—Wayne Arbogast
4:00—Pirates Club
4:15—Cincinnati Reds vs. St. Louis, at St. Louis
6:15—Northside Musicale
6:30—Dr. Lewis Dentists—Dot Lee
6:45—Lost and Found
6:50—Studio
7:15—Post Question Box
7:30—Sports Review, Harry Hartman
7:40—Douglas Pinguely, basso; Chas. Glazer, piano
7:55—Lost and Found
8:00—Cliff Burns and His Orchestra—Green Mill
8:15—Larry Wood, piano and songs
8:30—Studio
8:45—Coroline Haupt, soprano
9:00—Lucky Boys
9:15—In the Gloaming, Glenna Will Newland
9:30—Cliff Burns and His Orchestra
9:45—Port of Missing Men—Jeff Davis
10:00—Italian Serenaders
10:15—"Dinty" Moore's Scrap Book
10:30—Nocturne—Lillian Sherman

WKRC (545m.—550 kc.)

6:45 A. M.—God's Bible School—Sunrise Worship
7:45—Churngold—Breakfast Club
7:59—Gruen Time Signal
8:00—Raysol—Old Time Singing
8:15—Gladys Catron, organist
8:30—Pyol Program
8:45—Cudahy Co.—Old Dutch Girl (CBS)
9:00—Prescott—Grant Trio (CBS)
9:15—H. & S. Pogue Co.—Jean West
9:30—Consolidated Merchants Program
10:00—Weather—Lange Time Signal
10:03—Woman's Hour—Tremlette Tully
10:30—Best Foods—Round The World Cooking School (CBS)
10:45—Eugene Limited—Question and Answer Box
11:00—Helpful Hints to Housewives
11:30—Kre-Mel—Singing Chef (CBS)
11:45—Zorex Program (CBS)
Noon—Cincinnati Paint Club
12:15 P. M.—Model Laundry—Model Remances
12:30—Cincinnati Merchants Program
1:00—Wyeths—Aunt Jemima Songs (CBS)
1:15—Miller Wall Paper Program
1:30—Fire Prevention Talks
1:35—Farm Network Program (CBS)
2:00—Burck-Bauer Program
2:15—Charis—Ann Leaf and Ben Alley (CBS)
2:30—Queen City Rug Maker
2:45—Four Eton Boys (CBS)
3:00—Sulfox Health Program
3:15—U. S. Navy Band (CBS)
3:45—Re-Nu Program
4:00—Pyol Program
4:15—Raysol—Howard Hafford, tenor
4:30—Worthmore—Soup and Chili
4:45—Geo Hall's Orchestra (CBS)
5:00—Main Street Business Men
5:15—Maltd Products—Golden Age, organist
5:30—Burke Weather Forecast
5:30—Cincinnati Trade School—Ruth Reeves
5:45—Stocks—Studio
5:52—Weather Forecast
5:55—Lange Time Signal
6:00—Wrigley—Myrt and Marge (CBS)
6:15—Red Top Baseball Scores
6:20—Studio
6:25—Coney Island Calliope
6:30—Lavoris—Easy Aces (CBS)
6:45—Camel—Morton Downey (CBS)
7:00—Linit—The Bath Club (CBS)
7:15—Barbasol—Singin' Sam (CBS)
7:30—La Palma—Kate Smith (CBS)
7:45—Ivory Soap—Stoopnagle & Budd (CBS)
8:00—Gen'l Mills—Gold Medal Fast Freight (CBS)
8:15—To be announced
8:30—Harold F. Ritchie—Eno Crime Club (CBS)
9:00—Chesterfield—Ruth Eting (CBS)
9:15—Hillick's Milk—Adventures In Health—Dr. Herman Bundesen (CBS)
9:30—Society Clothes—Society's Playboy (CBS)
9:45—Wurzberg—The German and His Parrot
10:00—Howard Barlow (CBS)
10:15—Maxwell Coffee—Lannie Ross and Don Voorhes (CBS)
10:30—Weather—Studio
11:00—Eddie Duchin's Orchestra (CBS)
11:30—Ben Pollack's Orchestra (CBS)

WCKY (202m.—1490kc.)

7:00 A. M.—Kapua's Native Hawaiians
7:15—Morning Devotions (NBC)
7:30—Cheerio (NBC)
8:00—Eureka Weather Forecast
8:01—Morning Eye-Openers
8:15—Cumberland Fiddlers
8:45—Band Music
9:00—Beatrice Mabie (NBC)
9:15—Clara, Lu & Em (NBC)
9:30—Coppin's Morning News Flashes
9:45—Tunes in Blue
10:15—Vocal Varieties
10:30—Tommy Ort, organ
10:45—Sweetheart Program
11:00—Musical Novelties
11:30—Gene Rupee's Fiddlers
Noon—Luncheon Concert
12:25 P. M.—Live Stock Quotations
12:30—National Farm & Home Hour (NBC)
1:30—Cincinnati Live Stock Exchange Report
1:35—Vocal Varieties
1:45—Pietro Zervos, pianist
2:00—Siesta Musicale
2:30—Moods in Blue
3:00—Larry Topper at Piano
3:15—Kampus Kutups
3:30—Wurlitzer Music School of Air
4:00—Asher Sizemore and little Jimmy
4:15—The Interpreters
4:30—Jimmy and Edith
4:45—Little Orphan Annie (NBC)
5:00—Stegner's "Snowdrifts," Jack Snow
5:15—Dr. Belber's Quarter Hour
5:30—Royal Vagabonds (NBC)
5:45—Late Dance Selections
5:55—WCKY News Man
6:00—Amos 'n' Andy (NBC)
6:15—Debutantes
6:30—The Stebbins Boys (NBC)
6:45—Jones and Hare (NBC)
7:00—Showboat Boys
7:15—Willys—Overland Silver Streaks (NBC)
7:30—Tommie & Willie, Coca Cola Twins
8:00—Radio Guide News
8:15—Bill & Audrey
8:30—Pays to Advertise
9:00—Teddy Hahn Orchestra
9:30—Gustave Haenschen's Orch. (NBC)
9:45—Bill Dinkel and Eddie Baer
10:00—WCKY's Crackers
10:15—Rochester Civic Orchestra (NBC)
10:30—Bob Rainier's Orchestra from Lookout House
11:00—Art Cox's Vagabonds
11:15—Club Royal, Milt Stuhlberg
11:30—Club Royal

WLW (428m.—700 kc.)

6:30 A. M.—Top o' the Morning
7:00—Morning Exercises
7:15—Morning Devotions
7:30—The Round Table
8:30—Beautiful Thoughts (NBC)
8:45—The Early Burdettes—Exercises
9:00—Recipes by "Max"
9:15—A. & P. Dance Orchestra
9:30—"Our Daily Food," Colonel Goodbody (NBC)
9:45—Rit Dry Cleaning Program
10:00—Live Stock Reports
10:10—Musical Interlude
10:15—Threesome, vocal trio
10:30—Talk by Beatrice Fairfax (NBC)
10:45—Layne Mountaineer Fiddlers
11:00—WLW Mail Bag
11:15—Pat Barnes in Person (NBC)
11:30—Harmonica Bill and High Noon
11:45—Morin Sisters, vocal trio
Noon—Hotel Gibson Dance Orchestra
12:30-12:40 P. M.—Old Bill
12:45—Market Reports
12:50—Live Stock Reports
1:00—National Farm and Home Period (NBC)
1:30—Nederland Plaza Dance Orchestra
2:00—Talent Bureau Program
2:15—Organ Matinee
2:45—Words and Music
3:00—Midweek Musicale (NBC)
3:30—Parody Man
3:45—Aces of Harmony
4:00—A. & P. Dance Orchestra
4:30—The Singing Lady (NBC)
4:45—The Chatter
5:00—Marcella Uhl, songs
5:15—Elliot Brock, violinist
5:30—Louis John Johnen, baritone
5:45—Lowell Thomas (NBC)
6:00—Amos 'n' Andy (NBC)
6:15—Just Willie
6:30—Mail Pouch Sportsman—Bob Newhall
6:45—Old Man Sunshine
7:00—Peanut Pietro
7:15—Mel Saylor's Orchestra
7:30—Jack Frost's Melody Moments (NBC)
8:00—Adventures of Sherlock Holmes (NBC)
8:30—Canada Dry (NBC)
9:00—San Felice Serenaders (NBC)
9:15—Crosley Dealers Nite Club
9:45—Alaga Melodies: Jim and Walt
10:00—Curtain Calls
10:30—Varsity Quartet
10:45—Headlines of Yesterday
11:00—Crosley Theatre of the Air
11:30—Benny Kyte's Orchestra (NBC)
Midnight—Mel Saylor's Orchestra
12:30 A. M.—Gus Arnheim's Orchestra

Network Programs

6:00 P. M.—Myrt and Marge. WABC WKRC wva wad wsd kmox
—Henri Gordon's Orchestra. (CBS) wlbm
—D'Avrey of Paris, songs. WFAF wmaq whas
—Amos 'n' Andy. WJZ WLW WCKY kdkk
—The Singing Lady: nursery songs and stories. (NBC) ktp
6:15—Maxwell House Tune Blenders: Lanny Ross, baritone. WABC
—Paul Specht's Orchestra. (CBS) wbbm
—Intermezzo: concert orchestra. WFAF WSAI wgy wtam wmaq
—Esso Program: Robert L. Ripley, "believe-it-or-not!" Harry Salter's Orchestra. WJZ kdkk
6:30—Easy Aces: bridge comedy sketch. WABC WKRC whk wlbm wcco kmox wgn
—The Stebbins Boys: comedy sketch with Parker Fennelly and Arthur Allen. WJZ WCKY kdkk wgar wjr wenz kstp
6:45—The Camel Quarter Hour: Morton Downey; Tony Wons; Jacques Renard's Orchestra. WABC WKRC wva wad whk wcah wcpd wovo
—The Goldbergs: comedy sketch. WFAF WSAI wgy wtam wjz wjr
—Billy Jon's and Ernie Hare: songs and patter. WJZ WCKY kdkk wgar wjr wmaq whas
7:00—The Bath Club: Allie Lowe Miles interviewing guest; male quartet; Frank Ventree's Orchestra. WABC WKRC wad whk wcpd wlbm wcco kmox wgn
—Big Time: Johnny Hart, humorous sketch; Joseph Bonime's Orchestra. WFAF WSAI wgy wtam wjz wls
—American Taxpayers League Program. WJZ wmaq
7:15—Sing'n' Sam, the Barbasol Man. WABC WKRC wad whk wcpd wlbm wcco kmox wgn
—Willys-Overland Silver Streaks: Retting, Platt, Hoefel and Stokes, piano quartet; Tom, Dick and Harry, vocal trio. WJZ WCKY kdkk wgar wjr wmaq kstp whas
7:30—Kate Smith and her Swance Music. WABC WKRC wad whk wcpd wlbm wcco kmox wgn
—Halsey Stuart Program: the "Old Counsellor;" orchestra. WFAF WSAI wgy wtam wjz kstp
—Jack Frost Melody Moments: Joseph Pasternack's Orchestra; Oliver Smith, tenor. WJZ WLW kdkk wgar wjr wls
7:45—The Gloom Chasers. Colonel Stoopnagle and Budd. WABC WKRC wad whk wcpd wcco kmox wgn
8:00—Musical Fast Freight: Eddie Dunderstedt; Gold Medal Organist; Wheaties Quartet. WABC WKRC wad whk wcpd wlbm wcco kmox wgn
—Goodyear Program: Grace Moore, soprano; Revelers quartet; David Mendoza Orchestra. WFAF WSAI wgy wtam wjz kstp whas
—Adventures of Sherlock Holmes: dramatic sketch with Richard Gordon, Leigh Lovel and Joseph Bell; Graham Harris' Orchestra. WJZ WLW kdkk wgar wjr wmaq

NETWORK PROGRAMS

8:15—The Columbians: male quartet; Freddie Rich Orchestra. WABC
8:30—Eno Crime Club: dramatization of Edgar Wallace mystery, conclusion of Tuesday's story. WABC WKRC wad whk wcpd kmox wgn
—Paul Specht's Orchestra. (CBS) wcco
—Mobiloil Concert: Gladys Rice, soprano; Lewis James, tenor; Nat Shilkret's Orchestra. WFAF WSAI wgy wtam wjz wjr wls
—Canada Dry Program: George Olsen's Orchestra. WJZ WLW kdkk wgar wjr kyp
9:00—Music That Satisfies: Ruth Eting; Nat Shilkret's Orchestra. WABC WKRC wad whk wcah wcpd wlbm wbbm wcco kmox
—Coca Cola Program: Irvin S. Cobb, "The Kentucky Derby;" guest interviewed by Grantland Rice; Gustave Haenschen's Orchestra. WFAF WSAI wgy wtam wjz wjr kstp whas
—San Felician Serenade: Bob Nolan, master of ceremonies. WJZ WLW kdkk wgar wjr wmaq
9:15—Adventures in Health: Dr. Herman N. Bundesen, Health Commissioner of Chicago. WABC WKRC wad whk wcpd wovo wbbm wcco kmox
—McClavy Brothers: Hearthiside Singers. WJZ
9:30—Society's Playboy Hour: Welcome Lewis, contralto; Nat Brusloff's Orchestra; Norman Brokenshire, master of ceremonies. WABC WKRC wad whk wcpd wlbm wcco kmox

NETWORK PROGRAMS

—NBC Artists' Musicale: Cesare Sodro Orchestra. WFAF WSAI wgy wtam wjz wjr kstp
—Gustave Haenschen's Orchestra: Frank Munn, tenor. WJZ WCKY kdkk wgar wjr kyp
9:45—The Street Singer. Arthur Tracy. WABC wad
—Myrt and Marge. (CBS) wlap wbbm wcco
—The Pickens Sisters: Jane, Helen and Marla, harmony trio. WJZ kdkk wgar wjr
10:00—Howard Barlow and the Columbia Symphony Orchestra. WABC WKRC wad whk wcah wcpd wlbm wbbm wcco kmox
—Nellie Revell: interview. WFAF wgy wtam wjz
—Slumber Music: Ludwig Laurier's String Ensemble. WJZ
—Amos 'n' Andy. (NBC) wmaq wenz kstp whas wgar wjr
10:15—Maxwell House Tune Blenders. (CBS) WKRC wad wga whk wovo kmox wcpd wlap wcco
—Jesse Crawford, Poet of the Organ. WFAF
—Rochester Civic Orchestra. WJZ WCKY
10:30—Don Redman's Connie's Inn Orchestra. WABC (wad wcah wcpd wlbm wbbm wcco on 10:45)
—The Camel Quartet Hour. (CBS) wlap wovo wlbm wcco kmox wgn
—Vincent Lopez' Hotel St. Regis Orchestra. WFAF wgy wjz wjr
—Studio Ensemble. WJZ

NETWORK PROGRAMS

10:35—Jane Froman and her Orchestra. WJZ wgar wmaq
10:45—Ted Cook's Midnight Frolics Orchestra. WJZ wgar wenz
11:00—Eddie Duchin's Central Park Casino Orchestra. WABC WKRC wad wcah wcpd wlbm wcco
—Ralph Kirbery: the Dream Singer. WFAF wgy wtam wenz
—Cab Calloway's Cotton Club Orchestra: Ada Ward, crooner. WJZ kdkk wgar
11:05—Buddy Rogers' Hotel Pennsylvania Orchestra. WFAF wgy wtam wenz
11:30—Ben Pollack's Orchestra. WABC WKRC wad wcah wcpd wlbm wbbm wcco
—Charlie Agnew's Edgewater Beach Hotel Orchestra. WFAF WCKY kyp
—Benny Kyte's Golden Tower Orchestra. WJZ WLW kdkk wgar wjr wenz
Midnight—Claude Hopkins' Roseland Ballroom Orchestra. WABC
12:30 A. M.—Snooks Friedman's Paramount Orchestra. WABC

Green Will Open Sunday Talks By Labor on May 1

Organized labor will broadcast a series called "Builders of America—An Epic of American Labor" each Sunday at 1 p. m. beginning May 1 over Columbia.

President William Green of the American Federation of Labor will speak that day on "Labor's Contribution to American Civilization." Sponsors are the National Advisory Council on Radio in Education and the Workers' Education Bureau.

ALICE IS HERE

The original Alice in Wonderland will be heard during a Lewis Carroll Centenary program to be broadcast from Columbia University, New York, Wednesday (May 4) at 3:05 p. m. over NBC-WJZ. Students and faculty will have as their guest 80-year-old Mrs. Alice Liddell Hargreaves, to whom Lewis Carroll first told the story of Alice in Wonderland. She traveled more than 7,800 miles to appear on the program. The feature will be opened with music from Edgar Stillman-Kelley's suite from "Alice in Wonderland," by a chorus of 120 girl's voices from Barnard and Hunter colleges, and a Columbia orchestra.

"LAND O' NOD"

"Land o' Nod" is the title of the Wednesday 7:30 p. m. program featured by Tommie and Willie, the Coca Cola Twins. On this one evening a week Tommie and Willie forsake their merry-making and go serious. The Land o' Nod program is a feature of the "sweet" type and brings many old favorite songs to the microphone by this popular WCKY team.

SCOTCH AND IRISH

Arthur Chandler, Jr., popular WLW organist, will feature old Scotch and Irish melodies in his half-hour recital over WLW Wednesday (May 4) at 2:15 p. m.

Quick Printers
CHerry 0710-1-2
S. ROSENTHAL & CO. Established 1868

LESTER SINGER RADIO SERVICE CO.
Cincinnati's Best Equipped Radio Service Station
All Makes of Radios Serviced
Power Packs and Sound Equipment
2032 Madison Road Cincinnati, O. Woodburn 3788

QUEEN CITY RADIO SERVICE CO.
We specialize on R.C.A., PHILCO, MAJESTIC, VICTOR, BRUNSWICK and ATWATER KENT Service and parts on Brunswick, Bremer-Tully and General Motors
626 Broadway CHerry 2440

33 CENTS Is All You Pay For the Original Steamboat Boat Store Coffee
CONSOLIDATED BOAT STORE 326 MAIN, CINCINNATI, OHIO

