

RADIO DIAL

Volume I, No. 16

FRIDAY, SEPTEMBER 4, 1931

Price 5c

Coney Island Has Radio Show Until Sept. 13

President Hoover, Labor Leaders to be Heard

1932 Radio Receivers are Inexpensive

Low Prices, Big Values are Features of New Sets Displayed

Anne Pennington Rests Her Twinkling Feet in Radio Debut



Although she is best known as a dancer, Ann Pennington, diminutive musical comedy star, will reveal her little-known voice to radio listeners during the broadcasting of Vitality Personalities over WKRC and the Columbia network on Wednesday (September 9) at 9 p. m. The program will mark her debut as a singer over the air. She will sing "That's Love" from the current edition of George White's Scandals.

Outstanding radio talent will be presented from Station WHK, Cleveland, when the program, "WHK Entertains," is heard over the Columbia network Tuesday (September 8) at 9:30 p. m., to celebrate the dedication of the Cleveland station's new and completely modern studios. Try WHK (1390 kc.) or WABC

Tons of Music

Five tons of music stored in the NBC basement in New York must be catalogued and filed in the main music library, which already includes more than 100,000 pieces of music.

Hoover Will Speak From White House

Gov. Franklin Roosevelt, John Barton Payne Also Honor Red Cross

President Hoover will speak by radio at the fiftieth anniversary celebration of the founding of the first chapter of the American Red Cross, to be held in Dansville, N. Y., Wednesday (September 9).

Speaking from the White House, the President's voice will be heard at 12:30 p. m. on both NBC and CBS, with WLW and WKRC as outlets. In Dansville, those attending the celebration will listen to the President through a public address system.

Governor Franklin D. Roosevelt of New York, and Judge John Barton Payne, chairman of the American Red Cross, also will speak on the program direct from the celebration.

NBC Will Attempt Broadcast From Parisian Church

From the cloisters of the new American Church on the Quai d'Orsay in Paris, the National Broadcasting Company will attempt to pick up and re-broadcast music and speeches during a dedicatory reception at the new edifice Monday (September 7). The international program is scheduled to be heard at 8 p. m. and probably will be broadcast by WLW.

During the reception there will be a recital by Marcel Dupre, one of the greatest organists of the world, and addresses by attending notables, including U. S. Ambassador Walter E. Edge, W. M. Taylor, president of the American Chamber of Commerce, and Robert Davis, director of the American Library in Paris.

Don and Betty Are Broadcasting Again

Don and Betty, who mingle some valuable home decorating tips with the story of their non-toe-smooth romance, return to the air Friday (September 4) at 9:15 a. m. for a new weekly series of adventures. WKRC takes the program from Columbia.

Labor Leaders Will Broadcast Messages Monday

William Green, president of the American Federation of Labor, will deliver his annual Labor Day address at 3:30 p. m. Monday (September 7) over an NBC network including WSAI, speaking from the Ottumwa (Ia.) Labor Day and Homecoming celebration.

Frank Morrison, secretary of the Federation, will be heard through WLW at 1 p. m. when he addresses a gathering of some 200,000 unemployed gathered at Soldiers' Field in Chicago.

Mabley & Carew, WKRC Will Give Break to Talent

Want to be a radio entertainer? WKRC and the Mabley & Carew Company have joined forces to give some fortunate talented person a chance to try out for a position with the Columbia Broadcasting System, with which WKRC is associated.

Wednesday, September 9, at 5:15, WKRC will begin broadcasting a series of Mabley & Carew programs, which will be presented by volunteer entertainers who apply to WKRC for the opportunity to display their talents on the air. Anyone may apply to the station except its employees and employees of the Mabley & Carew Company. The programs will be daily except Sunday at the same time. Night programs will be on the air on Monday at 9:30, Wednesday at 9:15, and Friday at 9:45, beginning September 14.

Music critics will listen to all the programs and will choose the one person they deem most likely to be a national radio success. This entertainer will have all expenses paid to New York for the network position. Runners-up probably will be given places on local radio programs.

Hopeful Stakes to Go on Air This Week at WKRC

A description of the Hopeful Stakes, the feature event of the closing day of the racing season at Saratoga, N. Y., will be presented over WKRC at 3:15 p. m. Saturday (September 5).

The race is expected to attract the pick of the two-year-olds. The race is over six and one-half furlongs.

Latest developments in radio receiving sets at low prices setting an all-time record are on display this week (September 3 to 13) at Coney Island in a radio show sponsored by the Radio Wholesalers' Association of Greater Cincinnati.

Lining the main promenade from the Coney Island boat landing to the dance hall are brilliantly decorated booths in which are displayed the newest models of 18 radio manufacturers. In size, the 1932 sets range from midgets that can be carried about like smoking stands to magnificent photograph-radio combinations. All kinds of furniture models are displayed: desks, end tables, console tables with rounded fronts, tables with dials in the top or concealed in drawers. Clock models are drawing particular attention both for practicality and for beauty of tone created by the columnar speakers. New tubes and circuits are interesting the technically minded.

Sunday afternoon, beginning at 2:30, the Radio Derby will be raced on a nine-mile course up the Ohio from Broadway to Coney Island. Twenty onboard motorboats, each named for a different make of radio, will be the contestants.

March of Time Returns to Air On September 11

The March of Time, that news magazine's dramatization of important news events, on Friday (September 11) at 7:30 p. m., will begin a new series of weekly broadcasts through WKRC and the Columbia network.

The Indian Conference in London and the Disarmament Conference at Geneva in February, 1932, are among the news events of great importance which The March of Time plans to "humanize" in the coming season. Carefully selected actors, true-to-the-letter script, and appropriate sound effects will be used to give vivid reality to the news events.

At last the telephone-vs.-radio problem has been solved by an automatic radio-tel switch, which shuts off the radio when the telephone receiver is removed from the hook, and turns the set back on when the receiver is hung up. It's just been put on the market.

Weekly RADIO DIAL

Published every Thursday by the Radio Dial Publishing Co., 22 East 12th St., Cincinnati, Ohio. Contents copyrighted.

Entered as second class matter July 29, 1921, at the post office at Cincinnati, Ohio, under the Act of March 3, 1879.

NATALIE GIDDINGS, Editor

VOL. I SEPTEMBER 4, 1931 No. 16

Pentodes, Variable-Mus and Superhets

Now that the radio manufacturers have brought out their fall lines of receivers, fandom is once more asking its perennial question, "What are the new sets like?" It is a pleasure for Radio Dial to answer with the opinion that the 1931-2 models now on display at Coney Island represent another gratifying advance in radio values.

As usual, the trade has much to talk about this fall in the technical department: pentode tubes, variable-mu tubes, and the superheterodyne circuit. But far from being mere five-dollar words, these things mean a great deal in the way of better receiver performance.

The remarkable new pentode tube truly takes the place of two former tube types. The equally striking variable-mu assures greater sharpness on local stations as well as improved automatic volume control. And the superheterodyne circuit is, of course, already famous for its fine selectivity and sensitivity.

As to cabinets, the midjet is still very much in the picture. In fact, a wide variety of interesting designs makes the small receiver more intriguing than ever.

But the console has not been relegated to the background. On the contrary, a broader range of sizes and styles is certain to enhance its appeal.

Then there is a charming array of housings incorporating receivers in grandfather's clocks, writing desks, bookcases, etc. The double usefulness of these models will make them hard to resist.

However, most soothing of all to the sensitive pocket nerve is the news that prices continue low. Indeed, the veterans at the business do not hesitate to say that, value for value, this year's radio dollar is buying more than at any time they can remember.

Altogether, the 1931-2 models have considerable of keen interest to offer those who go shopping for new receivers.

PROGRAM JOTTINGS

Friday, September 4

Old Reliable Songs will have its program premier on WLW at 7 p. m. It will be presented by an orchestra and a mixed sextet including Mary Steele, Harriet Wellen, Louis John Johnen, John Dodd, Wilson Lane and Franklin Bens. William C. Stoess will conduct.

Mary Lawler, stage star ("Good News", "Follow Thru," etc.) will be the Nestle guest star at 7 p. m. on WLW and WKCY.

The Columbia Symphony orchestra will play an all-Massenet program through WKRC at 7:30 p. m.

The Settlement School of Music quartet will sing Negro spirituals at WKCY at 7:45 p. m.

"Call Me Darling," a new German waltz, will be heard on the air for the first time in the Pond program on WSAI at 8:30 p. m. Leo Reisman's orchestra is featured.

"Casey" Jones will report the opening of inter-airport service in the New York area and will discuss the National Air Race results when he speaks on the Friendly Five Footnotes through WKRC at 8:45 p. m.

Mother's Memory Quilt will have its premier at WKRC Dayton (1300 kc.) at 11:30 p. m. A "slumber" type program.

Saturday, September 5

The new D'Orsay program has its premiers on WLW and other NBC stations at 7:30 p. m. Ben Selvin will conduct an orchestra playing in the moderate tempo Europeans are dancing to this season. "Valentine," which Maurice Chevalier sang on the air several times last spring, is the European dance tune to be featured this week.

"Wedded and Parted," an English society drama in four acts, adapted from Edward Goddard's play, "By Force of Love," will be produced in Hank Simmons' Show Boat (WKRC) at 9 p. m.

Sunday, September 6

Ralph Witherby, tenor soloist at Christ Church, will sing at WFBE at 12:45 p. m.

Barbara Fones Neely and Dorothy Stolzenbach Payne play a two-piano recital for the faculty concert of the Cincinnati College of Music at WLW at 6:30 p. m. Their first number will be the Strauss "Blue Danube Waltz."

Angelo Patri's talk on "Your Child," scheduled by the Columbia network for broadcast on WKRC on Monday and Tuesday nights, will be broadcast instead at 7:45 p. m. on Sunday. The Thursday night programs, also at 7:45 instead of 7:30 as originally scheduled, will not be broadcast by WKRC until October. In the meantime, try WABC (860 kc.) or WOV (1160 kc.).

Monday, September 7

Two baseball games will be broadcast Labor Day by WFBE with Harry Hartman at the microphone. The morning game begins at 10:45; the afternoon at 2:45.

A sketch dealing with the history of the Ohio Military Institute will be broadcast by WLW at 5:40 p. m. Other sketches in the series will be heard at 6:25 p. m. Tuesday and 4:55 p. m. Thursday this and succeeding weeks.

"The Voice of Firestone" will return to the air on WSAI at 7:30 p. m.

Louisville, Ky., will be saluted by WLW at 7:30 p. m., in its Fanfare. Elliott Brock's military band will play.

What happens to Georgiana Billinger on board a yacht off New London in Long Island Sound will be re-enacted by the Eng Crime Club (WKRC) at 8 p. m. The solution of

the mystery will be given at 8:30 Wednesday night (September 9).

Martha Atwood, operatic soprano, will be guest soloist on the General Motors program at 8:30 p. m. on WSAI.

Tuesday, September 8

Dr. Frank H. Vicitelly, editor of Funk and Wagnalls Standard Dictionary, will defend American speech in a talk to be heard through WKRC at 4:15 p. m.

Tommy Ott, returned to WKCY from a brief vacation, will exercise his nimble fingers in piano novelties at 7 p. m.

"Grandpa" of Red Goose Adventures has returned from a vacation in his native Minnesota with a new collection of frontier tales. He will tell one at 7:30 p. m. through WKRC.

A melody from the current "Follies" and a melody of very old tunes will be a feature of the Star Brand program at WKRC at 9:15 p. m.

Hink and Dink, end men of the Crosley Burnt Corkers, will appear with the Werk Bubble Blowers at 8:30 p. m. They will be on the program every week.

Wednesday, September 9

Kaltenborn Edits the News will be broadcast by WKRC at 7:30 p. m. The speaker, K. V. Kaltenborn, world traveler, economist, editor, has spent the summer interviewing leading figures of Europe in preparation for his radio talks. After September 15, WKRC probably will have the program every Tuesday and Thursday at 6:30 p. m.

Duke Ellington and his Cotton Club orchestra will broadcast at 10 p. m. through WLW from the formal opening of the Greystone Ballroom in Music Hall.

Thursday, September 10

Dr. Royal S. Copeland, United States Senator from New York since 1923, even more widely known as a medical columnist, will broadcast a health talk at 9 a. m. every Thursday on WKRC and Columbia. Before being elected to the Senate, Dr. Copeland was Commissioner of Public Health and president of the Board of Health of New York City.

John Charles Thomas sings his final Maxwell House concert at 8:30 p. m. WHAS (890 kc.) carries it.

The Peters Parade has begun its new fall series on the Columbia network at 9:45 p. m. Thursdays and can be heard through WKRC. Appearing are Irene Beasley, contralto; the Ken Christie Trio, and Victor Young's orchestra.

Bing Crosby is Signed by CBS For Daily Act



Bing Crosby, noted by phonograph buyers for the intriguing quality of his "torch" ballads, has just signed an exclusive contract with the Columbia Broadcasting System.

It is current gossip in radio circles that Columbia, expecting to build Crosby into its own Rudy Vallee (an NBC contract artist), is paying him \$1,500 a week to sing on sustaining programs (those not paid for by a sponsor buying time). The figure at which CBS expected to hold Crosby is said to have been \$350 a week. Competitive bidding ran the price up before he so much as appeared on the air.

Columbia's president, William S. Paley, was on a steamer bound for Europe in search of radio talent when he heard a Crosby record for the first time, the story goes. Before he landed in Europe, he had located the young singer in California making pictures and had opened negotiations for his engagement.

Crosby has been given the 10 p. m. period on Columbia every day except Sunday, thus taking his place with Morton Downey and Kate Smith in number of appearances. WKRC has him booked now only on Monday and Wednesday.

Ralph Haburton, at WLW almost nine years as announcer, program manager, and most recently manager of the artist bureau, has left the station to give all his time to booking theater engagements for Bradley Kincaid, mountain ballad singer.

Around the Dial

By THE DIAL TWISTER

Bob Newhall's "In The Bag" column (WLW, Saturday at 10:45 p. m.) makes something good still better. Another shrewd piece of interest-getting business. Gives the sports fans a chance to do their broadcasting bit. And do they like to? Ask the mail man.

Those Friendly Five Footnotes (WKRC, Friday at 8:45 p. m.) sound like a winner. Casey Jones and flocks of other famous flyers. Aviation is sure-fire these days. Strange the program architects haven't thought of that long ago.

The Chase and Sanborn Hour (WSAI, Sunday at 7 p. m.) puts on a highly dialable popular show. Much applause being heard for Dave Rubino's slick orchestra. And his violin solos of current times ranks as real gems with this listener.

Louise Ryder (WKCY, Thursday at 8:30 p. m.) does a mighty satisfying program. Unusually pleasing contralto. Well chosen numbers, besides.

That Dutch Masters feature, Columbia edition (WKRC, Sunday at 8 p. m.) holds its own in the entertainment department. Notice the liberal sprinkling of old-time songs? They're making a real comeback. For instance, the repeat hit being scored by "Shine On Harvest Moon." Don't be surprised to find more of them coming to life.

Kellogg Slumber Music (WLW, Sunday at 8:45 p. m.) earns increasing respect and admiration, though the new hour is a bit early for Morpheus. Fine type of concert music. Always sure of a large and appreciative audience.

Ted Weems goes commercial in the new Best Sellers program (WSAI, Sunday at 9:15 p. m.). Lots of friends hereabouts since he played one of the downtown hotels. Orchestra slick as wax. Sponsor can copy that one, at regular rates.

NBC has a new feature. Danger Lines of History (KDKA, Tuesday at 8:30 p. m.) that's worth a listen. Interesting and well handled dramatizations of international highspots. History's been getting

an earned rest since it was overworked a year or so ago. Which makes the revival more welcome.

Vitality Personalities (WKRC, Wednesday at 9 p. m.) can be labelled "Who's Who on the Air." Will be a complete catalogue of the radio celebs by the time it's finished. Lively stuff, too.

That trio working part-time on the Variety program (WLW, daily at 10:30 p. m.) bears acquaintance. Quite enjoyable. The right kind of music for the hour, if you ask the Dial-twister.

Lawson's Hawaiians (WKCY, Wednesday at 7:45 p. m.) are more evidence that the steel guitar is far from out. An able outfit of its kind. Pleasing programs.

Dr. Glenn Adams (WLW, Thursday at 8:30 p. m.) gets better and better. Irresistible enthusiasm. Makes you like dogs in spite of your neighbors' beasts.

So Weber and Fields have been taken over by Lucky Strike (WSAI, Tuesday, Thursday and Saturday at 9 p. m.). Well, of course you can't keep two such good men off the air. They're helping the "Adam's Apple Hour," too.

Even royalty goes in for announcing now; for instance, "Princess Unspellable," on the Paris Night Life act (WLW, Monday at 8:45 p. m.). Probably a tremendous thrill for society column fans. But for mere males—

That Modern Male Chorus (WKRC, Thursday at 9 p. m.) is a sweet carlin. Fine massed voices. Rich deep harmonies. A welcome change from the usual kind of thing.

More WLW Weddings

WLW's marriage epidemic (17 staff members married in less than a year) broke out again last week with the marriages of James Leonard to Anne Propter, and Richard Schenk to Marie Heyob. Both Leonard and Schenk are members of the technical staff of the station.

Don't Go Wrong With Radio

Radio entertainment costs you nothing. It's worth just about that much, too, unless you know what is good on the air. The best is yours at the turn of the dial if you keep informed of the stations you want to hear.

Radio Dial brings you all the information about time changes, new programs, pick of the air. Six months for only \$1. Send in the attached coupon and Radio Dial will be in your mail box every Thursday with programs, news, pictures for the week.

RADIO DIAL
22 E. 12th Street
Cincinnati, Ohio

Gentlemen:

Enclosed find One Dollar (\$1). Send RADIO DIAL for 6 months.

New Subscriber Renewal

Name
Address
City..... State.....

Letter Box

Radio Dial is interested in the opinions of its readers. It will endeavor to answer questions. Unsigned letters will not be considered but signatures will be withheld when the request is made.

Radio Dial:
What was the matter with "The Goldbergs" program at WSAI on Friday, August 28?
A. B. R.

WSAI log reports that bad interference on New York lines from NBC was apologized for by Chicago NBC announcer after first two minutes of period. Chicago filled with music, then New York put dialogue on lines again and both music and dialogue reached WSAI.

For Miss A. B. Hamilton: Clayton McMitchen, with Bert Layne, and Hoyt Bryant will be at WLW after Monday (September 7). The Skillet Lickers' name remains at WCKY with Riley Puckett, Gid Tanner, and two Georgia musicians just arrived: "Bill" Red Richardson, and "Fiddlin' Bill" Helms.

For Mrs. J. B. S.: WFBE seems to have lost track of Corinna C. Curran. Radio Dial will continue to search for her address. This note may bring word from her.

The All Girls Radio Club of Cincinnati numbers 32 members who "absorb many evenings listening to local stations," according to Miss Agnes Schenck, secretary. Esther Covington and Jack Hersch, Little Red Riding Hood, and Henry Thies are their favorites. For All Girls Radio Club these answers: Esther Covington is not married. Jack Hersch is; has a son 11 months old. Both entertainers are under 30, and white. Henry Thies is between 35 and 40; has a son 18. Picture of Thies will soon be in Radio Dial. Little Red Riding Hood celebrated her fifth birthday July 6.

M. B. M. nominates as best radio singers, Charlie Dameron, Morton Downey, and Ford Rusli. F. G. W. of Covington thinks the best announcers are L. A. Witten, McNamee, Frank Knight, Milton J. Cross, Marie Sherris, Harry Bonnelle, and Norman Brokenshire. R. M. Y. likes Richard Pavey best for classical programs.

For C. W. W.: See answer to Miss A. B. concerning Skillet Lickers.

Mrs. E. J. W. of Covington, Ky., says she knows of "people both old and young who tune in on WSAI to hear Henry Ring sing off." She wants him put where she can hear him all the time.

Compensation

Old Man Depression has done a lot of nasty things to bank accounts and incomes, but he must be credited with introducing values in radio receivers. Herman Theuman, manager of the Sutcliffe Co. of Ohio, doesn't worry so much about depression when he thinks of the Atwater-Kent radios his company distributes. He has nine new models to show at the Radio Show this week, all of them super-heterodynes, and some of them selling at just half the price of last year. Static reducers, tone control, and automatic volume control are the gageets Mr. Theuman is pointing out to visitors.

If We Had Our Own Radio Station

By JACK SNOW
ANNOUNCER:
Ladies and Gentlemen of the radio audience, at this time we are happy to present the program of Dr. I. Twisten, Chiropractor.
We open this program of snappy melodies with the theme song, "That's How I Feel About You."

Wife Will Tell How She Cooks for "Nize Baby" Gross



Milt Gross, famous for "Nize Baby," "Hiawatta Wit' No Other Poems," and other Jewish dialect stories and poems, once interviewed on the subject of feminine perfection, said, "De perfect leddy knows what exists no delicatessen stores."

His further views on what a perfect lady should know about cooking will be revealed by his wife on Tuesday morning (September 8) at 9 o'clock through WSAI and other NBC stations when she is interviewed by Winifred Garter in the Crisco program. Mrs. Gross will tell how she cooks her husband's favorite dish.

This picture shows Gross decorating a door in his home with pictures from the "Hiawatta" book for the entertainment of Mrs. Gross and the three little Grosses.

Motion Picture Stars Will Join in Gay Fiesta

Virtually all the motion picture celebrities will parade before the microphone together during La Fiesta de Los Angeles which WLVW will broadcast from the NBC network Tuesday night (September 8) at 11:30 as part of the sesqui-centennial celebration of the founding of Los Angeles.

Choice Wood

Ray P. Harten, of the Harten-Kniodel Distributing Company, is all hoop-de-doo about the new Zenith models he is showing at the radio show at Coney Island this week. He gets pretty technical on the subject of the cabinets for the receivers and explains that in the million-dollar Zenith cabinet plant the wood in the cabinets is selected for resonant qualities the same as for making fine violins.

CBS Asks For New Booster in Washington, D. C.

Application has been made by the Columbia network to the Radio Commission for permission to operate an experimental 300-watt "booster" station in Washington, D. C., to synchronize 17 hours daily with WABC, its key station in New York City.
Columbia expects to use a sky-wave-suppressing antenna, consisting of a single tower 665 feet high, to avoid interference between WABC and the booster within the normal rural service range of the parent station. If its system of synchronization works, William S. Paley, CBS president, says it will help conserve the nation's broadcasting channels.

D'Orsay Program To Give European Dance Suggestion

Borrowing a chapter from continental dance life, an NBC network including WLW will broadcast the D'Orsay program at 7:30 p. m. every Saturday beginning this week (September 5).

Ben Selvin, for years leader of New York club orchestras and musical director of the Columbia Phonograph Company, will lead the orchestra, which will play new and old popular melodies in the moderate tempo currently popular with European dancers. Audrey Marsh, soprano, will appear as "Countess D'Orsay," and John Hale, tenor, will sing as "Le Dandy." Each week a new European dance tune will be introduced. September 5, "Valentine," popularized by Maurice Chevalier, will be featured.

Duke Ellington Will Broadcast

Famed Duke Ellington and his Cotton Club orchestra will broadcast from the formal opening of the Greystone Ballroom through WLVW at 10 o'clock Wednesday night (September 9). Reputed to be "the hottest band in the world," Ellington and his orchestra were used in "Check and Double Check" with Amos 'n' Andy, and by Maurice Chevalier in his first Broadway appearance. Tony Scheffer, manager of the Greystone, also expects to have Cab Calloway, another Harlem product whose music is famous, at a later date for the ballroom and to be heard on WLW.

Proud

It's a big jump from the mammoth buildings at the approaching Chicago World's Fair to the midget radio set. Yet when Philco planned its 1932 radio line, it called in Norman Bel Geddes, consulting designer of the World's Fair Buildings, scenic artist and painter, to design the cabinets. The result is that E. G. Flagg of the Tri-State Ignition Corporation is doing a lot of pointing with pride at the new Philco receivers he has on display this week at the Coney Island radio show. Philco struck another homer in the design of the Lazboy, an end-table sized set with the tuning dials in a shallow recess in the table top instead of in the side.

Our Dially Dozen

By DON BECKER

Going to Chicago made me sick. I found I was all wrong about Jane Froman and Don Ross being married.

They are not.
However, just to prove the power of the press, after having read an account of their marriage in Radio Dial, Jane and Don decided to save me from embarrassment. They will be married this Fall.

"How are the acoustics?" the Georgia Skillet Lickers of WCKY are reported to have asked the manager of a Kentucky theater they played last week.

"Oh, mostly kids in the afternoon. We have all the grown folks at night," he answered.

This column would be louder and funnier if the neighbor's radio cat hadn't kept me awake last night.

Why a radio cat?
It has a variable mew.

DID YOU KNOW—

That Clara and Lou are married? Ein is single. They write their own script.

That Amos 'n' Andy have been broadcasting from their summer cottage at Lake Geneva?

I didn't write this column? The editor took it down as I yawned it over the telephone. My vacation was too much for me. Oh, yes, that's why there was no column last week—MY VACATION.

DIALAUGHLINGLY YOURS,
DON BECKER.

You Should Know --- Welcome Lewis



Not only in the days of Shakespeare, but before and after, people have been trying to find out what's in a name, and now the sleuths have been at work on the strange case of Welcome Lewis. Not that any one would suggest she isn't welcome, but simply because such a praenomen (yes, it's in the dictionary) as hers is not often bestowed.

The explanation, attested by numerous affidavits, is that Mrs. Lewis had eight children already, and when the subject of this essay was born, she was so glad to have another girl that she called her "Welcome." Now her family call her "Babe," and her friends "Half-Pint," for the simple reason that Welcome hasn't grown very much since her world debut.

Yes, a miniature person. This Miss Lewis, despite the power of her deep contralto voice (hear her in Coty Melody Girl at 8:15 p. m. Thursday, WKRC). In the highest of high heels, she is just five feet. And when she steps on a scale, the hand barely points to ninety pounds.

If, as the psychologists say, a child naturally selects its future work when quite young, she proved that her vocation would be a musical one when she was twelve. At that age she had an orchestra of her own, composed entirely of her school mates. She was the first violinist, conductor and vocal soloist, and she earned many pennies for the trinkets she couldn't coax her parents into buying. This was in California, and whenever the mothers of the neighborhood wanted to find their offspring they had only to go to the Lewis backyard. There the kids would be found listening to the Welcome Lewis Orchestra.

Personal Radio

Your radio should be as personal as your tooth brush. A. H. Schrage, president of the Fisler-Aesebach Company, is telling radio buyers who come near his display of American Boschl radios this week. The American Bosch has put out a Personal Radio series of sets small enough to fit anywhere in the house. Mr. Schrage recommends one for a table near the man's easy chair, one for the children's room, another for the kitchen, and others for the guest room and the game room.

New Line

J. E. Schuster, president of the Schuster Electric Company, is at the Radio Show this week with Majestic radios, a line new to him. His line has seven new models, varying in size from a midget superheterodyne to a 10-tube super-het with twin speakers. The new models have spray-shielded tubes, twin power detectors, and modulated circuits.

Short Wave Set

Stewart-Warner's prize set this year is a combination receiver for standard broadcasts and short-wave reception. This enables listeners to pick up broadcasts direct from foreign countries, ship transmitters, airplanes, amateur transmitters, and television stations. The set is a "natural" for those who crave to listen to police transmitters like the local WDKU. Stanley Isaacs, local distributor, is pleased that the price of the combination in a full-size console is lower than many midget sets.

Furniture

Looking at the General Motors exhibit of radio sets at Coney Island reminds one of the man who had to send for a radio service man to find his set after his wife bought a desk model. General Motors radios are installed in furniture ranging from small end tables to period design reproduction of chests of drawers. There also are more orthodox radio cabinets.

NBC Sends Hard to Geneva; Will Review League

William Hard, Washington newspaper correspondent and veteran broadcaster, has been sent to Geneva, Switzerland, by the National Broadcasting Company to broadcast from there daily reviews of the activities of the League of Nations. In 1930 Hard broadcast reports of the London Naval Conference from abroad. Times for the League broadcasts will be announced as soon as Hard reaches Europe.

FRIDAY
September 4

WKRC (545 m.—550 kc.)

A. M.—
7:00—The Crooning Guitarist.
7:15—Morning Devotions (NBC)
7:30—Cherio (NBC)
8:00—Hot Shot, the Briarhopper.
8:15—Early Morning Dance.
9:15—Light Concert Music.
9:45—Dance Melodies.
10:30—Classic Hour
11:00—Musical Novelties
11:30—Skillet Lickers.
Noon—Popular Dance Tunes
P. M.—
12:30—Norris Brock Live Stock Reports
12:35—Luncheon Program.
1:00—Sign off.
5:15—Dance Music.
6:00—Amos 'n' Andy (NBC)
6:15—Italian Serenades.
6:30—Little Red Riding Hood.
6:45—Tommy and Willie.
7:00—Nestle's Program (NBC)
7:30—Esther Covington.
7:45—Settlement School of Music Quartet.
8:00—Interview Pair (NBC)
8:30—Duke, His Uke and His Sisters.
8:45—Mrs. Walter Miller, Soprano.
9:00—Earl Arnold's Orchestra from Lookout House.
9:15—Skillet Lickers.

WFCB (250 m.—1200 kc.)

A. M.—
7:00—Bamboo Boys.
7:30—Morning Frolic
8:00—Concert Hour
9:00—Lee Richards.
9:15—Sunshine Special
9:45—Kleeman Home Clats
10:00—Musical Brevités
10:30—Mrs. Evans' Questions and Answers
11:00—Shopping with Betty and Bob
11:30—Dance Frolic
11:45—Norky Trio
Noon—Tri-State Philco Program
P. M.—
12:15—Violin and Piano Varieties
12:30—How It Began
12:45—Bellonby Luncheon Musicale
1:00—Story-Telling Time
1:15—Little Black Joe
1:30—Matinee Musicale
2:00—Novelty Notes
2:30—Dance Frolic.
3:45—Reds vs. Chicago, at Redland Field
5:00—Tea Time Tunes
5:30—Moods in Blue
6:00—Musical Interlude
6:30—Dinner Music
6:45—Berning Ford Travelogue
7:00—The Post Question Box
7:15—Fred Schenke Program.
7:30—Harry Hartman's Sport Review
7:45—Republican Campaign Committee
8:00—Lucky Boys
8:15—Dry Ridge Health Hints
8:30—Julius Senit
8:45—Song Hit Time
9:00—Evening Chimes.
9:15—Mountain Red
10:00—Dream Fantasy

WKRC (545 m.—550 kc.)

A. M.—
6:45—God's Bible School
7:45—Blue Ridge Red.
7:50—Green Time Signal
8:00—Starr-Freeze Melodies
8:15—The Commuters (CBS).
8:30—Tony's Scrap Book (CBS).
8:45—The Old Dutch Girl (CBS)
9:00—Oxol Feature (CBS)
9:15—Consolidated Merchants Prog.
9:45—Don and Betty (CBS).
10:00—Rhythm Kings (CBS).
10:15—Feraline Talk
10:20—Rhythm Kings (CBS).
10:30—Charles W. Reaume
11:00—Time and Weather.
11:03—Woman's Hour—Tremlette Tully
11:30—Columbia Revue (CBS).
11:45—Jane Grey and "Kampf the Jeweler." Artists.

**SALT AND PEANUTS
SONG BOOK**

Our 27 favorite comedy songs and ballads
Words, Music, Ukulele Chords
50c
Address
Salt and Peanuts at Mt. Healthy, Ohio

WKRC Friday, September 4

Noon—Blackberry Dudes.
P. M.—
12:15—Enric Madriguera's Cuban Orchestra (CBS).
12:30—Cincinnati Merchants.
1:00—Fabst-ett Varieties (CBS)
1:15—Studio Feature.
1:30—Pyol Program.
1:45—Blue Ridge Red.
2:00—Charles W. Reaume.
2:15—Burr-Backer Program.
2:30—Julia Hayes.
3:00—Rhythm Ramblers (CBS).
3:15—Saratoga Races (CBS).
3:45—Nat. Golf Tournament (CBS).
4:15—A. L. Fink Program.
4:45—Edna Wallace Hopper (CBS).
5:00—A. O. Rust—Happy Feet.
5:15—Studio.
5:30—Cincinnati Trade School.
5:45—Studio.
5:50—Eureka Baseball Scores
5:55—Sports Review
5:59—Buck Weather Forecast
6:00—Kate Smith (CBS)—Home Furniture Company.
6:10—Stocks, Collie & Tyree
6:15—Time and weather.
6:15—Limit Program, with Dennis King (CBS)
6:30—Red Nichols Orchestra (CBS).
6:45—Camel Quarter-Hour (CBS)
7:00—Pryor's Crema Band (CBS).
7:15—Barbasol Program (CBS)
7:30—Republican Campaign.
7:45—Play in Cincinnati, by Dr. Glenn Adams.
8:00—Liberty Magazine (CBS).
8:45—Friendly Five Foot Notes (CBS).
9:00—Pillsbury Pageant (CBS).
9:30—Cincinnati & Lake Erie.
9:45—Around the Samovar (CBS).
10:00—Pyol Program.
10:15—Orun Answer Man
10:30—Coney Island Orchestra.
11:00—Time: Weather; Sports
11:08—Red Nichols Orch. (CBS).
11:30—Studio.
11:45—Jos. R. Deins Program, Pat Gillick, Organist.

WLW (428 m.—700 kc.)

A. M.—
6:30—International Fiddlers and Salt and Peanuts
7:00—Physical Exercises
7:15—The Sambirds (NBC)
7:45—Morning Devotions
8:15—Bradley Kincaid
8:30—Vard Trail Blazers (NBC)
8:45—Physical Exercises
9:00—Ray Perkins (NBC)
9:15—Famous Chef Recipes
9:30—Household Hints
9:45—Premium Man
10:00—Live Stock Reports
10:10—Don Becker
10:15—A. & P. Orchestra
10:30—Colonel Goodbody
10:45—Vi Zay Talk
10:55—Moto Ironing Time
11:15—Swift Program (NBC)
11:30—WLW Stars
11:45—River Reports; Time Signals
Noon—Tuxedo Fiddlers
P. M.—
12:15—Hotel Gibson Orchestra
12:45—Market Reports
1:00—Live Stock Reports
1:00—National Farm and Home (NBC)
1:30—Netherland Plaza Orchestra
2:00—Organ Matinee
2:30—Chicago Serenade (NBC)
3:00—Jim and Walt
3:15—Georgian Strollers and Robert West
3:30—Cello Recital
3:45—Grab Bag Boys
4:00—A. & P. Orchestra
4:30—The Hotentots

WLW Friday, September 4

5:00—Words and Music
5:30—Old Man Sunshine
5:45—Lowell Thomas (NBC)
6:00—Amos 'n' Andy (NBC)
6:15—Madame Aida (NBC)
6:30—Phil Cook (NBC)
6:45—The Chatter.
7:00—Old Rival Singers
7:30—Netherland Plaza Orchestra
7:45—Sisters of the Skillet (NBC)
8:00—Ronnery String Quartet.
8:15—Iceyast Jamboree
8:30—Hotel Gibson Orchestra
8:45—Armour Program (NBC)
9:00—Hreatrolatum
9:30—Clara, Lu and Em (NBC)
9:45—Wilderson's Wildcats.
10:00—Evening Moods
10:30—Variety
10:45—Bob Newhall Sport Slices
10:58—Estate Weather Man
11:00—Vox Celeste
11:30—Castle Farm Orch. (to NBC)
Midnight—Hotel Gibson Orchestra
12:30—Castle Farm Orchestra.

WSAI (225 m.—1330 kc.)

A. M.—
8:00—Gene and Glenn (NBC).
8:15—Records.
8:45—A. & P. Program (NBC).
9:00—Mrs. Blake's Radio Column (NBC).
9:15—Records
9:30—National Home Hour (NBC)
9:45—McCormick's Fiddlers.
10:00—Records.
10:30—Realities of Romance (NBC)
11:00—Hellman Troubadours (NBC).
11:15—Sign Off.
P. M.—
12:50—Livestock Reports
1:00—Sign Off
2:00—Woman's Radio Review
3:00—Records
3:45—Crosley Dealers' Salute.
4:00—Records
4:30—Moore Paint Prog. (NBC).
4:45—Records.
5:00—Poems by Harry Holcome.
5:15—Don Becker.
6:00—Harry Wilson's Orchestra
6:30—Children's Stories.
6:45—The Goldbergs (NBC)
7:00—Cities Service Concert (NBC)
8:00—Clequot Club (NBC)
8:30—Pond's Dance (NBC)
9:00—Kodak Week End (NBC)
9:30—RKO Theater (NBC).
10:00—Records
10:15—The Stebbins Boys (NBC)
10:30—Hotel Gibson Orchestra
11:00—Sign Off.

**SATURDAY
September 5**

WCKY (202m.—1490 kc.)

A. M.—
7:00—The Crooning Guitarist.
7:15—Morning Devotion (NBC)
7:30—Cherio (NBC)
8:00—Hot Shot, the Briarhopper.
8:15—Early Morning Dance.
9:15—Light Concert Music.
9:45—Little Red Riding Hood's Kid-Id Club.
10:30—Classic Hour
11:00—Musical Novelties
11:30—Skillet Lickers.
12:30—Popular Dance Melodies
P. M.—
12:30—Norris Brock live stock quo-
12:35—Luncheon music.

YOU MAY BE A RADIO STAR!

Enter the MABLEY & CAREW Radio Contest, starting next week.

Go to MABLEY'S for your application blank. You will be given an audition before the mike at WKRC—and assigned to broadcast over the air. Open to men, women and children.

Sing or play popular, semi-classical or classical music. Tell all your friends and neighbors to hear you. This is the biggest radio contest ever held in the Middle West. Don't miss it!

Hear the programs every day (except Sunday) from WKRC at 3:15 to 5:30 P. M. beginning September 9. Also Monday nights at 9:30 to 9:45—Wednesday nights, 9:15 to 9:30—and Friday nights, 9:45 to 10:00, beginning September 14.

HAYDN R. EVANS
Radio Advertising
705 Fountain Square Building

WCKY Saturday, September 5

1:00—Sign off.
5:45—Dance Music.
6:00—Amos 'n' Andy (NBC)
6:15—Tastyest Jesters (NBC)
6:30—Eucile Fox.
6:45—Hitch Hikers.
7:00—Rudy Vallce (NBC).
7:30—Showboat Boys.
7:45—Crooning Guitarist.
8:00—Skillet Lickers.
8:30—Bob Sidell and Dave Young.
8:45—Hot Shot the Briarhopper.
9:00—Earl Arnold's Orchestra from Lookout House.
9:30—"Audition Nite" on the Air.

WFCB (250 m.—1200 kc.)

A. M.—
7:00—Morning Frolic.
8:00—Concert Hour.
9:00—Tennessee Jeff.
9:15—Sunshine Special
9:45—Kleeman Home Chats
10:00—Musical Brevités
10:50—Women and the News
11:00—Shopping with Betty and Bob
11:10—Vaudeville
11:45—Nor Ky Trio
Noon—Tri-State Philco Program
P. M.—
12:15—Violin and Piano Varieties
12:30—How It Began
12:45—Bellonby Luncheon Musicale
1:00—Story-Telling Time
1:15—Two Irish Boys
1:30—Chas. Daunt, tenor
1:45—Matinee Musicale
2:15—Moods in Blue
2:45—Reds vs. Chicago, at Redland Field
5:00—Tea Time Tunes
5:30—Tone Poems
6:00—Musical Interlude
6:30—Dinner Music
6:45—Berning Ford Travelogue
7:00—The Post Question Box
7:15—Fred Schenke Program
7:30—Harry Hartman's Sport Review

WFCB Saturday, September 5

7:45—Ruth Wolfenden, blues
8:00—Lucky Boys
8:15—Dry Ridge Health Hints
8:30—Murdock Williams
8:45—Evening Chimes
9:00—Independent Oil Stations
9:30—Song Hit Time
10:00—Dream Fantasy

WKRC (545 m.—550 kc.)

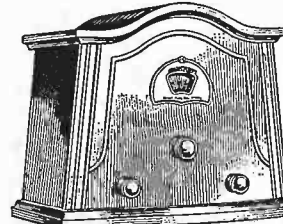
A. M.—
6:45—God's Bible School
7:45—Blue Ridge Red.
7:50—Green Time Signal
8:00—Commuters (CBS).
8:30—Tony's Scrap Book (CBS).
8:45—Morning Minstrels (CBS).
9:00—Charles W. Reaume
9:30—Consolidated Merchants.
10:00—Studio Feature.
10:15—Time: Weather
10:20—Woman's Hour—Tremlette Tully
10:45—Columbia Revue (CBS).
11:00—Julia Hayes.
11:30—Hotel Taft Orchestra (CBS)
Noon—Blackberry Dudes.
P. M.—
12:15—St. George Orchestra (CBS).
12:30—Cincinnati Merchants.
1:00—Columbia Farm Prog. (CBS).
1:30—Pyol Program.
1:45—Starr-Freeze Melodies.
2:00—Charles W. Reaume
2:15—Mil and Cassey.
2:30—A. L. Fink Song Recital, Louie Johnson, tenor
3:00—Studio.

**ROELL & QUEHL
RADIO SALON**
"Our Service Sells 'Em"
Any Make Radio Expertly Repaired
25-27 E. 6th Street
Just West of Monmouth
South 6865 NEWPORT, KY.

*Get the thrill—
of tuning-in
FOREIGN STATIONS*

DO IT IN A JIFFY
with your
present A. C. Radio Set

With this New Stewart-Warner Short Wave Converter, you can at will, "convert" your present set into a receiver for World-Wide reception—bring within range foreign stations, ships at sea, local police and amateur broadcasts. Adaptable to practically any A. C. set... Easily attached. To "convert" there's nothing to do but turn a knob! Opens a big, new field of radio thrills. Short Wave Converters are also built-in features of the new Stewart-Warner Radio.



\$23⁹⁵ Short Wave Converter
Complete with tubes
Walnut finish cabinet, 8 1/2 inches high, 8 inches deep.

Call Us For Your Nearest Dealer's Name

AUTO-RAD SUPPLY CO.
Court and Sycamore Cherry 8134

**STEWART-WARNER
Round-the-World RADIO**

WKRC Saturday, September 5
 3:15—Sarantoga Races (CBS).
 4:15—Dancing by the Sea (CBS)
 5:00—A. O. Rust—Happy Feet.
 5:15—Studio.
 5:30—Cincinnati Trade School.
 5:45—Studio.
 5:55—Eureka Baseball Scores
 5:55—Sports Review.
 5:59—Burke Weather Forecast
 6:00—St. Moritz Orchestra (CBS)
 6:30—Home Furniture Co.
 6:15—Studio.
 6:25—Stocks, Cohl and Tyree
 6:28—Time and weather
 6:30—Today in Cincinnati, by Dr. Glenn Adams
 6:45—Amel Quarter Hour (CBS)
 7:00—Fray's Crema Baud (CBS).
 7:15—Phillips Dental Prog. (CBS).
 7:30—Junior Chamber of Commerce
 8:00—Boswell Sisters (CBS).
 8:15—Studio.
 8:45—Doc Williams—"National Teachers Agency."
 9:00—Hank Simmons' Show Boat
 10:00—Frolie Program.
 10:15—Acc Brigade, at Concy Island.
 10:45—Will Osborne Orch. (CBS).
 11:00—Time; Weather; Sports
 11:08—Guy Lombardo and His Orchestra (CBS)
 11:30—Studio.
 11:45—Jos. R. Deins Organ Concert, at Gillick.
 Midnight—Jos. R. Deins Midnite Frolie, Pat Gillick.

WLW (428 m.—700 kc.)
 A. M.—
 6:30—International Fiddlers and Salt and Peanuts
 7:00—Physical Exercises
 7:15—The Sunbirds (NBC)
 7:45—Morning Devotions
 8:15—Segar Ellis
 8:30—Ward Trail Blazers (NBC)
 8:45—Physical Exercises
 9:00—Dance Miniatures (NBC)
 9:30—Book News.
 9:45—WLW Mail Bag
 10:00—Live Stock Reports
 10:10—Don Becker
 10:15—A. & P. Orchestra
 10:30—Colonel Godbody
 10:45—McCormick's Fiddlers
 11:00—Elliot Broek, violin.
 11:15—Swift Program (NBC)
 11:30—Livestock Reports.
 11:45—River Reports; Time Signals
 Noon—Governmental Glimpses, Attorney General Bettman
 P. M.—
 12:16—Hotel Gibson Orchestra
 12:45—National Farm and Home Period (NBC).
 1:30—Netherland Plaza Orchestra.
 2:00—Arthur Chandler, Jr., organ
 2:30—Cincinnati Zoo Symphony
 3:00—Jim and Walt
 3:15—Pacific Feature Hour (NBC)
 4:00—A. & P. Orchestra
 4:30—Crosley Dealers' Hour
 5:00—Seketary Hawkins
 5:30—Doctors of Melody
 5:40—O. M. L. Talk.
 5:45—Lowell Thomas (NBC)
 6:00—Amos 'n' Andy (NBC)
 6:15—Tastyest Jestes (NBC)
 6:30—The Brownie Bar Program
 6:45—The Chatter
 7:00—Los Ramos Baseball Scores
 7:03—R. F. D. Hour
 7:30—Dorsay Program (NBC)
 8:00—Crosley Saturday Knights.
 8:30—Domino Orchestra (NBC)
 9:00—King Edward Cigar Band.
 9:30—Clara, Lu and Em (NBC)
 9:45—Castle Farm Orchestra
 10:00—Encores
 10:30—Variety
 10:45—Bob Newhall Sport Slices
 10:58—Estate Weather Man.
 11:00—The Singing Violin
 11:30—Doodlesocks.
 Midnight—Hotel Gibson Orchestra
 12:30—Castle Farm Orchestra.
 1:00—Hotel Gibson Orchestra
 1:30—Castle Farm Orchestra

WSAI (225 m.—1330 kc.)
 A. M.—
 8:00—Gene and Glenn (NBC)
 8:15—Records.
 8:45—A. & P. Program (NBC).

WSAI Saturday, September 5
 9:00—Mrs. Blake's Radio Column (NBC)
 9:15—Hits and Bits (NBC).
 10:15—McCormick's Fiddlers.
 10:30—Keys to Happiness (NBC)
 11:00—Records
 11:30—Live Stock Reports.
 11:45—Records
 Noon—Sign off
 P. M.—
 3:00—Classic Gems (NBC)
 3:30—Records
 3:45—Crosley Dealers Salute
 4:00—Records
 5:00—Southern Singers & Mitchem
 5:30—Records.
 6:00—Harry Wilsey's Orchestra
 6:30—Records
 6:45—The Goldbergs (NBC)
 7:00—Records
 7:15—Harry Wilsey's Orchestra.
 7:30—The Silver Flute (NBC)
 8:00—General Electric Hour (NBC)
 8:30—Club Valspar (NBC)
 9:00—Lucky Strike Dance (NBC)
 10:00—Hotel Gibson.
 10:30—Castle Farm Orchestra.
 11:00—Sign off

**SUNDAY
September 6**

WKCY (202 m.—1490 kc.)
 A. M.—
 10:00—Nomads (NBC).
 10:30—Jewels of Destiny (NBC).
 11:00—The Crooning Guitarist.
 11:15—Bob Sidell and Davc Young.
 11:30—Skillet Lickers.
 Noon—Charlene and Tommy.
 P. M.—
 12:15—Cosmopolitan Chorus.
 12:45—Hot Shot, the Briarhopper.
 1:00—Sign off.
 1:45—Lucille Fox, Blues.
 6:00—Lee County Ramblers.
 6:15—Russel Hodges, Bass.
 6:30—Italian Serenaders.
 6:45—Little Red Riding Hood.
 7:00—Skillet Lickers.
 7:30—College of Music.
 8:00—Lawson's Hawaiians.
 8:30—Earl Arnold's Orchestra from Lookout House.
 9:00—Hot Shot, the Briarhopper.
 9:15—Randall Fryer, Tenor.
 9:30—Earl Arnold's Orchestra.

WFBE (250 m.—1200 kc.)
 A. M.—
 8:00—Morning Frolie.
 8:30—Concert Hour.
 9:30—Invitation to the Waltz.
 10:15—Dry Ridge Health Hints.
 10:30—Vocal Varieties.
 10:45—Bering Ford Travelogue.
 11:00—Excerpts from the Operas.
 11:30—Novelty Notes.
 11:45—Echoes from Germany.
 P. M.—
 12:15—Kleeman Furniture program.
 12:30—Galvano & Cortez.
 12:45—Ralph Witherby, vocal solos.
 1:00—Jewish Hour.

**Club Valspar's
Soloist Found
Radio Road Easy**



Twenty-four hours after Aileen Clark sang for NBC's program board, she was signed as an NBC artist and acclaimed by her sponsor as "radio's nightingale." Now she sings with other guest stars on the Club Valspar Variety program broadcast on the network (and WSAI) every Saturday at 8:30 p. m. She was trained as an operatic soprano, but rumor has it that when she finished her first popular songs before the microphone, 300 enthusiastic radio listeners called the NBC studios in New York to compliment her.

WFBE Sunday, September 6
 1:30—Jubilee Singers.
 1:45—Dance Melodies.
 2:15—Ralph and Harlan.
 2:30—Matinee Musicale.
 3:00—Afternoon Recital.
 3:15—Moods in Blue.
 3:45—Strike Up the Band.
 4:15—Pastels in Prose.
 4:30—Variety.
 4:45—Post Symphony Hour
 5:45—Tea Time Tunes
 6:00—Lee Richards.
 6:15—Musical Interlude.
 6:30—Church Federation Hour.
 7:00—Anne Storey, Contralto.
 7:15—With the Scouts.
 7:30—Harry Hartman's Sport Review.
 7:45—Old Time Fights — Harry Hartman, Announcer.
 9:00—Scotland Yard
 9:30—Sunday Serenader.
 9:45—Dream Fantasy.

WKRC (545 m.—550 kc.)
 A. M.—
 6:45-7:45—God's Bible School—Sunrise Worship.
 9:00—God's Bible School.
 10:00—Watchtower Program (e. t.).
 10:15—Jim Lightfield—Veteran's Civic Hour.
 11:00—First Church of Christ, Scientist.
 11:50—Green Time Signal
 Noon—American Legion Program.
 P. M.—
 1:00—Jewish Community Program.
 1:30—Gypsy Trial (CBS).
 2:00—Symphonic Hour with Toscha Seidel (CBS).
 3:00—Cathedral Hour (CBS)
 4:00—Annual Labor Service, National Cathedral (CBS).
 4:30—Allerton Cite Club (CBS).
 5:00—Chic Knights (CBS).
 5:30—Twilight Reveries.
 5:58—Burke Weather Forecast.
 6:00—Theo. Karic (CBS).
 6:15—Studio.
 6:20—Eureka Baseball Scores.
 6:25—Sports Review.
 6:30—Daddy and Rollo (CBS).
 6:45—The Boswell Sisters (CBS).
 6:58—Time and weather.
 7:00—Devils, Drugs and Doctors (CBS).
 7:15—Kate Smith (CBS).
 7:30—Tony Parenti and His Singing Saxophone (CBS).
 7:45—Angelo Patri—"Your Child"
 8:00—The Dutch Masters (CBS).
 8:30—Around the Samovar (CBS).
 9:00—Manhattan Serenaders (CBS).
 9:30—The Gauchos (CBS).
 10:00—Continental String Quartet
 10:30—Red Nichols Orchestra (CBS).
 11:00—Time and weather.
 11:05—Sports Review.
 11:08—Jack Miles Orchestra (CBS).
 11:30—Nocturne (CBS).

WLW (428 m.—700 kc.)
 A. M.—
 8:50—Time.
 9:00—Church Forum.
 9:30—Fiddlers Three (NBC).
 9:45—Song for Today (NBC).
 10:05—Organ, Arthur Chandler, Jr.
 10:25—River Reports.
 10:30—Morning Musical (NBC).
 11:30—Troika Bells (NBC).
 Noon—Tales of Emerald Isle (NBC).
 P. M.—
 12:30—Melody Interlude (NBC).
 1:30—Yeast Foamers (NBC).
 2:00—Matinee Jewels.
 2:30—Henry Thies' Orchestra.
 3:00—To be announced
 3:30—Island Serenaders.
 4:00—Sabbath Reveries (NBC).
 5:00—The Roamios.
 5:30—Plantation Days.
 6:00—Glenn Sisters and Ramona.
 6:15—The Chatter.
 6:30—College of Music Recital.
 6:55—Los Ramos Baseball Scores.
 7:00—Enna Jettick Melodies (NBC).

RADIO TUBE SPECIALISTS
 Any Type of Tube for Any
 Kind of Radio
LINK'S TUBE SHOP
 607 WALNUT STREET
 RADIO REPAIRING Parkway 6415

WLW Sunday, September 6
 7:15—Hotel Gibson Orchestra.
 7:30—Harbor Lights (NBC).
 8:00—Heel Hugger Harmonies (NBC).
 8:15—Bayuk Stag Party (NBC).
 8:45—Kellogg Slumber Music
 9:15—Variety.
 9:30—Castle Farm Orchestra.
 10:02—Crosley Concert.
 10:45—Variety Quartet.
 11:00—Estate Weather Man.
 11:00—Henry Thies Orchestra (to NBC).
 Midnight—Castle Farm Orchestra.

WSAI (225 m.—1330 kc.)
 P. M.—
 2:00—Sermonette and Hymn Time.
 2:30—Balkan Mountain Men (NBC).
 3:00—National Sunday Forum
 4:00—Disc Jubilee (NBC).
 5:00—Catholic Services (NBC).
 6:00—Russian Singers (NBC).
 6:30—Jodett Club (NBC).
 7:00—Chase and Sanborn (NBC).
 8:00—"Our Government," David Lawrence (NBC).
 8:15—Castle Farm Orchestra.
 8:45—Through the Opera Glass.
 9:15—Best Sellers (NBC).
 9:45—Sunday Night at Seth Parker's (NBC).

**MONDAY
September 7**

WKCY (202 m.—1490 kc.)
 A. M.—
 7:00—The Crooning Guitarist.
 7:15—Morning Devotions (NBC).



\$79.50 with tubes
Radio's Newest Achievement!

Beautiful Standard and Custom Built Models
 Now Being Shown
THE ANNUAL RADIO SHOW
 at
 Coney Island and the
GENERAL MOTORS RADIO EXHIBIT
 637 WALNUT STREET

GENERAL MOTORS RADIO
 the Improved Super-Heterodyne

NINE NEW MODELS!
 17 great features
 for
1932
ATWATER KENT RADIO

Republican Radio Talks

Presentation of Candidates' Platform, Over

WKRC, Sept. 8, at 9:30 P. M.
WFBE, Sept. 9, at 7:45 P. M.

OTHER TALKS:
 WFBE: Sept. 7, 7:45 P. M.
 WKRC: Sept. 11, 6:30 P. M.
 WFBE: Sept. 11, 7:45 P. M.

WLW Tuesday, September 8
 1:30—Netherland Plaza Orchestra.
 2:00—Organ Matinee—A. Chandler, Jr.
 2:30—Chicago Serenade (NBC).
 2:45—Princess Obleynsky (NBC).
 3:00—Salt and Peanuts.
 3:15—Waltzing (NBC).
 3:30—Maze of Melody (NBC).
 4:00—A. & P. Orchestra.
 4:30—Live Stock Reports.
 4:40—Grab Bag Boys.
 5:00—The Hotshots.
 5:25—O. M. I. Talk.
 5:30—Old Man Sunshine.
 5:45—Lowell Thomas (NBC).
 6:00—Amos 'n' Andy (NBC).
 6:15—The Chatter.
 6:30—Brownie Bar Program.
 6:45—Mail Pouch (c. t.).
 7:00—Armstrong Quakers (NBC).
 7:30—Los Ramos Baseball Scores.
 7:35—Netherland Plaza Orchestra.
 7:45—Sisters of the Skillet (NBC).
 8:00—State of Maine Program.
 8:15—Icecast Jamboree.
 8:30—Werk Bubble Blowers.
 9:00—Crimelights.
 9:25—Around the World with Jeff Davis.
 9:30—Chevrolet Chronicles (c. t.).
 10:00—Cotton Queen Minstrels.
 10:30—Variety.
 10:45—Bob Newhall, Sport Slices.
 10:58—Estate Weather.
 11:00—Los Angeles Fiesta (NBC).
 Midnight—Hotel Gibson Orchestra.
 12:30—Castle Farm Orchestra.

WSAI (225 m.—1330 kc.)

A. M.—
 8:00—Gene and Glenn (NBC).
 8:15—Records.
 8:45—A. & P. Program (NBC).
 9:00—Mrs. Blake's Radio Column.
 9:15—Records.
 10:00—Dr. Ella Oppenheimer (NBC).
 10:15—Radio Household Institute (NBC).
 10:30—McCormick's Fiddlers.
 11:00—Hellman Troubadours (NBC).
 11:15—Sign Off.
 P. M.—
 12:50—Live Stock Reports.
 1:00—Sign off.
 2:00—Women's Radio Review (NBC).
 3:00—Records.
 3:45—Crosley Dealers' Salute.
 4:00—Lucky Next Door (NBC).
 4:30—Ringo Talkie (NBC).
 4:45—Records.
 5:15—Vocal Solos.
 5:30—Records.
 6:00—Midweek Hymn Sing (NBC).
 6:30—Corner Drug Store (NBC).
 6:45—The Goldbergs (NBC).
 7:00—Blackstone Plantation (NBC).
 7:30—Nat. Dairy Wineso (NBC).
 8:00—Hotel Gibson Orchestra.
 8:30—Fuller Brush Man (NBC).
 9:00—Lucky Strike Dance (NBC).
 10:00—Castle Farm Orchestra.
 10:15—The Stehbins Boys (NBC).
 10:30—Hotel Gibson Orchestra.
 11:00—Sign Off.

Mary Lawler Will Be Nestle Guest



Mary Lawler will repeat in the Nestle Chocolateers' program Friday night (September 4) at 7:00 p. m. the songs she made famous before the footlights in "Good News," "You Said It," "Follow Thru," and "Cross My Heart." WCKY will carry the feature.

Soon the piquant Miss Lawler (in private life the wife of Lynn Larry of the New York Yankees) is to desert Broadway for Hollywood where she will be featured in the film version of "Babes in Toyland."

WCKY Wednesday, September 9

P. M.—
 12:15—Little Red Riding Hood, John R. Coppin Co.
 12:30—Live Stock Reports.
 12:35—Lunch Music.
 1:00—Sign off.
 5:45—Dance Records.
 6:00—Amos 'n' Andy (NBC).
 6:15—Charlene and Tommy.
 6:30—Charming Guitarist.
 6:45—Tommie and Willie.
 7:15—Italian Serenaders.
 7:30—Lawson's Hawaiians.
 8:00—Hitch Hikers.
 8:15—Little Red Riding Hood.
 8:30—Earl Arnold's Orchestra, Look-n' House.
 9:00—Lucille Fox, Blues Singers.
 9:15—Steve Bates, with Octofone.
 9:30—Skillet Lickers.

WFBE (250 m.—1200 kc.)

A. M.—
 7:00—Bamboo Boys.
 7:30—Morning Frolic.
 8:00—Concert Hour.
 9:00—Lec Richards.
 9:15—Sunshine Special.
 9:45—Kleeman Home Chats.
 10:00—Musical Brevities.
 10:35—Vocal Varieties.
 10:50—Mrs. Evans' Questions and Answers.

11:00—Shopping with Betty and Bob.
 11:30—Melodies of Long Ago.
 11:45—Norky Trio.
 Noon—Tri-State Philco Program.

EXPERT RADIO REPAIRS
 Reasonable Charges
 Call MEIrose 2170
RADIO TUBE CENTER
 Open Evenings

WFBE Wednesday, September 9

12:15—Violin and Piano Varieties.
 12:30—How It Began.
 12:45—Bellouby Luncheon Musicale.
 1:00—Story Telling Time.
 1:15—Little Black Joe.
 1:30—Organ Recital.
 2:00—Clubs Daunt, tenor.
 2:15—Moods in Blue.
 2:45—Matinee Musicale.
 3:15—Strike Up the Band.
 3:45—Hot Rhythm.
 4:15—Memory Lane.
 4:45—Variety.
 5:00—Tea Time Times.
 5:30—Galas and Cortez.
 5:45—Musical Interlude.
 6:15—Jubilee Singers.
 6:30—Dinner Music.
 6:45—Berming Ford Travlogue.
 7:00—The Pest Question Box.
 7:15—Fred Schenke Program.
 7:30—Harry Hartman's Sport Review.
 7:45—Republican Campaign Committee.
 8:00—Lucky Boys.
 8:15—Dry Ridge Health Hipts.
 8:30—Julius Sein.
 8:45—Song Hit Time.
 9:15—Evening Chimes.
 9:45—Mountain Red.
 10:00—Dream Fantasy.

WKRC (545 m.—550 kc.)

A. M.—
 6:45—Sunrise Worship.
 7:15—Blue Ridge Red.
 7:58—Green Time.
 8:00—The Commuters (CBS).
 8:30—Tony Scrap Book (CBS).
 8:45—The Old Dutch Girl (CBS).
 9:00—Oxol Feature (CBS).
 9:15—Morning Minstrels (CBS).
 9:30—Consolidated Merchants.
 10:00—Learn to Swim (CBS).
 10:15—Florinalc Talk.
 10:30—Time and weather.
 10:25—Woman's Hour, Tremette Tulley.
 10:45—Julia Hayes.
 11:15—Charles W. Reaume.
 11:30—Columbia Revue (CBS).
 11:45—Janc Gray and "Kampf the Jeweller" Artists.
 Noon—Blackberry Dudes.

P. M.—
 12:15—Enric Madruguera's Orchestra (CBS).
 12:30—Cincinnati Merchants.
 1:00—Pres. Hoover's Speech (CBS).
 1:15—Art Fry Cleaners.
 1:30—Pyol Program.
 1:45—Blue Ridge Red.
 2:00—Charles W. Reaume.
 2:15—Burek-Bauer Program.
 2:30—The Three Doctors (CBS).
 2:45—Dancing by the Sea.
 3:15—Starr-Freeze Melodies.
 3:30—Artists Recital (CBS).
 4:00—Asbury Park Orch. (CBS).
 4:15—(A. L. Fink Program)—Dan De King, Vagabond.
 4:45—Edna Wallace Hopper's Youth Matinee (CBS).
 5:00—A. O. Rust, Happy Feet.
 5:15—Mabley & Carew.
 5:30—Cincinnati Trade School.
 5:45—Studio.
 5:50—Eureka Baseball Scores.
 5:55—Sports Review.
 5:58—Burke Weather Forecast.
 6:00—Kate Smith Swanne Music Home Furniture Co. (CBS).
 6:10—Stocks, Cohle & Tyre.

JANE GREY
 and
The Kampf Artists
 Mon., Wed., Fri.
11:45 A.M.
 Sponsored by
The A. W. Kampf Jewelry Co.
 Diamond Remounting Specialists
 18 West Sixth St.

WKRC Wednesday, September 9

6:13—Time and weather.
 6:15—Limit Program, with Kennis King (CBS).
 6:30—Today in Cincinnati, by Dr. Glenn Adams.
 6:45—Camel Quarter-Hour (CBS).
 7:00—Pryor's Crmo Band (CBS).
 7:15—Barbasol Program (CBS).
 7:30—Kaltenborn Edits the News (CBS).
 7:45—Old Wurzburg Malt Program.
 8:00—Gold Medal Fast Freight (CBS).
 8:30—Eno Crime Club (CBS).
 8:00—Vitality Personalities (CBS).
 9:15—Fernandez Brothers (CBS).
 9:30—French-Bauer — Nit-Wits (CBS).
 10:00—Bing Crosby (CBS).
 10:15—Gruen Answer Man (E. T.).
 10:30—Studio.
 10:30—Pyol Program.
 10:45—Will Osborne Orch. (CBS).
 11:00—Time; Weather; Sports.
 11:08—Jack Miles Orch. (CBS).
 11:30—Studio.
 11:45—Jos. R. Deins Organ Concert, Pat Gillick.

WLW (428 m.—700 kc.)

A. M.—
 6:30—Time Announcement.
 6:31—International Fiddlers and Jim and Walt.
 6:58—Weather Forecast.
 7:00—Physical Exercises.
 7:14—Time Announcement.
 7:15—The Sunbirds (NBC).
 7:45—Morning Devotions.
 8:15—Ball Brothers Canning Time.
 8:30—Montgomery Ward Program.
 8:45—Physical Exercises.
 9:00—Mary Hale Martin (NBC).
 9:15—Florence Frey's Workshop.
 9:30—Dance Miniatures (NBC).
 9:45—Marley Perfumes (NBC).
 10:00—Live Stock Reports.
 10:10—Don Becker.
 10:15—A. & P. Orchestra.
 10:30—Colonel Goodbody.
 10:45—Manhattan Soap (NBC).
 11:00—Moto Ironing—Ford Rush.
 11:15—Swift Program (NBC).
 11:30—WLW Stars.
 11:45—River Reports; Time Signals.
 Noon—The Village Rhythmer.
 P. M.—
 12:15—Hotel Gibson Orchestra.
 12:30—President Hoover talk (NBC).
 1:30—Netherland Plaza Orchestra.
 2:00—Arthur Chandler, Jr., organ.
 2:30—Cincinnati Zoo Concert.
 3:00—Weather Forecast.
 3:01—The Matinee Players.
 3:45—Georgian Strollers and Robert West.
 4:00—A. & P. Orchestra.
 4:30—Live Stock Reports.
 4:40—Grab Bag Boys.
 5:00—Afternoon Melodies.
 5:30—Old Man Sunshine.

WLW Wednesday, September 9

5:45—Lowell Thomas (NBC).
 6:00—Amos 'n' Andy (NBC).
 6:15—The Chatter.
 6:30—Phil Cook (NBC).
 6:45—"Believe It or Not," Ripley (NBC).
 7:00—Los Ramos Baseball Scores.
 7:05—Hotel Gibson Orchestra.
 7:15—John Ruskin Program.
 7:30—Jack Hot Melodies (NBC).
 8:00—Crosley Follies.
 8:30—Dust Masters Minstrels.
 9:00—Theatrical Scrapbook (NBC).
 9:30—Canova Coffee Hour.
 10:00—Greystone Ballroom, Duke & Ellington.
 10:30—Variety.
 10:45—Bob Newhall, Sport Slices.
 10:58—Estate Weather Man.
 11:00—Hotel Gibson Orchestra.
 11:30—Moon River.
 Midnight—Hotel Gibson Orchestra.
 12:30—Castle Farm.
 1:00—Sign off.

WSAI (225 m.—1330 kc.)

A. M.—
 8:00—Gene and Glenn (NBC).
 8:15—Records.
 8:45—A. & P. Program (NBC).
 9:00—Mrs. Blake's Radio Column (NBC).
 9:15—Jane Grant (NBC).
 9:30—National Home Hour (NBC).
 10:00—Records.
 10:15—Radio Household Institute (NBC).
 10:30—Records.
 11:00—Hellman Troubadours (NBC).
 11:15—Sign Off.
 P. M.—
 12:50—Live Stock Reports.

A Laugh A Second
 with
HYRYE
 AND
Willie Winsum
 Every Tues., 7:45 p. m., and every Thurs., 7:30 p. m.
WKRC
 Radio's biggest 15 minutes of good cheer and snappy music.
 Sponsored by
THE RUBEL BAKING CO.

WENITH
AUTOMATIC
RADIO
 —LONG DISTANCE—
This Year's Leader
 7-8-10-14 TUBES
\$49.95 up to \$290.00
THE HARTEN-KNODEL DISTRIBUTING CO.
 N. W. Cor. 8th and Sycamore Sts.

WEDNESDAY
 September 9

WCKY (202 m.—1490 kc.)

A. M.—
 7:00—The Grooming Guitarist.
 7:15—Morning Devotions (NBC).
 7:30—Cheerio (NBC).
 8:00—Hot Shot, the Briarhopper.
 8:15—Early Morning Dance Program.
 9:15—Light Concert Music.
 9:45—Dance Times.
 10:15—Classic Hour.
 10:45—Musical Novelties.
 11:30—Skillet Lickers.
 Noon—Popular Dance Melodies.

SPRAY SHIELD TUBES
EXCLUSIVE MAJESTIC FEATURES
TWIN POWER DETECTION
NEW FALL MODELS ON DISPLAY AT RADIO SHOW CONEY ISLAND
Majestic
 DISTRIBUTED BY
SCHUSTER ELECTRIC COMPANY

WSAI Wednesday, September 9
 1:00—Sign off.
 2:00—Woman's Radio Review (NBC).
 3:00—Records.
 3:45—Crosley Dealers' Salute
 4:00—Don Becker.
 4:15—Sam Wilson, baritone.
 4:30—Poems by Harry Holcombe.
 4:45—Records.
 5:00—McCormick Fiddlers.
 5:25—Civil Service Talk.
 5:30—Records.
 6:15—Madame Alda (NBC).
 6:30—Records.
 6:45—The Goldbergs (NBC).
 7:00—Records.
 7:30—Mobioli Concert (NBC).
 8:00—Halsey Stuart (NBC).
 8:30—Palmolive Hour (NBC).
 9:30—Coca Cola Program (NBC).
 10:00—Jim and Walt.
 10:15—The Stebbins Boys (NBC).
 10:30—Vincent Lopez Orch. (NBC).

**THURSDAY
September 10**

WCKY (202 m.—1490 kc.)
 A. M.—
 7:00—The Crooning Guitarist.
 7:15—Morning Devotions (NBC).
 7:30—Cheerio (NBC).
 8:00—Hot Shot, the Briarhopper.
 8:15—Early Morning Dance.
 8:30—Light Concert Music.
 9:45—Dance Tunes.
 10:00—Mrs. A. M. Goudiss (NBC).
 10:15—Dance Records.
 10:30—Northam-Warren (NBC).
 10:45—Classic Hour.
 11:00—Musical Novelties.
 11:30—Skillet Lickers.
 Noon—Popular Dance Tunes.
 P. M.—
 12:16—Little Red Riding Hood, John R. Copping Co.
 12:30—Live Stock Quotations.
 12:35—Luncheon Music.
 12:45—Rev. Chas. A. Vandermuelen.
 1:00—Sign off.
 1:45—Dance Music.
 6:00—Amos 'n' Andy (NBC).
 6:15—Tasteeast Jesters (NBC).
 6:30—Tommy and Willie.
 7:15—Fisher Covington.
 7:00—Dixie Spiritual Singers (NBC).
 7:30—Crooning Guitarist.
 7:45—Little Red Riding Hood.
 8:00—Blackstone Plantation (NBC).
 8:30—Louise Ryder, Contralto.
 8:45—Hitchhikers.
 9:00—Earl Arnold and His Orchestra from Lookout House.
 9:30—Skillet Lickers.

WFBZ (250 m.—1200 kc.)
 A. M.—
 7:00—Morning Frolic.
 8:00—Concert Hour.
 9:00—Tennessee Jeff.
 9:15—Sunshine Special.
 9:45—Kleeman Home Chats.
 10:00—Musical Brevities.
 10:50—Sister Mary's Kitchen.
 11:00—Shopping with Betty and Bob.
 11:30—Vocal Variety.
 11:45—Nokky Trio.
 Noon—Tri-State Philco Program.
 P. M.—
 12:15—Violini and Piano Varieties.
 12:45—Bellonby Luncheon Musicale.
 12:30—How It Began.
 1:00—Story Telling Time.
 1:15—20 Irish Boys
 1:30—Matinee Musicale.
 2:00—Melody Girl.
 2:15—Ralph and Harlan.
 2:30—Afternoon Dance Frolic.
 2:45—Reds vs. Brooklyn, at Redland Field.
 3:00—Serenade.
 5:30—Tea Time Tunes.
 6:00—Musical Interlude.
 6:30—Dinner Music.

**We Are Looking For Trouble
IN YOUR RADIO**
 Superior Service at Reasonable Rates by
 Electrical Engineers
 Super Radio Service Co.
 James Frenkel Leon Bass
 AVon 3095

Irene Bordoni to Return to Mike From Trip Abroad



New songs she is bringing from the Parisian boulevards and the music halls of Europe will freshen American ether waves when vivacious Irene Bordoni steps from the gangplank of a European liner to the microphone as guest artist on the Chase and Sanborn program Sunday night (September 6) at 7 o'clock on WSAI and an NBC network.
 Miss Bordoni does not arrive from abroad in time to announce the titles of her songs for this program in advance, but her sponsors have been assured that the melodies will epitomize piquant Gallic audacity.

WFBZ Thursday, September 10
 6:45—Berning Ford Travelogue.
 7:00—The Post Question Box.
 7:15—Fred Schenke Program.
 7:30—Harry Hartman's Sport Review.
 7:45—Ruth Wolfenden, Blues.
 8:00—Lucky Boys.
 8:15—Dried Ridge Health Hints.
 8:30—Murdock Williams.
 8:45—The Post Tenor.
 9:00—Independent Oil Program.
 9:30—Log Cabin Boys.
 10:00—Dream Fantasy.

WKRC (545 m.—550 kc.)
 A. M.—
 6:45—Sunrise Worship.
 7:45—Blue Ridge Red.
 7:50—Green Time Signal.
 8:00—The Commuters (CSB).
 8:30—Tony's Scrap Book (CBS).
 8:45—Star-Freeze Melodies (E. T.)
 9:00—Dr. Royal Copeland—Ceresota Flour Program (CBS).
 9:15—Consolidated Merchants.
 9:45—Barbara Gould Beauty Talk (CBS).
 10:00—Charles W. Reaume.
 10:30—Vacation Roads.
 10:45—Time and weather.
 10:48—Woman's Hour, Tremlette Tully.
 11:15—Don Bigelow Orch. (CBS).
 11:30—Columbia Revue (CBS).
 Noon—Blackberry Dudes.

If You Need Money



For insurance, repairs, old bills or any other purpose, we have a Household Loan Plan whereby you can borrow what you need and repay it in small monthly amounts arranged conveniently for you. You have a year or more in which to pay it.
 Let C. A. C. help you solve your money problems. Open 8:30 to 5:00.

The Central Acceptance Corporation

26 East Sixth St., Between Vine and Walnut, Cincinnati, Ohio PARKway 6280

WKRC Thursday, September 10
 P. M.—
 12:15—Enric Madriguera's Orchestra (CBS).
 12:30—Cincinnati Merchants.
 1:00—Studio.
 1:15—Julia Hayes.
 1:45—Pyol Program.
 2:00—Charles W. Reaume Studio.
 2:15—Mel and Cassey.
 2:30—(A. L. Fink)—The Three Doctors (CBS).
 2:45—(A. L. Fink)—Don De King.
 3:00—Melody Mags (CBS).
 3:30—Hotel Talk Orchestra (CBS).
 4:00—Asbury Park Orch. (CBS).
 4:30—Kathryn Parsons (CBS).
 4:45—Meet the Artist (CBS).
 5:00—A. O. Rust, Happy Feet.
 5:15—Mable & Carew.
 5:30—Cincinnati Trade School.
 5:45—Studio.
 5:50—Eureka Baseball Scores.
 5:55—Sports Review.
 5:59—Burke Weather Forecast.
 6:00—Kate Smith (CBS)—Home Furniture Co.
 6:10—Stocks, Cohlé & Tyree.
 6:13—Time and weather.
 6:15—Limit Program, with Dennis King (CBS).
 6:30—Daddy and Rollo (CBS).
 6:45—Carnel Quarter-Hour (CBS).
 7:00—Pryor's Crema Band (CBS).
 7:15—Sterling Products (CBS).
 7:30—Rubel's—Hy Rye and Willie Winsom.
 7:45—Old Wurtzburg Malt.
 8:00—Premier Salad Dressers (CBS).
 8:15—The Coty Melody Girl (CBS).
 8:30—Today in Cincinnati, by Dr. Glenn Adams.
 8:45—Grand Opera Miniature (CBS).
 9:00—Boswell Sisters (CBS).
 9:15—The Columbian (CBS).
 9:30—Tito Guizar (CBS).
 9:45—Peter Paraz (CBS).
 10:00—Pyol Program.
 10:15—Studio.
 10:45—Radio Roundup (CBS).
 11:00—Time and Weather.
 11:03—Sports Review.
 11:15—Guy Lombardo Orchestra.
 11:30—Studio.
 11:45—Jos. R. Deins Organ Concert, Pat Gillick.

WLW (428 m.—700 kc.)
 A. M.—
 6:30—Time Announcement.
 6:31—International Fiddlers and Ford Rush
 6:50—Weather Forecast.
 7:00—Physical Exercises.
 7:14—Time Announcement.
 7:15—The Sunbirds (NBC).
 7:45—Morning Devotions.
 8:15—Ford Rush
 8:30—Ward Trail Blazers (NBC).
 8:45—Physical Exercises.
 9:00—Ray Perkins (NBC).
 9:15—Beatrice Mable (NBC).
 9:30—Dr. Carl Wilzbach.

**FLORENCE FREY
BEAUTY EXPERT**



on the air
 Every Wednesday
 9:15 A. M. WLW

PERMANENT WAVE \$5.00
 Positively Harmless—Painless—Quick
FLORENCE FREY STUDIO
 631 Walnut Street Cherry 605

WLW Thursday, September 10
 9:45—Housekeeper Chats.
 10:00—Live Stock Reports.
 10:10—Don Becker.
 10:15—A. & P. Orchestra.
 10:30—Colonel Goodbody.
 10:45—Jim and Walt.
 11:00—The Venetian Three.
 11:15—Swift Program (NBC).
 11:30—WLW Stars.
 11:45—River Reports; Time Signals.
 Noon—Ramona.
 P. M.—
 12:16—Hotel Gibson Orchestra.
 12:45—Market Reports.
 12:50—Live Stock Reports.
 1:00—Farm and Home (NBC).
 1:30—Netherlands Plaza Orchestra.
 2:00—Arthur Chandler, Jr., organ.
 2:30—Chicago Serenade (NBC).
 2:45—Princess Ovolensky (NBC).
 3:00—Interviews by Alice Cory (et.).
 3:15—Afternoon Melodies.
 3:30—Maze of Melody (NBC).
 4:00—A. & P. Orchestra.
 4:30—Live Stock Reports.
 4:40—Grab Bag Boys.
 4:55—O. M. I. Talk.
 5:00—Edna Wallace Hopper (NBC).
 5:15—Wilderson's Wildcats.
 5:30—Old Man Sunshine.
 5:45—Lowell Thomas (NBC).
 6:00—Amos 'n' Andy (NBC).
 6:15—Tasteeast Jesters (NBC).
 6:30—Glenn Adams, Dog Talks.
 6:45—News from Hollywood (E. T.).
 7:00—Los Ramos Baseball Scores.
 7:03—The Chatter.
 7:15—Kin-Tin-Tin Thriller (NBC).
 7:30—Netherlands Plaza Orchestra.
 7:45—Sisters of the Skillet (NBC).
 8:00—State of Maine Drama.
 8:15—Natural Bridge Shoes (e. t.).
 8:30—Castilian Nights.
 9:00—A. & P. Orchestra.
 9:30—Clara, Lou and Em (NBC).
 9:45—Varsity Four.
 10:00—Canada Dry Program.
 10:30—Variety.
 10:45—Bob Newhall, Sport Slices.
 10:58—Estate Weather Man.

WLW Thursday, September 10
 11:00—Great Composers.
 11:30—Moon River.
 Midnight—Hotel Gibson Orchestra.
 12:30—Castle Farm Orchestra.
WSAI (225 m.—1330 kc.)
 A. M.—
 8:00—Gene and Glenn (NBC).
 8:15—Records.
 8:45—A. & P. Program (NBC).
 9:00—Mrs. Blake's Radio Column (NBC).
 9:15—McCormick Fiddlers.
 9:30—Records.
 9:45—Organ Program.
 10:00—Records.
 10:15—Radio Household Institute (NBC).
 10:30—Records.
 11:00—Hellman's Troubadours (NBC).
 11:15—Sign Off.
 P. M.—
 12:50—Live Stock Reports.
 1:00—Sign off.
 2:00—Woman's Radio Review (NBC).
 3:00—Records.
 3:45—Crosley Dealers' Salute.
 4:00—Mona Motor Organ Recital.
 4:30—Rinsio Talkie (NBC).
 4:45—Records.
 5:00—Travel Talk by Jos. Rios.
 5:15—Vocal Solos.
 5:30—Records.
 6:00—Harry Wilsey's Orchestra.
 6:25—Bette Business Bureau Talk.
 6:30—Records.
 6:45—The Goldbergs (NBC).
 7:00—Fleischmann Hour (NBC).
 8:00—Arco Birthday Party (NBC).
 8:30—Willard Robinson and His Deep River Orchestra (NBC).
 9:00—Lucky Strike Orch. (NBC).
 9:00—Casa Loma Orchestra, Castle Farm.
 10:15—The Stebbins Boys (NBC).
 10:30—Gibson Hotel Orchestra.

PHILCO
 Model 50
BABY GRAND
\$36.50
 COMPLETE WITH TUBES

The World's Largest Selling Radio

THE 11-TUBE LOW BOY

\$149.50

SEE THE COMPLETE DISPLAY AT THE RADIO SHOW.

EASY TERMS AT YOUR PHILCO DEALER

THE TRI-STATE IGNITION CORP. DISTRIBUTORS
 212 East 8th St. Parkway 7400